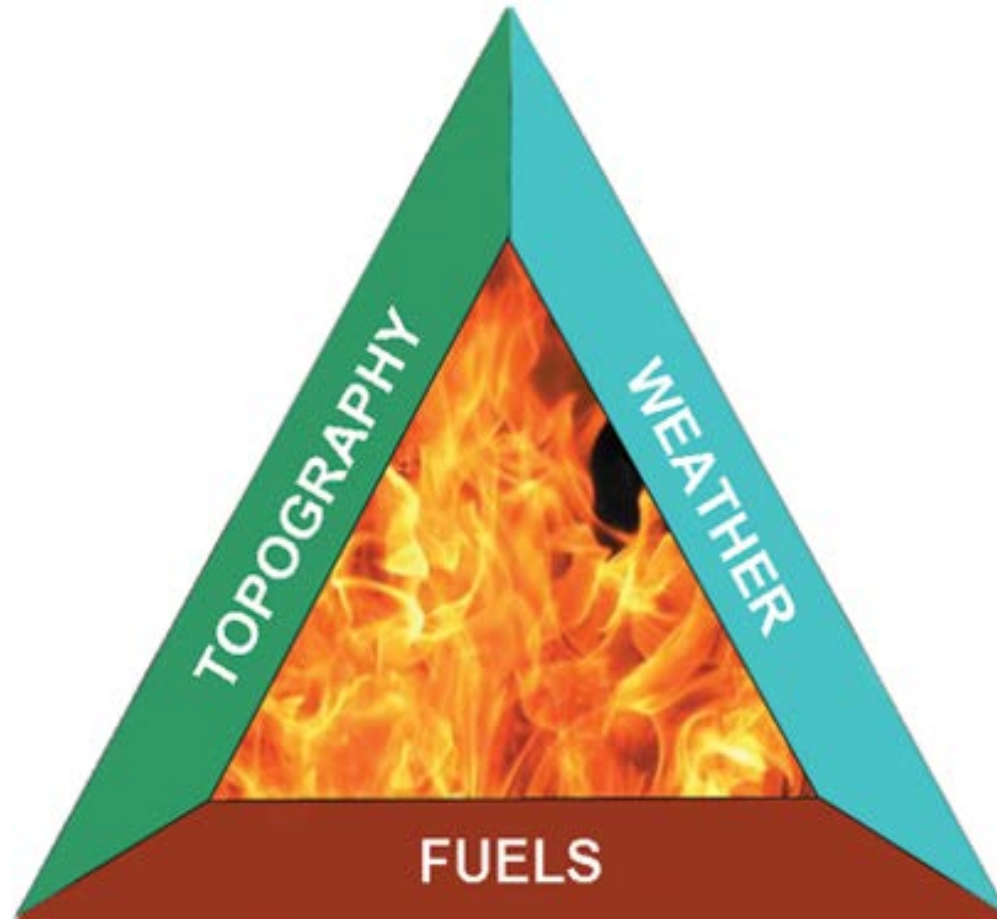


# Environmental Factors Influencing Wildland Fire



# Fuel Types



BEFORE



AFTER

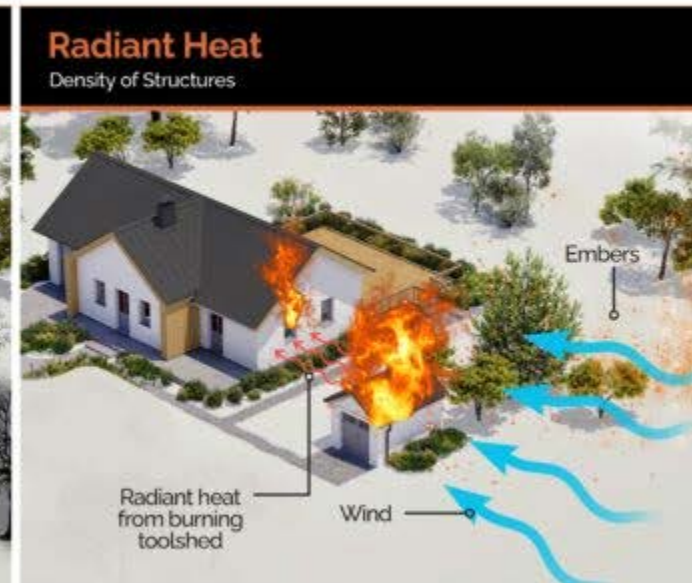
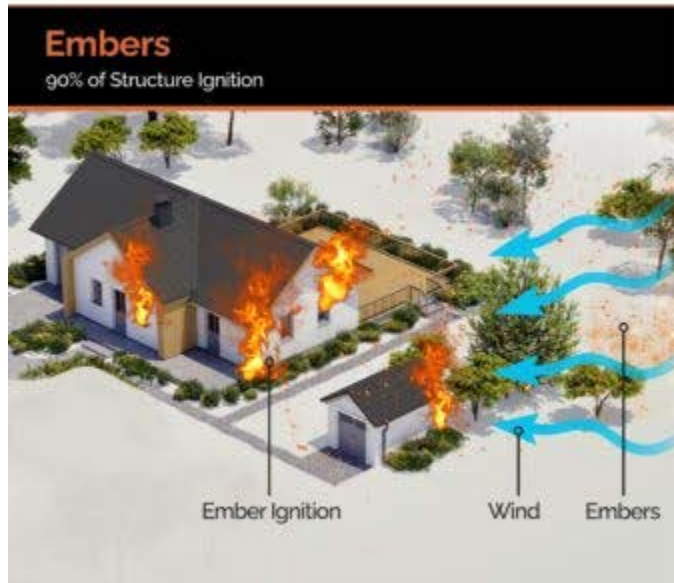


# Fuel Types



# Why Homes Catch Fire

## THREE REASONS HOUSES BURN DURING A WILDFIRE



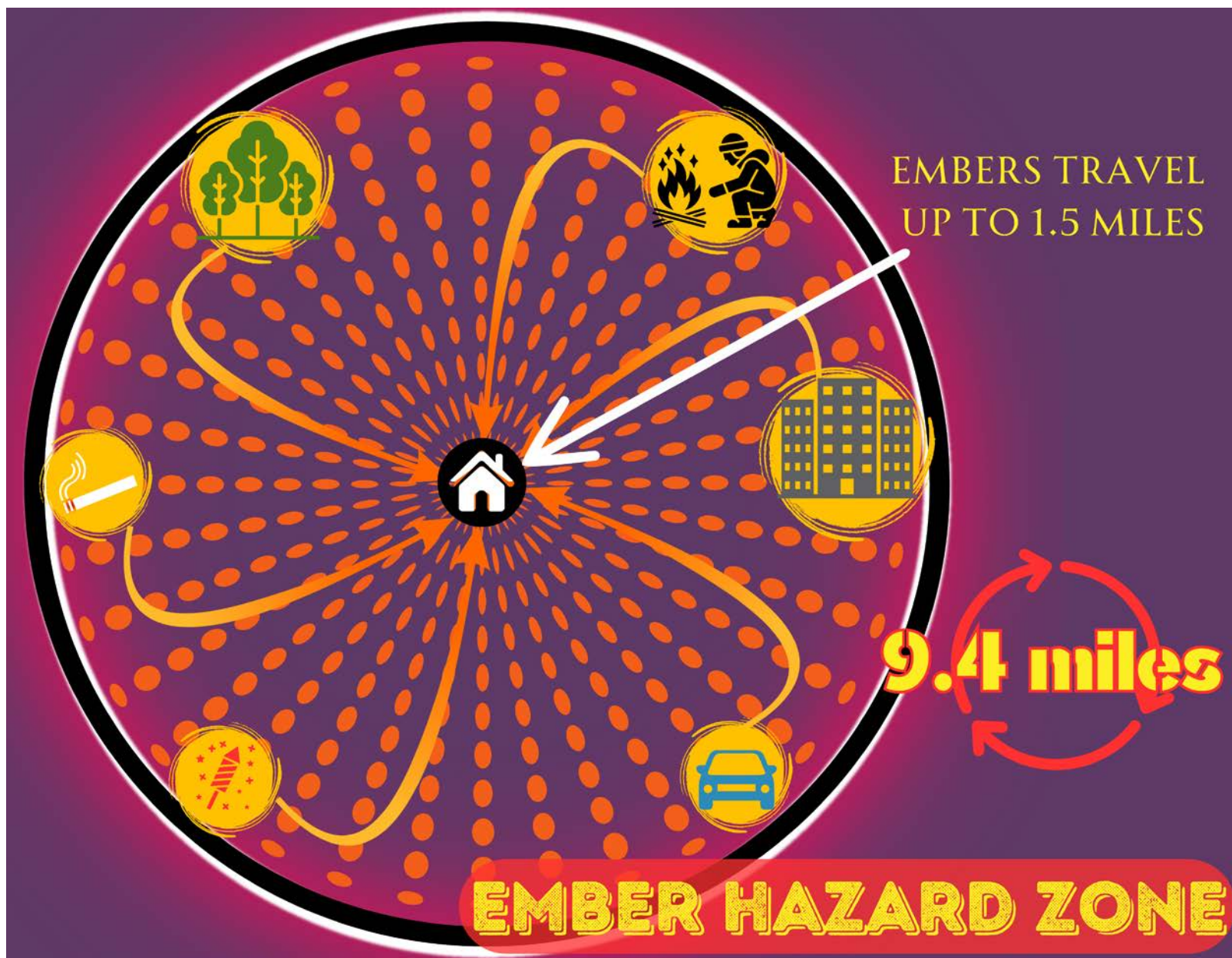
# Why Homes Catch Fire

Home ignitability also dictates that effective mitigating actions focus on the home and its immediate surroundings rather than on extensive wildland fuel management. Because homeowners typically assert their authority for the home and its immediate surroundings, the responsibility for effectively reducing home ignitability can only reside with the property owner rather than wildland agencies.



# Parmer Lane Fire, 2023



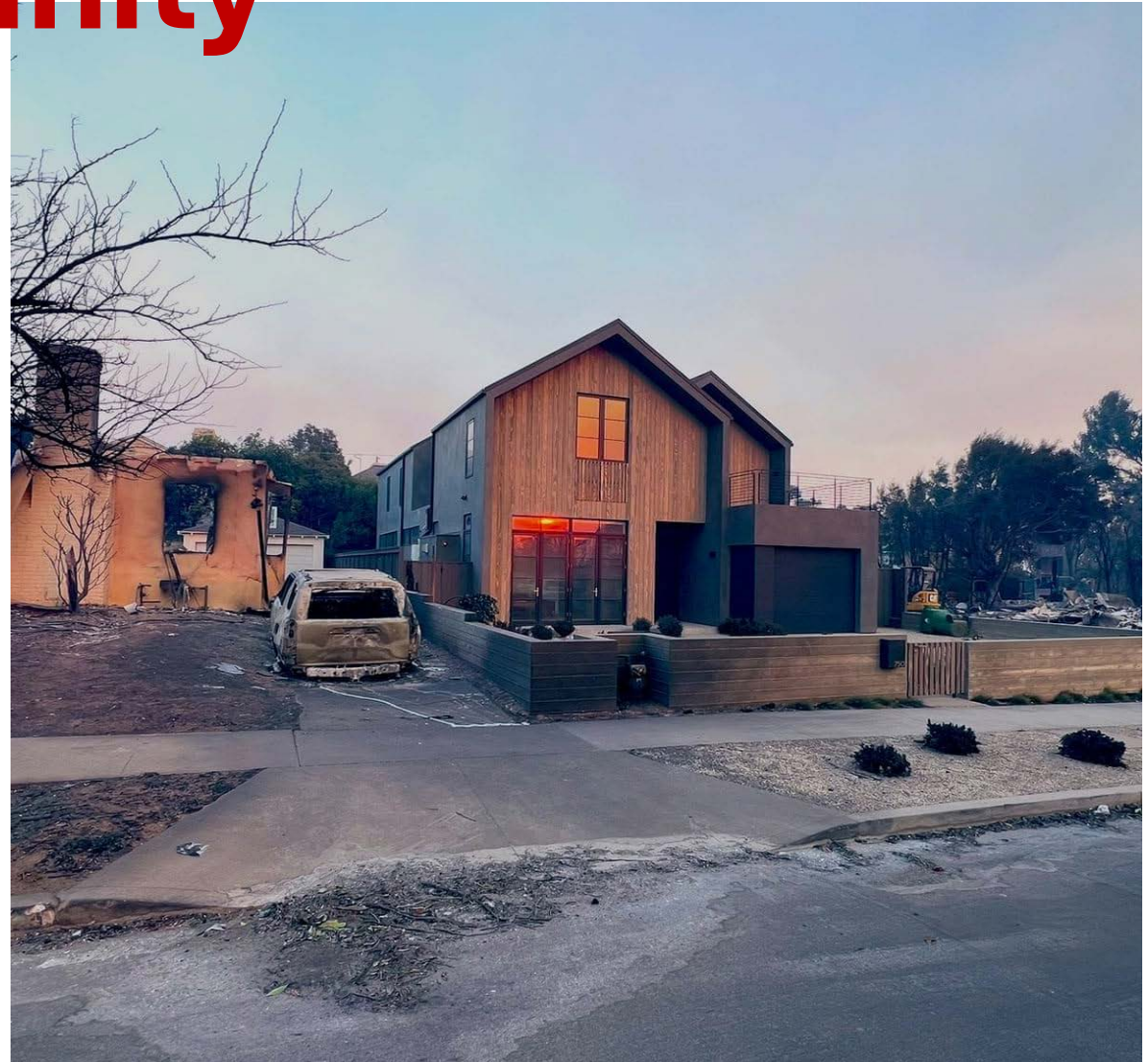




# FireWise **Community**

Great job on your house –

But do you want to live there by yourself?





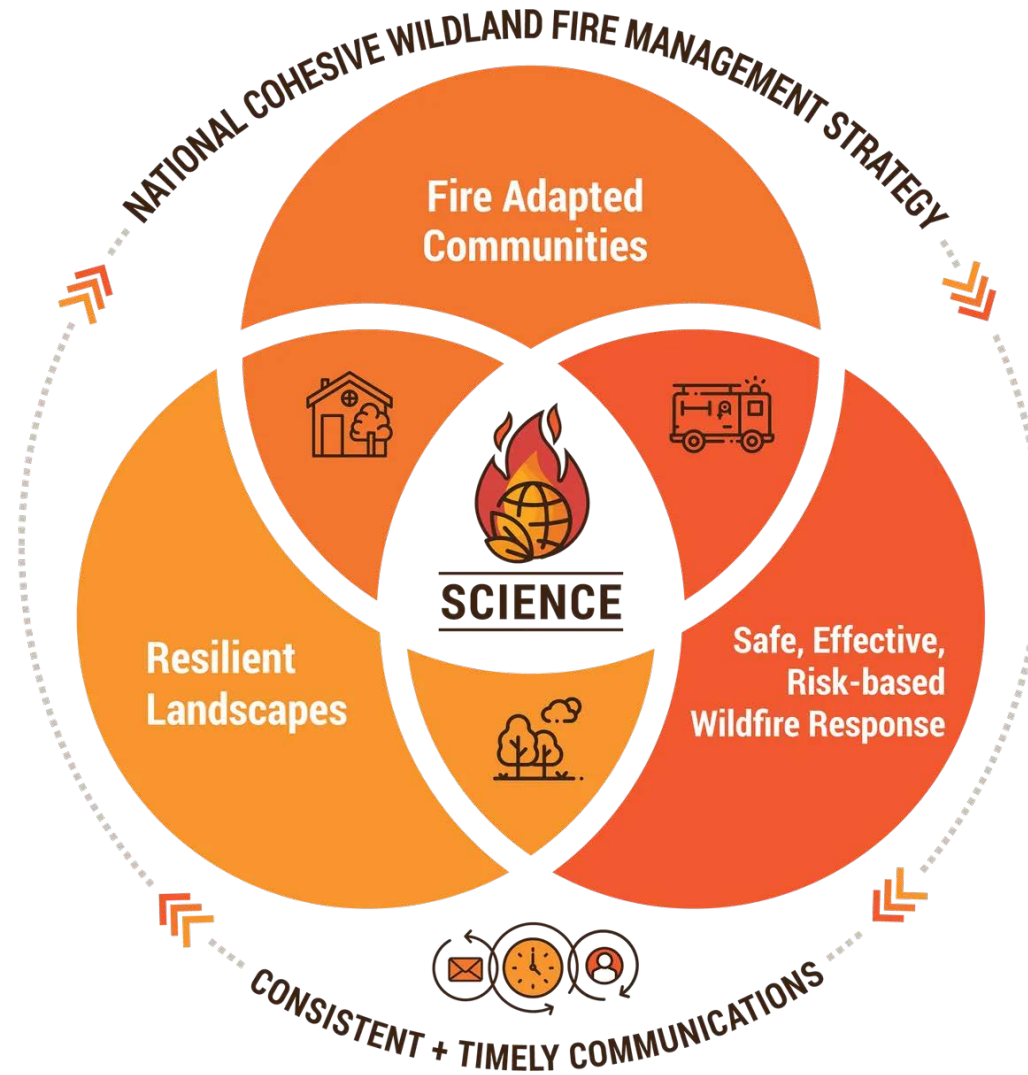
# Expectations for Response

There are 54 pumping apparatus in the City of Austin.  
For a structure fire, 4 pumping apparatus are dispatched...

Everything you do in advance gives your home a better chance.



# National Cohesive Wildland Fire Management Strategy





# Request a Home Wildfire Risk Assessment!

Or visit:

[atxwildfirehub.com](https://atxwildfirehub.com)

