

CITY OF AUSTIN'S ROLE IN WILDFIRE PREVENTION

with Council Member Marc Duchen

MARC DUCHEN
AUSTIN CITY COUNCIL | DISTRICT 10



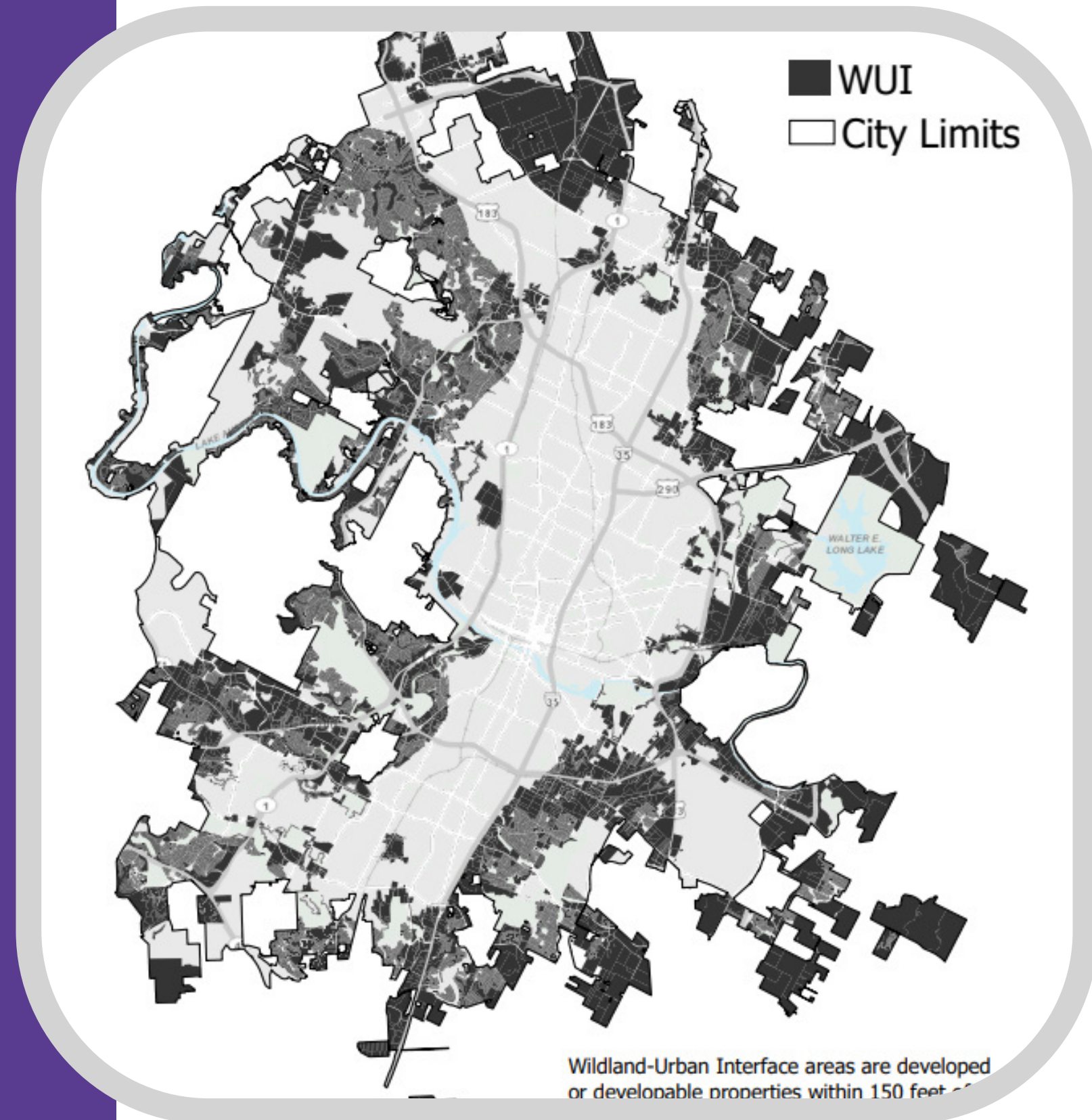
OUR PRIORITIES

- Wildfire Prevention & Preparedness
- Transparency, efficiency, good government
- Technology
- Problem-solving

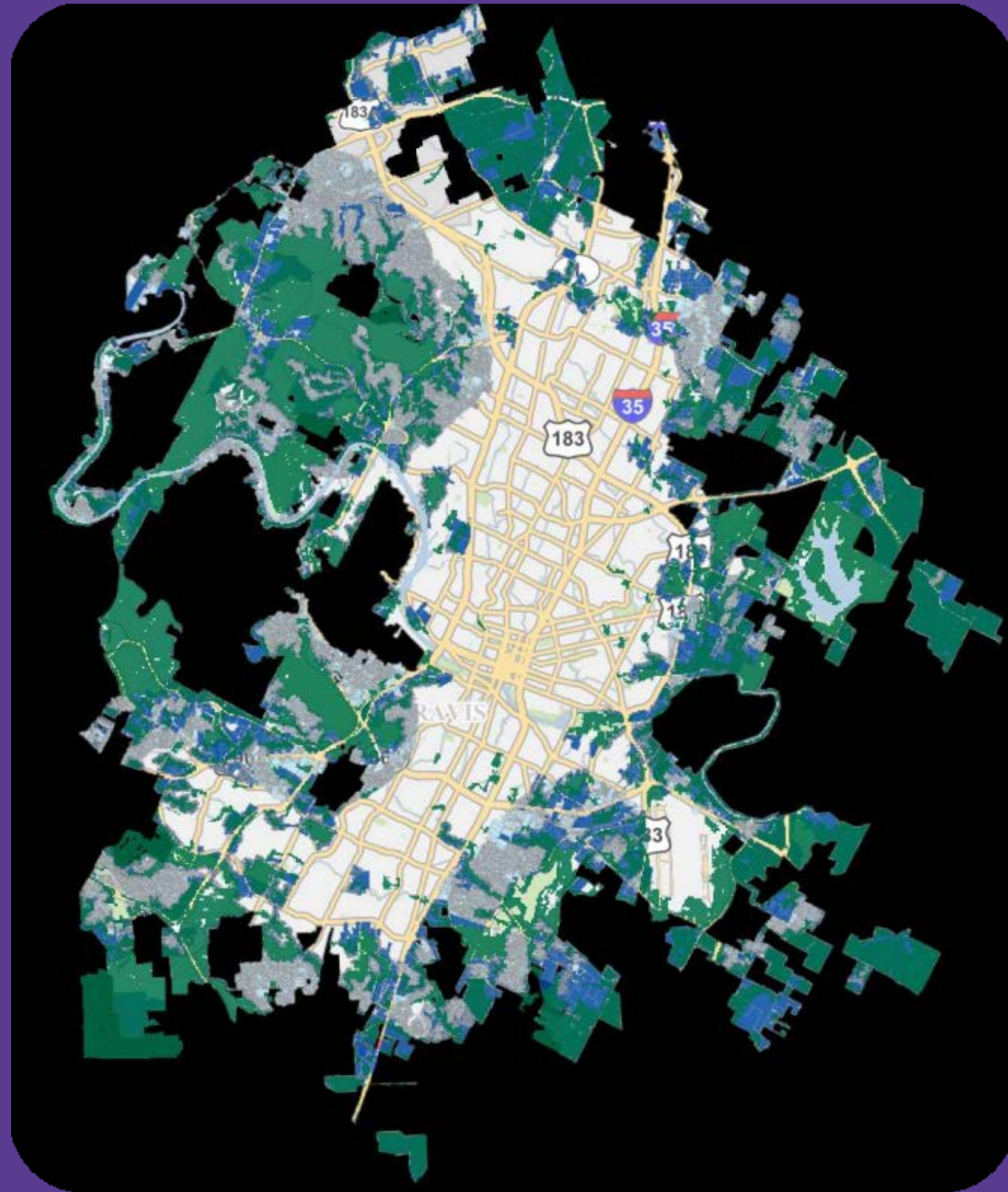


WILDFIRE PREVENTION MEASURES

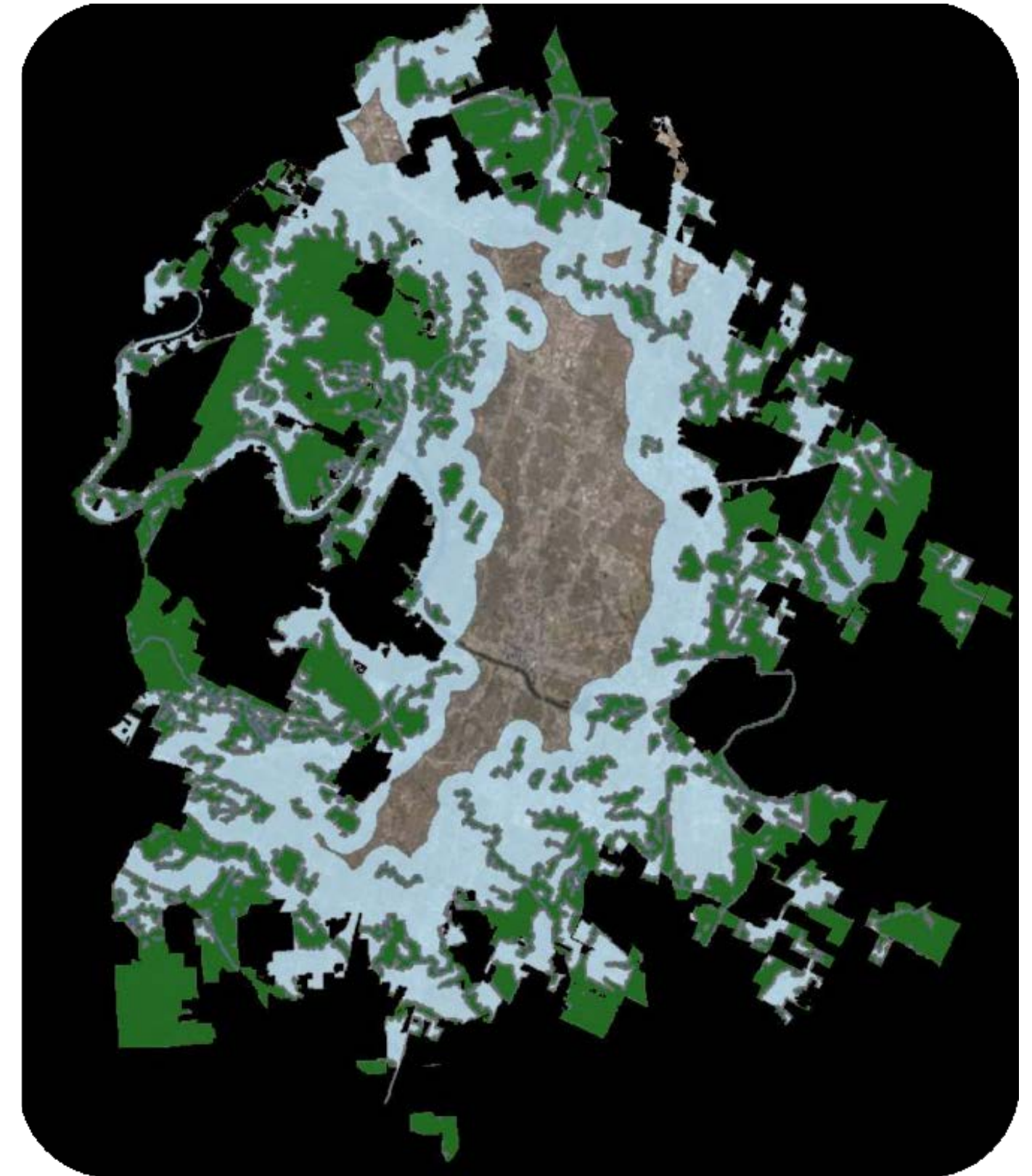
- Multi-department effort
- Wildfire Division (Chief Stewart)
- Land Management (PARD)
- HSEM Evacuation Plan
- Code – CWPP & WUI



WUI MAPS



Current 2015 Code WUI Map



Proposed 2024 WUI Map

KEY WUI MAP CHANGES

	Parcels		Area (acres)					
Austin Full & Limited Purpose	232,340 parcels		212,940 acres					
	Current 2015 WUI Map				Proposed 2024 WUI Map			
	Parcels	% Austin	Area	% Austin	Parcels	% Austin	Area	% Austin
Total Contributing Wildland			64,349 acres	30%			71,040 acres	33%
40 acres or greater *			64,349 acres	30%			71,040 acres	33%
750 acres or greater			21,912 acres	10%			55,944 acres	26%
WUI Area	79,263 parcels	34%	80,365 acres	38%	165,706 parcels	71%	109,342 acres	51%
Proximity Zone A & B (aka Proximity Zone, Class A & B) Inclusive of wildland	23,790 parcels	10%	60,960 acres	29%	27,067 parcels	12%	86,719 acres	41%
Proximity Zone C (currently Ember Zone, Class C)	55,473 parcels	24%	19,405 acres	9%	141,526 parcels	61%	93,663 acres	44%

*Wildland 40 acres or greater is inclusive of wildland 750 acres or greater.

OUR DISTRICT 10 ACTION PLAN

- Advocacy, Education & Outreach
- Planning & Coordination
- Insurance
- Resources – Budget, Grants, etc.
- “Dead and Down” Pilot



RESIDENT PREPAREDNESS MEASURES

- Request a home wildfire risk evaluation (SIZE)
- Home Hardening, FireWise Alliance
- Evacuation Plan
- Share your thoughts with City Council



OUR LAND USE UPDATES

- HOME Update
- Short Term Rentals
- Affordable Housing





THANK YOU



scan the QR code to sign up for our newsletter!