

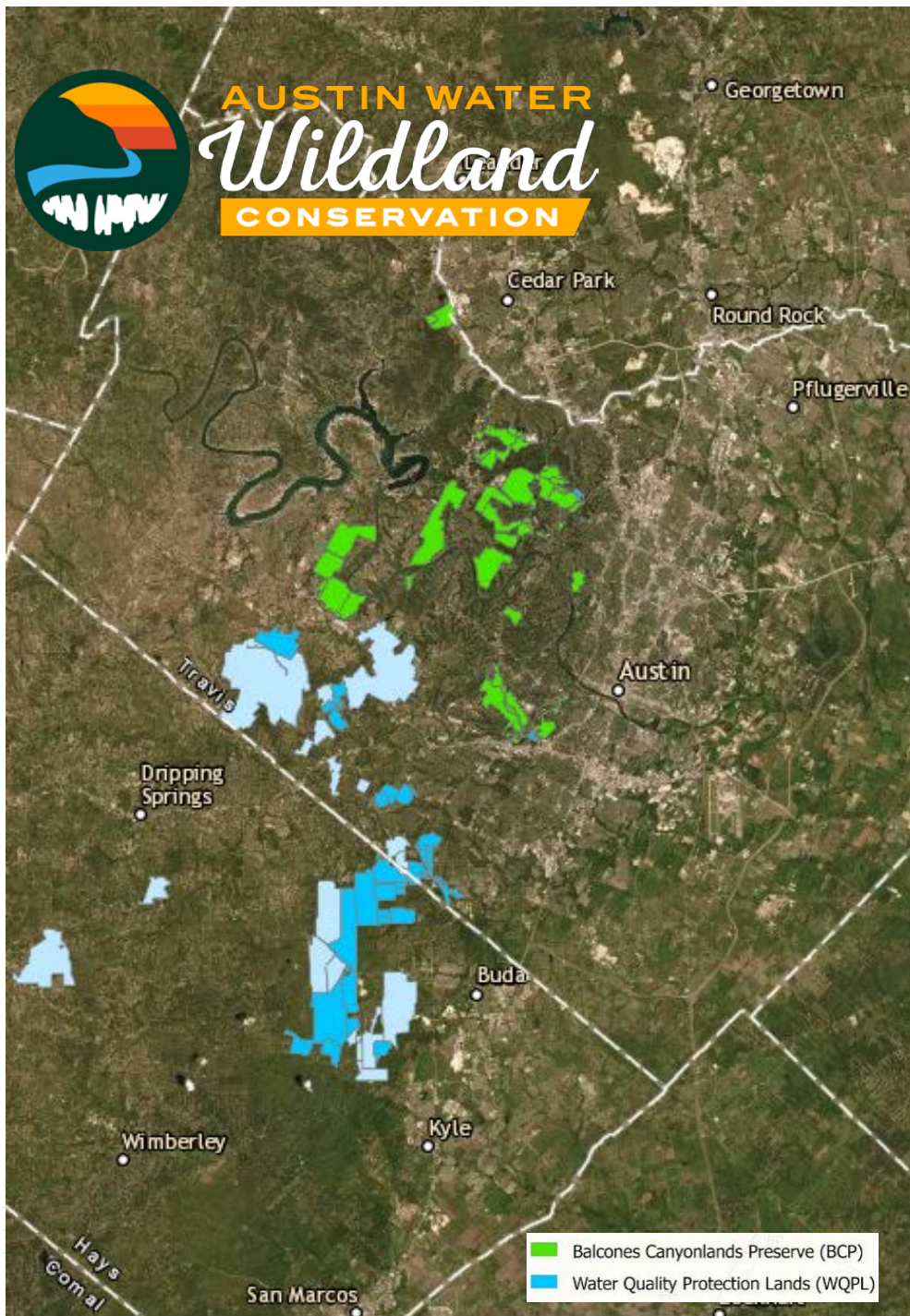


AUSTIN WATER
Wildland
CONSERVATION

Lands to Benefit Water, Wildlife, and People



March 2025



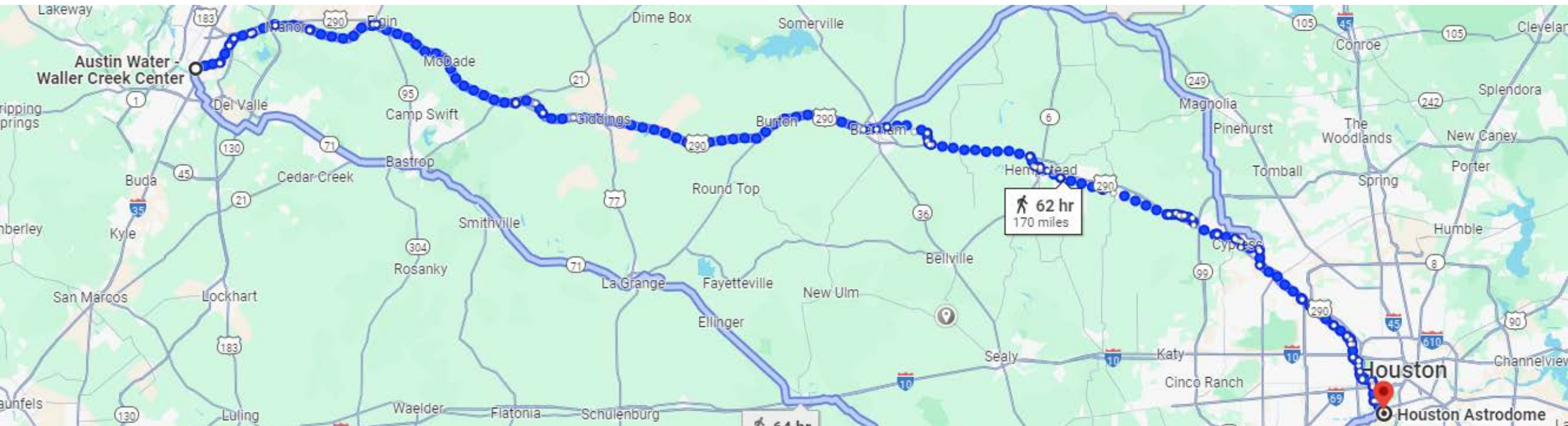
The Wildlands: A Unique Asset

- 💧 A network of conservation lands that benefit water, wildlife, and people
- 💧 A 25-year, \$250M+ commitment to protecting Austin's special places
- 💧 Managed under goals of two programs:
 - Balcones Canyonlands Preserve
 - Water Quality Protection Lands
- 💧 Intentionally placed with Austin Water to steward into the future



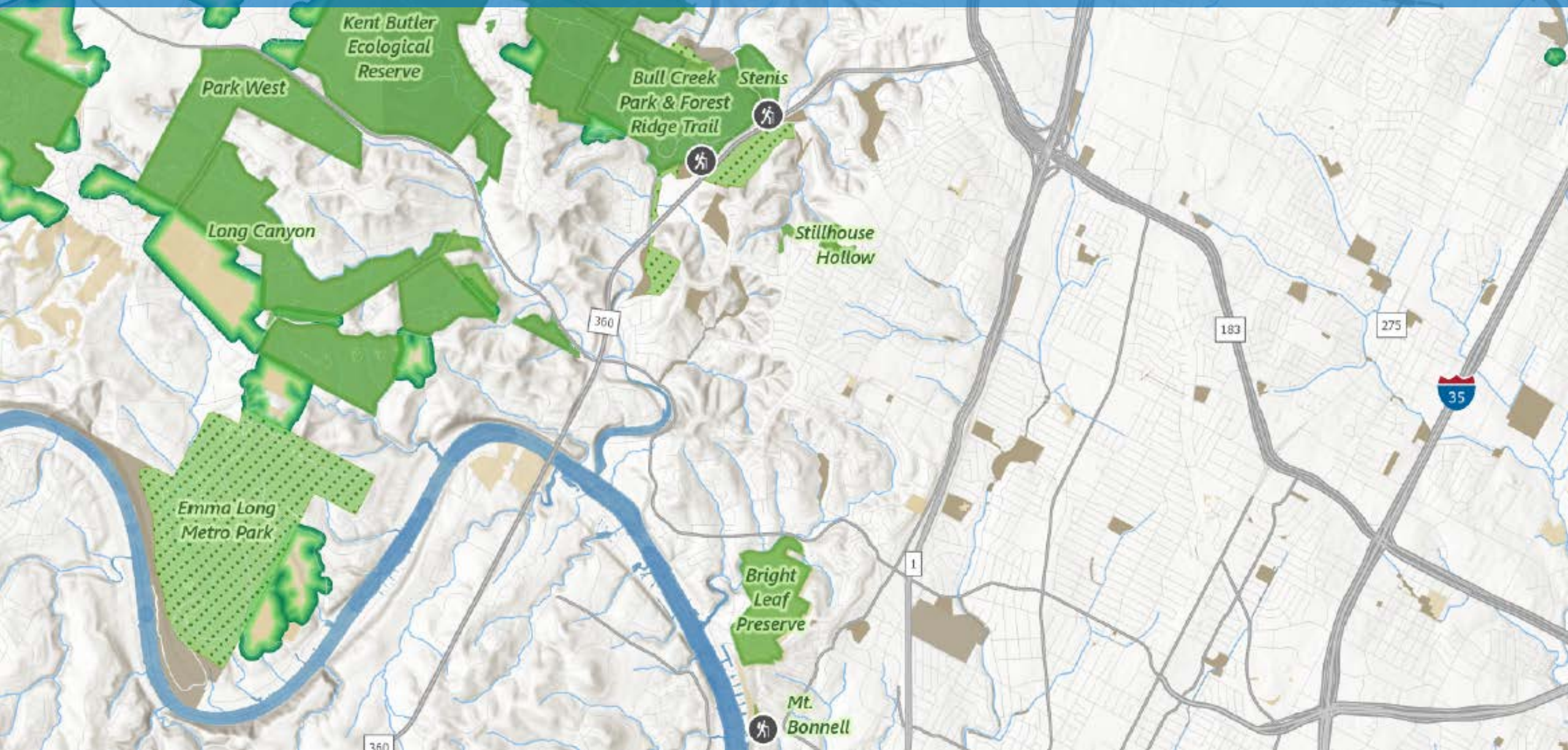
The Wildlands: Conservation at Scale

- ~23,000 acres of Austin Water-managed land
 - 15% larger than the City's park system
 - Bigger than 84 of Texas' 89 state parks
 - Larger than all of our nearby state parks combined
- 22,000 acres protected through conservation easements
- 30 miles from north to south; 1.5-hour drive
- 170+ miles of external boundaries



Handcox Water
Treatment Plant

Wildlands Near NWACA Neighborhoods





Balcones Canyonlands Preserve

- ♦ **Goal:** Protect woodland and cave habitat for endangered species & species of concern
- ♦ Provide streamlined mitigation for habitat loss from energy, communication & transportation infrastructure projects and development
- ♦ Public areas of preserve include some of Austin's favorite places:
 - Barton Creek
 - Mt. Bonnell
 - Bull Creek
- ♦ Helps to protect quality of our water supply in Lake Travis & Lake Austin watersheds

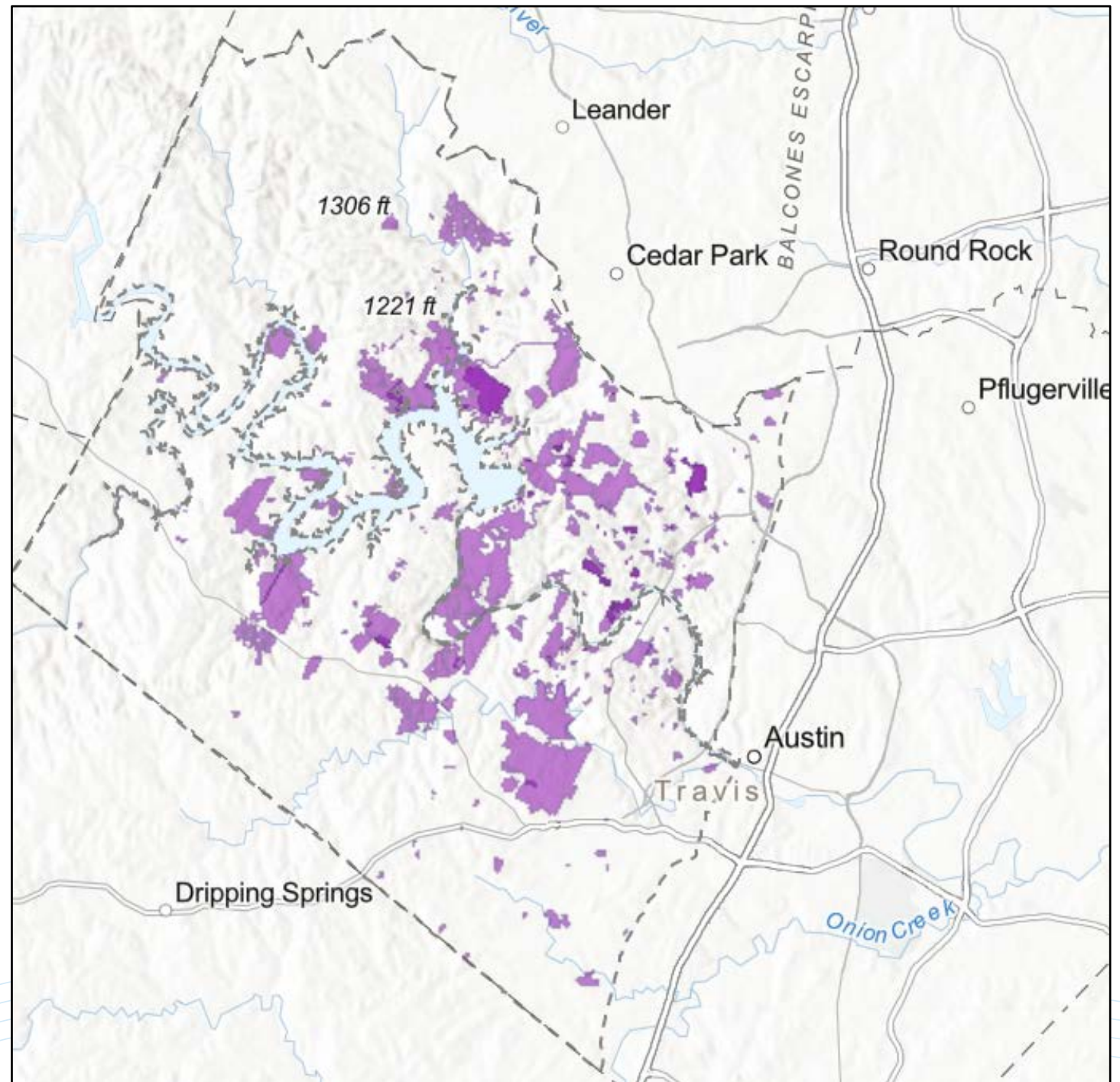


BCCP Take Permits

**1,500+ landowners/
developers**

400+ infrastructure projects

12,000+ acres



A photograph of a lush, green forest covering a hillside. The trees are dense and vibrant green, filling the lower two-thirds of the frame. Above the forest, a blue sky with scattered white clouds is visible. A dark brown horizontal band is superimposed across the middle of the image, containing the title text in white.

The Wildlands and Wildfire

The Good News: Austin is not California





- Wetter climate
- Different vegetation
- Less wind

BUT:

Conditions are
changing





Understanding Changing Wildfire Risk

- Working with U.S. Forest Service to update previous studies on wildfire fuels
- Working with UT Austin to install continuous fuel moisture monitors and tie to satellite data
- Working to document, map, and prioritize winter storm, drought impacts
- Coordinating with utilities, emergency providers, and others

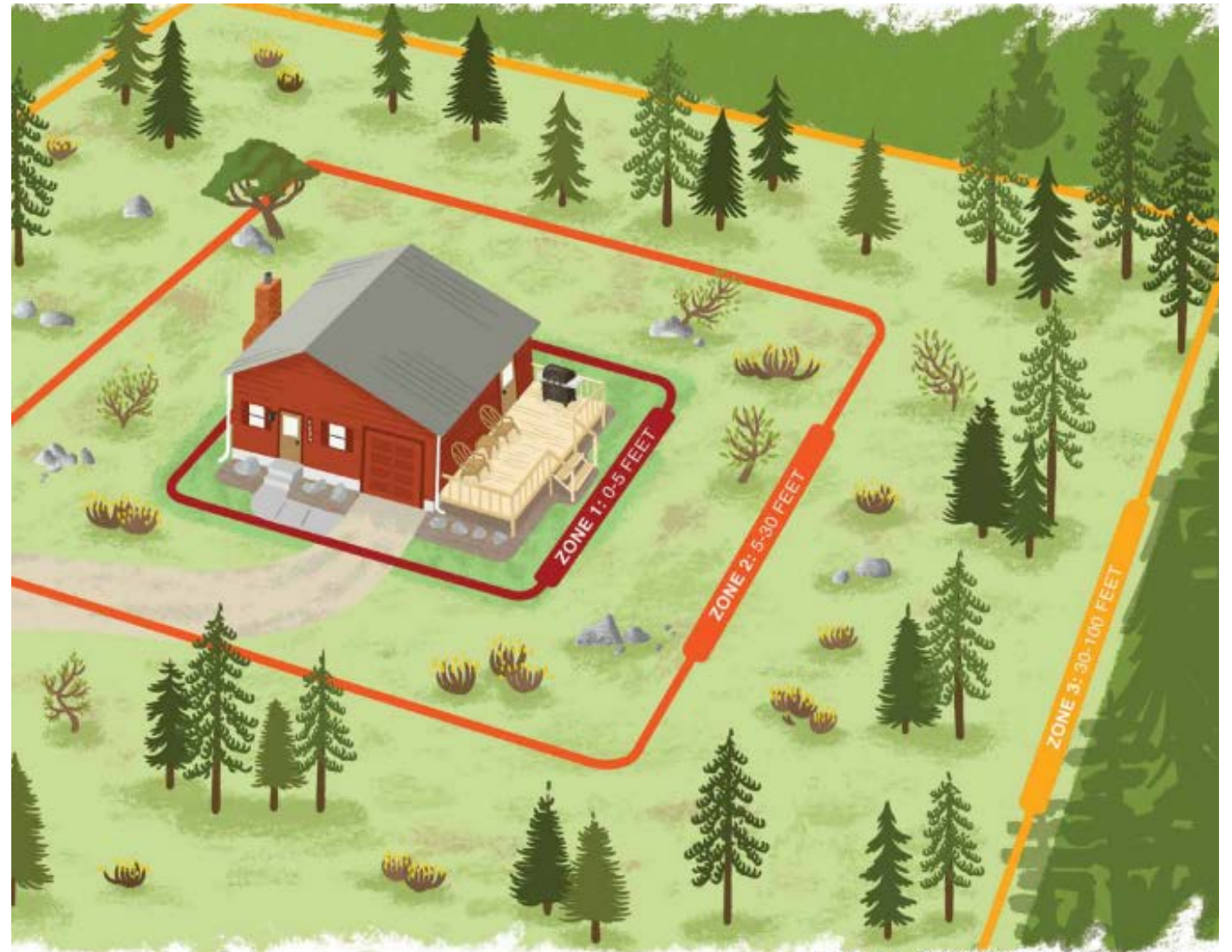


Creating Defensible Space

Zone 1: Prevent flames from coming in direct contact with the structure

Zone 2: Give an approaching fire less fuel

Zone 3: Keep/move fire to the ground + improve forest health



Home Ignition Zone Guide

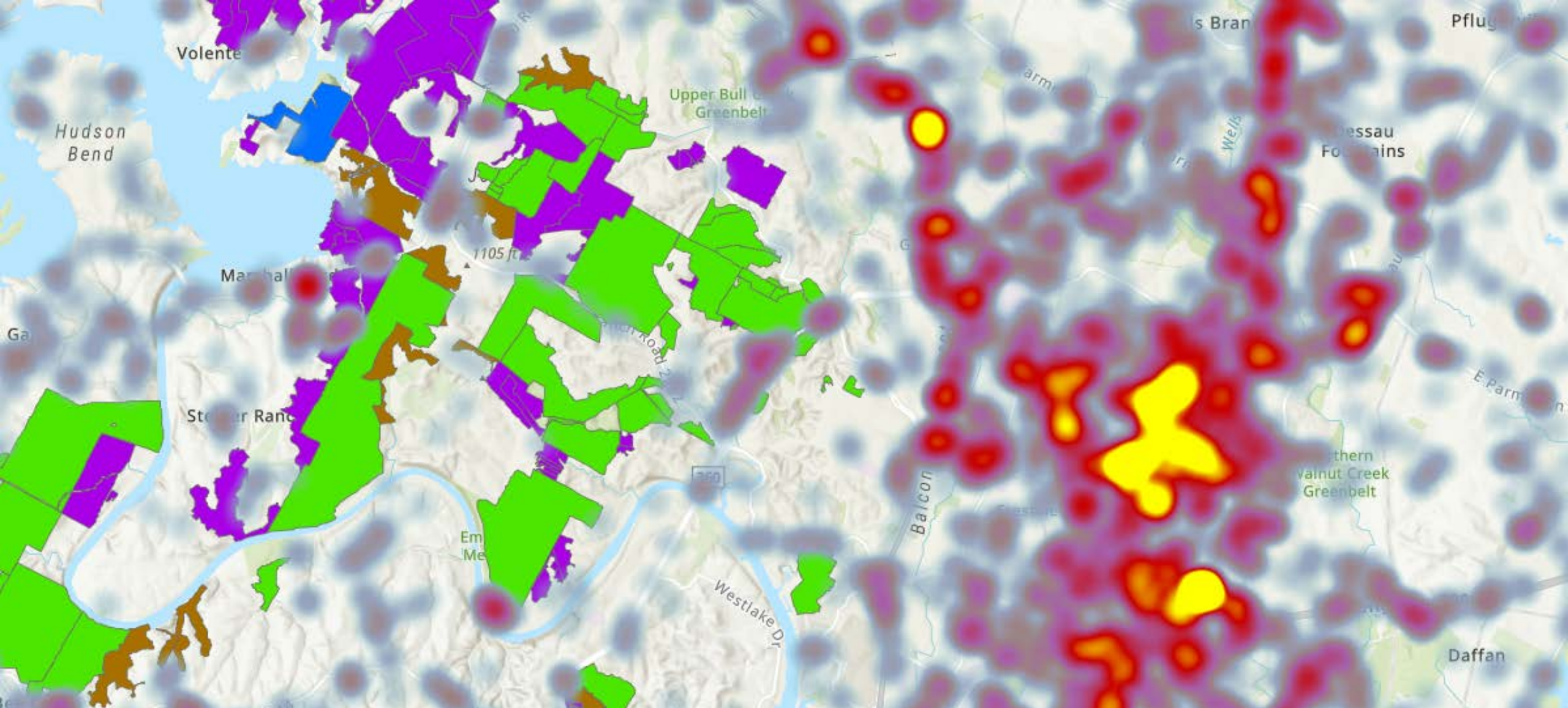
Illustration: Bonnie Palmatory, Colorado State



Shaded Fuel Breaks

- Reducing ladder fuels and maintaining shade adjacent to boundaries
- Completed 90,000+ linear feet to-date
- More susceptible to winter storm damage
- Require ongoing maintenance

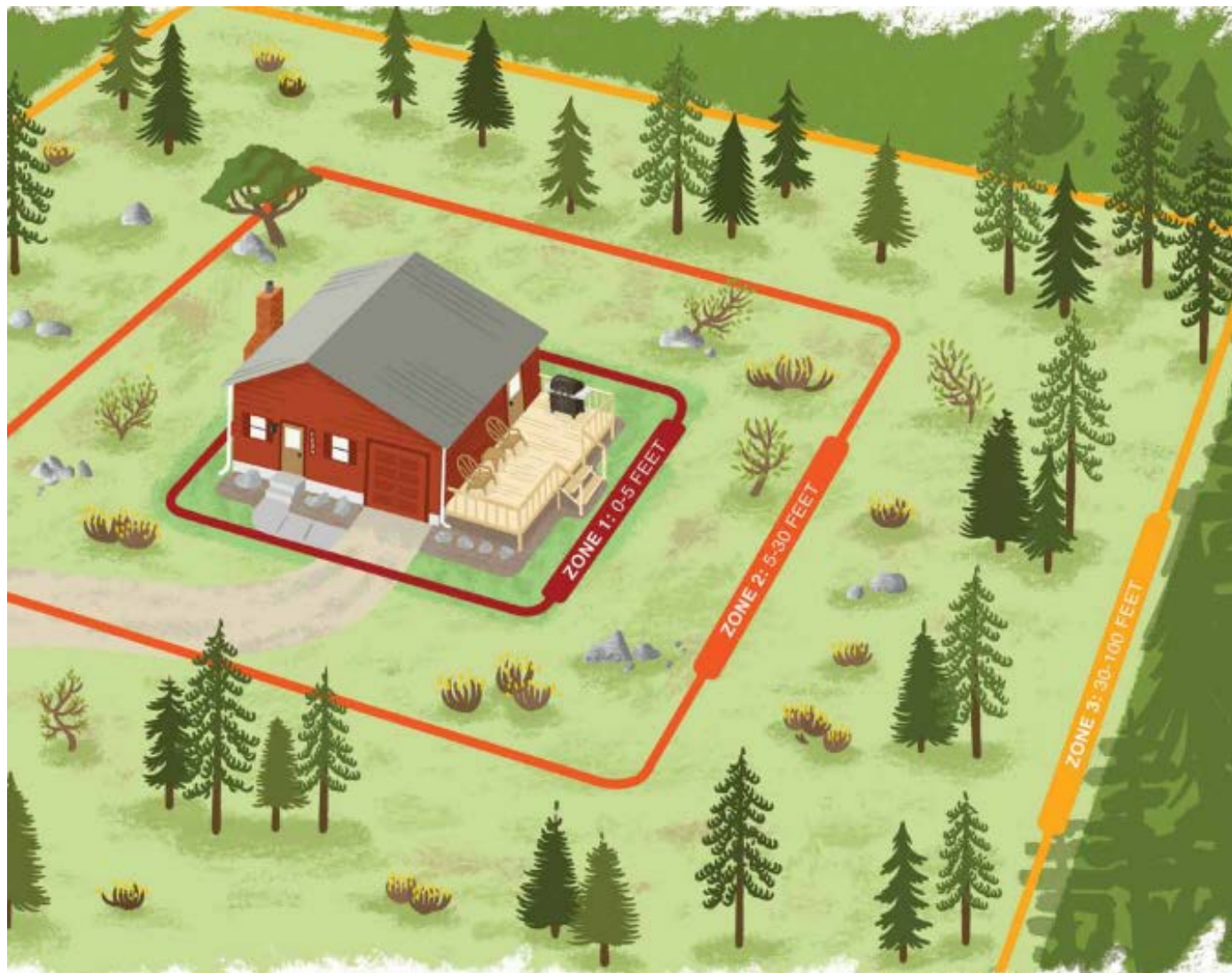
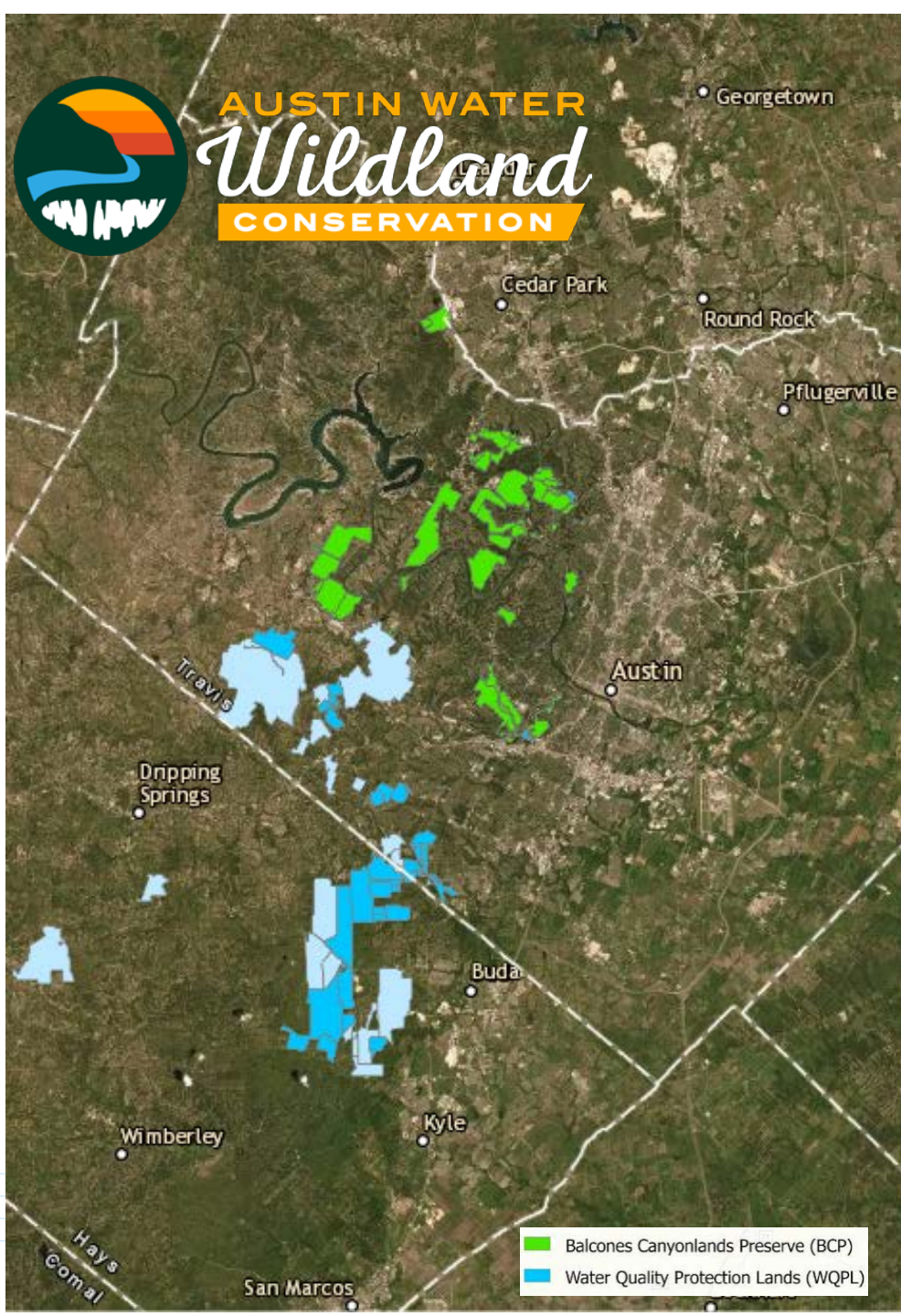




Additional Priority Treatment Areas



AUSTIN WATER *Wildland* CONSERVATION



Home Ignition Zone Guide

Illustration: Bonnie Palmatory, Colorado State



Partnerships Are Essential

- 💧 City Departments
- 💧 Land Management Organizations
- 💧 Emergency Services
- 💧 Research Partners
- 💧 Neighbors
- 💧 And you!



Thank you!

Justin Bates, wildlands@austintexas.gov

austintexas.gov/wildlandevents

