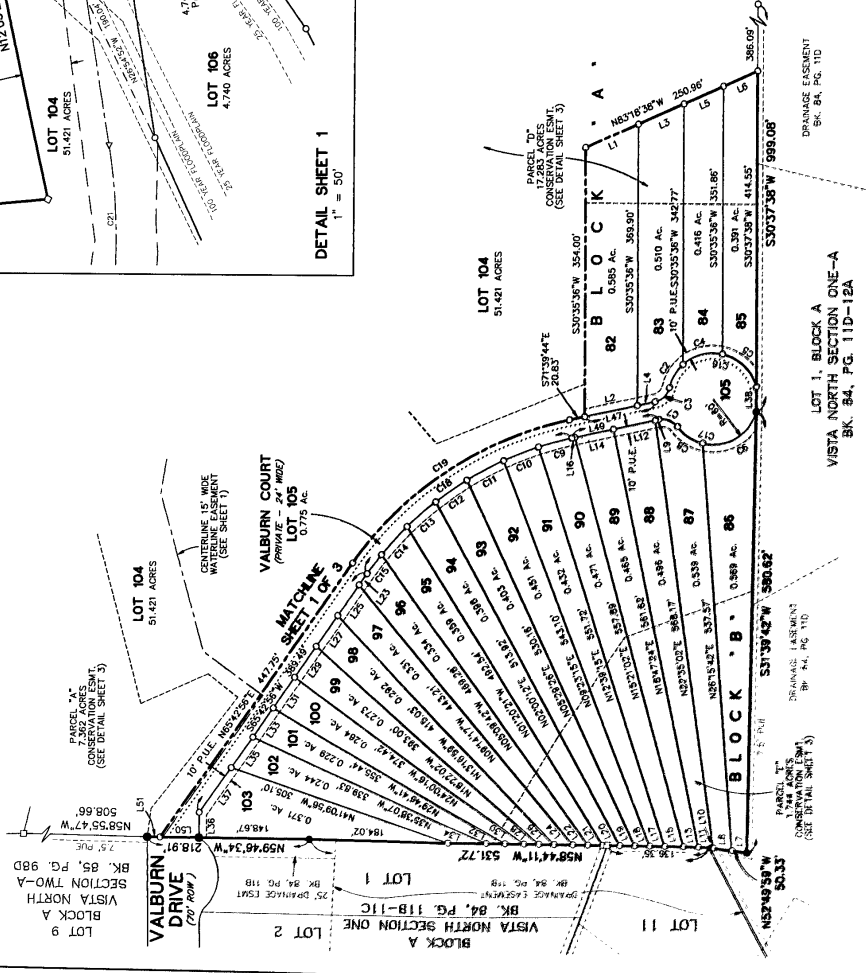
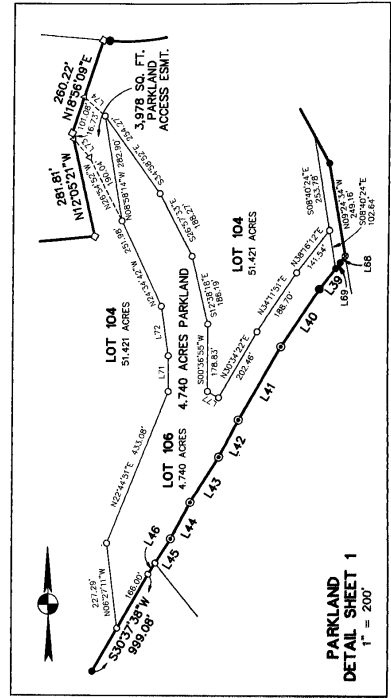
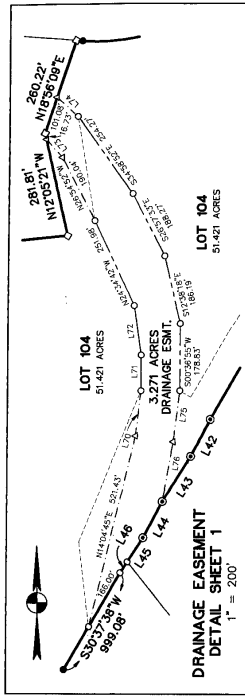
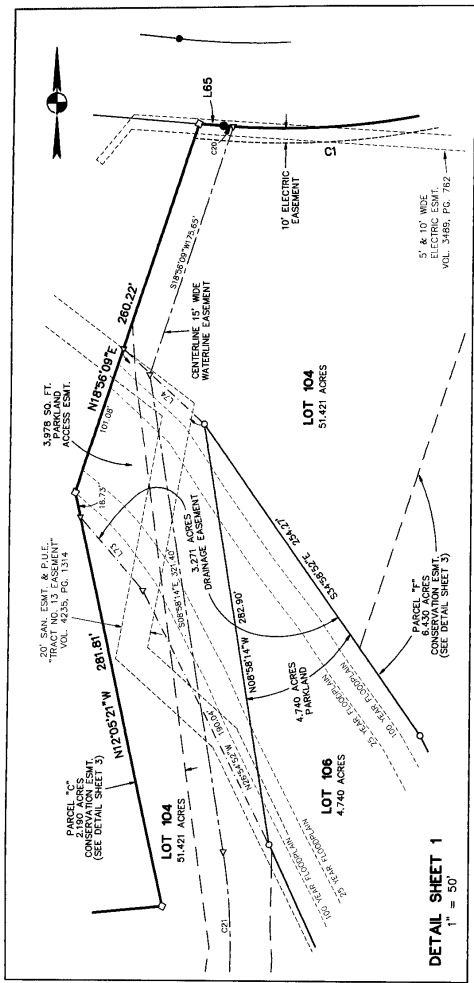


MISC FILM CODE
 00009605119

TREETOPS SUBDIVISION

- LEGEND**
- 1/2" IRON ROD FOUND (UNLESS OTHER SIZE NOTED)
 - 3/4" IRON PIPE FOUND
 - 606 NAIL FOUND
 - ▲ CONCRETE MONUMENT FOUND
 - ▲ CALCULATED POINT
 - ▲ PUBLIC UTILITY EASEMENT
 - ▲ SEWALK LOCATION
 - P.U.E.
 - P.U.E. LOCATION



TREETOPS SUBDIVISION
 DATE: AUGUST, 1995
 PREPARED BY:

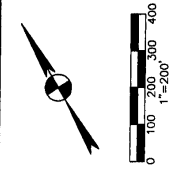
Bury+Pittman, Inc.
 Consulting Engineers and Surveyors
 Austin, Texas Tel 512/798-9811 Fax 512/798-0858
 Copyright 1995 Bury+Pittman, Inc.

PLS RECORD, TRAVIS COUNTY, TEXAS
 PROJECT NO. 95-27-88
 SHEET 2 OF 4

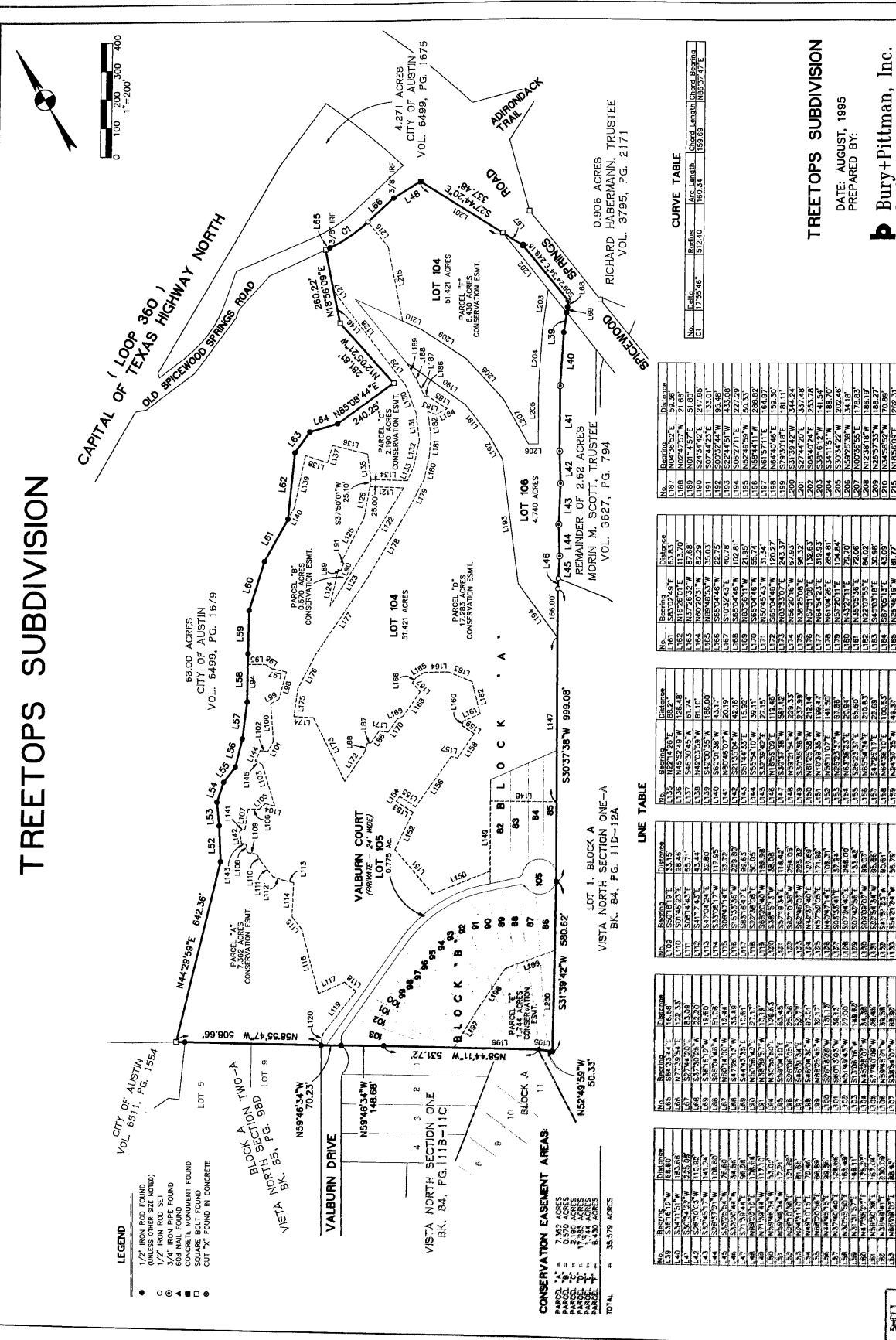
C814-85-024.3A

MISC. FILM CODE
 0000950120
 0000950120

TREETOPS SUBDIVISION



- LEGEND**
- 1/2" IRON ROD FOUND (UNLESS OTHER SIZE NOTED)
 - 1/2" IRON ROD SET
 - 1/2" IRON ROD FOUND
 - 600 NAIL FOUND
 - CONCRETE MONUMENT FOUND
 - SQUARE BOLT FOUND
 - CUT X FOUND IN CONCRETE



CURVE TABLE

No.	Bearing	Distance	Radius	Chord	Length	Chord-Bearing
1	N 73.55.46° E	512.40	256.20	512.40	135.61	S 80.57.41° E

LINE TABLE

No.	Bearing	Distance
L101	S 80.57.41° E	512.40
L102	S 80.57.41° E	512.40
L103	S 80.57.41° E	512.40
L104	S 80.57.41° E	512.40
L105	S 80.57.41° E	512.40
L106	S 80.57.41° E	512.40
L107	S 80.57.41° E	512.40
L108	S 80.57.41° E	512.40
L109	S 80.57.41° E	512.40
L110	S 80.57.41° E	512.40
L111	S 80.57.41° E	512.40
L112	S 80.57.41° E	512.40
L113	S 80.57.41° E	512.40
L114	S 80.57.41° E	512.40
L115	S 80.57.41° E	512.40
L116	S 80.57.41° E	512.40
L117	S 80.57.41° E	512.40
L118	S 80.57.41° E	512.40
L119	S 80.57.41° E	512.40
L120	S 80.57.41° E	512.40
L121	S 80.57.41° E	512.40
L122	S 80.57.41° E	512.40
L123	S 80.57.41° E	512.40
L124	S 80.57.41° E	512.40
L125	S 80.57.41° E	512.40
L126	S 80.57.41° E	512.40
L127	S 80.57.41° E	512.40
L128	S 80.57.41° E	512.40
L129	S 80.57.41° E	512.40
L130	S 80.57.41° E	512.40
L131	S 80.57.41° E	512.40
L132	S 80.57.41° E	512.40
L133	S 80.57.41° E	512.40
L134	S 80.57.41° E	512.40
L135	S 80.57.41° E	512.40
L136	S 80.57.41° E	512.40
L137	S 80.57.41° E	512.40
L138	S 80.57.41° E	512.40
L139	S 80.57.41° E	512.40
L140	S 80.57.41° E	512.40
L141	S 80.57.41° E	512.40
L142	S 80.57.41° E	512.40
L143	S 80.57.41° E	512.40
L144	S 80.57.41° E	512.40
L145	S 80.57.41° E	512.40
L146	S 80.57.41° E	512.40
L147	S 80.57.41° E	512.40
L148	S 80.57.41° E	512.40
L149	S 80.57.41° E	512.40
L150	S 80.57.41° E	512.40
L151	S 80.57.41° E	512.40
L152	S 80.57.41° E	512.40
L153	S 80.57.41° E	512.40
L154	S 80.57.41° E	512.40
L155	S 80.57.41° E	512.40
L156	S 80.57.41° E	512.40
L157	S 80.57.41° E	512.40
L158	S 80.57.41° E	512.40
L159	S 80.57.41° E	512.40
L160	S 80.57.41° E	512.40
L161	S 80.57.41° E	512.40
L162	S 80.57.41° E	512.40
L163	S 80.57.41° E	512.40
L164	S 80.57.41° E	512.40
L165	S 80.57.41° E	512.40
L166	S 80.57.41° E	512.40
L167	S 80.57.41° E	512.40
L168	S 80.57.41° E	512.40
L169	S 80.57.41° E	512.40
L170	S 80.57.41° E	512.40
L171	S 80.57.41° E	512.40
L172	S 80.57.41° E	512.40
L173	S 80.57.41° E	512.40
L174	S 80.57.41° E	512.40
L175	S 80.57.41° E	512.40
L176	S 80.57.41° E	512.40
L177	S 80.57.41° E	512.40
L178	S 80.57.41° E	512.40
L179	S 80.57.41° E	512.40
L180	S 80.57.41° E	512.40
L181	S 80.57.41° E	512.40
L182	S 80.57.41° E	512.40
L183	S 80.57.41° E	512.40
L184	S 80.57.41° E	512.40
L185	S 80.57.41° E	512.40
L186	S 80.57.41° E	512.40
L187	S 80.57.41° E	512.40
L188	S 80.57.41° E	512.40
L189	S 80.57.41° E	512.40
L190	S 80.57.41° E	512.40
L191	S 80.57.41° E	512.40
L192	S 80.57.41° E	512.40
L193	S 80.57.41° E	512.40
L194	S 80.57.41° E	512.40
L195	S 80.57.41° E	512.40
L196	S 80.57.41° E	512.40
L197	S 80.57.41° E	512.40
L198	S 80.57.41° E	512.40
L199	S 80.57.41° E	512.40
L200	S 80.57.41° E	512.40
L201	S 80.57.41° E	512.40
L202	S 80.57.41° E	512.40
L203	S 80.57.41° E	512.40
L204	S 80.57.41° E	512.40
L205	S 80.57.41° E	512.40
L206	S 80.57.41° E	512.40
L207	S 80.57.41° E	512.40
L208	S 80.57.41° E	512.40
L209	S 80.57.41° E	512.40
L210	S 80.57.41° E	512.40
L211	S 80.57.41° E	512.40
L212	S 80.57.41° E	512.40
L213	S 80.57.41° E	512.40
L214	S 80.57.41° E	512.40
L215	S 80.57.41° E	512.40
L216	S 80.57.41° E	512.40
L217	S 80.57.41° E	512.40
L218	S 80.57.41° E	512.40

3
 3 of 4

MISC. FILM CODE
00009606121

TREETOPS SUBDIVISION

STATE OF TEXAS X
COUNTY OF TRAVIS X
KNOW ALL MEN BY THESE PRESENTS X

THAT TREETOPS, L.P., A TEXAS LIMITED PARTNERSHIP ACTING HEREIN BY AND THROUGH ITS AGENT, ARTHUR G. CARPENTER, AUTHORIZED REPRESENTATIVE OF TREETOPS, L.P., OWNERS OF THAT CERTAIN 69.988 ACRES TRACT OF LAND OUT OF THE JAMES COLEMAN SURVEY NO. 25, ABSTRACT NO. 189, SITUATED IN TRAVIS COUNTY, TEXAS, AND ALL OTHER INTERESTS THEREIN, HAS HEREBY CONVEYED TO SAID TREETOPS, L.P., BY DEED OF RECORD IN VOLUME 12380, PAGE 897 OF THE PUBLIC RECORDS OF TRAVIS COUNTY, TEXAS, DO HEREBY CONVEYED TO SAID TREETOPS, L.P., ALL THAT CERTAIN SUBDIVISION SHOWN AS "TREETOPS SUBDIVISION," SUBJECT TO THE COVENANTS AND RESTRICTIONS SHOWN THEREON, SUBJECT TO ANY EASEMENTS AND/OR RESTRICTIONS HERETOFORE GRANTED AND NOT RELEASED, FURTHER, THAT THE RESPONSIBILITY FOR MAINTENANCE AND REPAIR OF THE TREETOPS SUBDIVISION SHALL BE THE RESPONSIBILITY OF THE OWNERS ASSOCIATION OF VALBUEN COURT HOMEOWNERS ASSOCIATION, INC., AS SHOWN ON VOL. 12314, PG. 808-810 OF THE TRAVIS COUNTY DEED RECORDS, AND ALL AREAS FOR THE USE OF THE SURFACE FOR ALL GOVERNMENTAL FUNCTIONS, VEHICULAR AND PEDESTRIAN TRAILS, SIDEWALKS, UTILITY LINES, AND ALL OTHER UTILITIES NECESSARY, AND WE DO FURTHER AGREE THAT ALL GOVERNMENTAL ENTITIES, THEIR AGENTS AND EMPLOYEES, SHALL BE GRANTED THE RIGHT OF ACCESS TO ANY AND ALL OCCURRING TO THE SURFACE OF THE SAID PRIVATE STREET AND ANY COMMON AREA AS A RESULT OF GOVERNMENTAL VEHICLES TRAVERSING OVER SAME, PURSUANT TO CHAPTER 212 OF THE TEXAS LOCAL GOVERNMENT CODE AND TITLE 13 OF THE AUSTIN CITY CODE.

ARTHUR G. CARPENTER, AUTHORIZED REPRESENTATIVE
CARBIL CAPITAL CORPORATION
1000 W. WHELAN, SUITE 1470
AUSTIN, TEXAS 78701
DATE 1-29-96

STATE OF TEXAS X
COUNTY OF TRAVIS X
THIS INSTRUMENT WAS ACKNOWLEDGED BEFORE ME ON THE 29th DAY OF JANUARY, 1996, BY ARTHUR G. CARPENTER, KNOWN TO ME TO BE THE PERSON WHOSE NAME IS SUBSCRIBED TO THE FOREGOING INSTRUMENT AND WHOSE SIGNATURE IS SET FORTH THEREIN, AND WHOSE SIGNATURE AND THE PURPOSES THEREIN EXPRESSED AND IN THE CAPACITY THEREIN STATED.

SEEN UNDER MY HAND AND SEAL OF OFFICE THIS 29th DAY OF JANUARY, 1996 A.D.
[Signature]

NOTARY PUBLIC
IN AND FOR THE STATE OF TEXAS
[Signature]
MY COMMISSION EXPIRES
[Seal]

FLOOD PLAIN NOTE
1. THE 100 YEAR FLOOD PLAIN WILL BE CONTAINED WITHIN THE DRAINAGE EASEMENTS SHOWN HEREON.
2. PORTIONS OF THIS TRACT ARE WITHIN THE LIMITS OF ZONE 1-2 100-YEAR FLOOD PLAIN, AS SHOWN ON THE FLOOD PLAIN MAP OF TRAVIS COUNTY, TEXAS, INSURANCE ADMINISTRATION FIRM PANEL NO. 44830059E, DATED JUNE 18, 1993, FOR TRAVIS COUNTY, TEXAS AND INCORPORATED AREAS.

ENGINEERS CERTIFICATION
I, CHRISTOPHER M. RUIZ, AM AUTHORIZED UNDER THE LAWS OF THE STATE OF TEXAS TO PRACTICE THE PROFESSION OF ENGINEERING, AND HEREBY CERTIFY THAT THIS PLAT REPRESENTS THE WORK AND DESIGN OF AN ENGINEER AND THAT THE ENGINEERING IS TRUE AND CORRECT TO THE BEST OF MY KNOWLEDGE.

[Signature]
CHRISTOPHER M. RUIZ, P.E.
TEXAS REGISTRATION NO. 80894
3345 BEE CAVES ROAD, SUITE 200
AUSTIN, TEXAS 78746

SURVEYOR CERTIFICATION
I, JOHN T. BLANKSKO, AM AUTHORIZED UNDER THE LAWS OF THE STATE OF TEXAS TO PRACTICE THE PROFESSION OF SURVEYING AND HEREBY CERTIFY THAT THIS PLAT REPRESENTS THE WORK AND DESIGN OF A SURVEYOR AND THAT THE SURVEYING IS TRUE AND CORRECT TO THE BEST OF MY KNOWLEDGE.

[Signature]
JOHN T. BLANKSKO, S.P.L.S.
TEXAS REGISTRATION NO. 4889
3345 BEE CAVES ROAD, SUITE 200
AUSTIN, TEXAS 78746



CITY CERTIFICATION
APPROVED FOR ACCEPTANCE:
[Signature]
ALICE BRYAN, CLERK
DEPARTMENT OF PLANNING AND DEVELOPMENT

FILED 2-9-96

ACCEPTED AND AUTHORIZED FOR RECORD BY THE PLANNING COMMISSION, CITY OF AUSTIN, TEXAS, THIS THE 23rd DAY OF FEBRUARY, 1996, A.D.

[Signature]
KATHY VASQUEZ-REVALLA, SECRETARY

FILED FOR RECORD AT 1 O'CLOCK P.M. ON THE 20th DAY OF FEBRUARY, 1996, A.D.
DANA DEBEAUVOR, COUNTY CLERK
TRAVIS COUNTY, TEXAS
BY [Signature]



STATE OF TEXAS X
COUNTY OF TRAVIS X

I, DANA DEBEAUVOR, CLERK OF TRAVIS COUNTY, TEXAS, DO HEREBY CERTIFY THAT THE FOREGOING INSTRUMENT OF WRITING AND ITS CONTENTS HAVE BEEN FILED FOR RECORD IN MY OFFICE ON THE 20th DAY OF FEBRUARY, 1996, A.D. AT 1 O'CLOCK P.M., AND DULY RECORDED ON THE 20th DAY OF FEBRUARY, 1996, A.D. AT 1 O'CLOCK P.M., PLAT RECORDS OF SAID COUNTY AND STATE IN PLAT BOOK 916 - PAGE(S) 191-196

WITNESS MY HAND AND SEAL OF THE COUNTY CLERK, THE 20th DAY OF FEBRUARY, 1996, A.D.



DANA DEBEAUVOR, COUNTY CLERK
TRAVIS COUNTY, TEXAS
DEPUTY
[Signature]
Rose Marie Martinez

FILED FOR RECORD AT 1 O'CLOCK P.M. ON THE 20th DAY OF FEBRUARY, 1996, A.D.



DANA DEBEAUVOR, COUNTY CLERK
TRAVIS COUNTY, TEXAS
DEPUTY
[Signature]
Rose Marie Martinez

TREETOPS SUBDIVISION
DATE: AUGUST, 1995
PREPARED BY:

B Bury + Pittman, Inc.
Consulting Engineers and Surveyors
Austin, Texas Tel 512/528-4811 Fax 512/528-4828
© copyright 1995 Bury+Pittman, Inc.

Plat Date: 1/29/96
File #: H-93210121P4-6-96
Drawn By: J.L.B.
Project No.: 932-21-89