

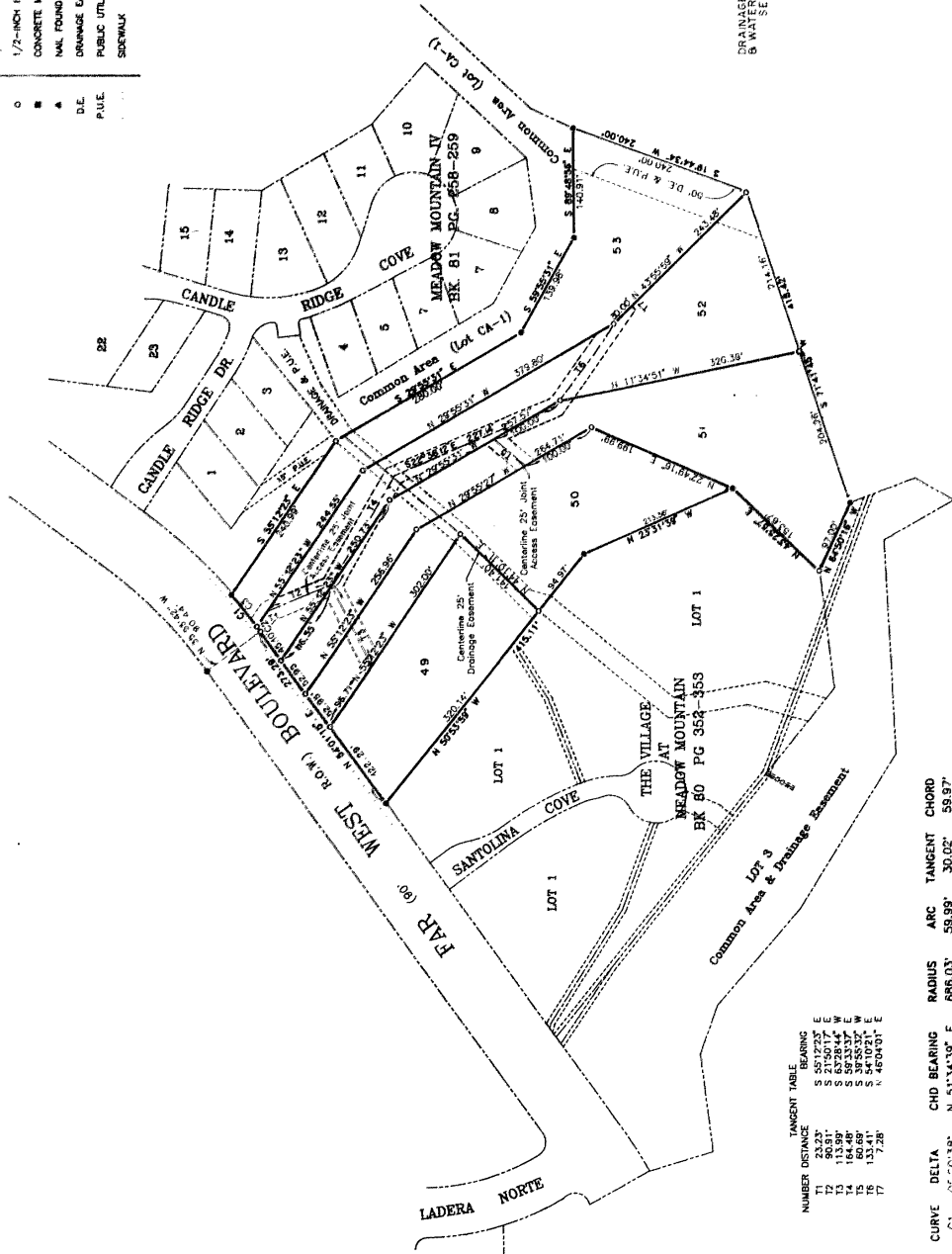
MISC FILM CODE
 00009501556
 SCALE: 1"=100'



LEGEND

- 1/2-INCH IRON ROD FOUND
- 1/2-INCH IRON ROD SET
- CONCRETE MONUMENT FOUND
- ▲ NAIL FOUND
- DRAINAGE EASEMENT
- PUBLIC UTILITY EASEMENT
- P.U.E.
- SIDEWALK

THE OVERLOOK AT CAT MOUNTAIN
 SECTION ONE



TANGENT TABLE

NUMBER	DISTANCE	BEARING
T1	23.23'	S 55°12'23" E
T2	180.81'	S 21°56'17" E
T3	144.48'	S 59°33'37" E
T4	184.48'	S 38°55'37" W
T5	60.89'	S 38°55'37" W
T6	17.28'	N 46°04'01" E

CURVE	DELTA	CHD BEARING	RADIUS	ARC	TANGENT	CHORD
C1	107°38'	N 53°45'37" E	886.03'	59.89'	30.02'	59.97'
C2	107°38'	N 53°45'37" E	886.03'	59.89'	3.92'	7.85'
C3	107°38'	N 51°17'59" E	886.03'	52.15'	26.09'	52.14'

6.4
 DRAINAGE CONSERVATION
 B WATER QUALITY ESMT
 SEE PG 4

McANGUS SURVEYING CO.
 1101 HWY. 360 SOUTH, R-230
 AUSTIN, TEXAS 78746
 (512) 328 - 9302

156.00 1596 11/3/18

11/24/18

THE OVERLOOK AT CAT MOUNTAIN
 SECTION ONE

MISC FILM CODE
 00009501557



SCALE: 1" = 100'

LEGEND

- 1/2"-HIGH IRON ROD FOUND
- 1/2"-HIGH IRON ROD SET
- CONCRETE MONUMENT SET
- BL BUILDING LINE
- SIDEWALK
- DRAINAGE EASEMENT
- PUBLIC UTILITY EASEMENT
- CRITICAL ENVIRONMENTAL FEATURE

54
 DRAINAGE, CONSERVATION,
 & WATER QUALITY EASEMENT
 SEE PAGES 4 & 5



TANGENT TABLE

12	43.13° N 08°21'20" E
13	56.00° S 07°39'17" E

CURVE TABLE

NO.	DELTA	CH. BEARING	RADIUS	ARC	TAN	C-ORD
C1	45.000000	N 18.0000° W	143.35	110.01	62.80	17.23
C2	77.000000	N 25.1816° W	30.00	40.40	23.33	37.42
C3	23.700000	S 14.4301° E	60.00	28.42	16.42	28.28
C4	11.450000	N 47.2511° E	215.00	58.42	28.31	58.31
C5	28.132518	N 69.2325° E	60.00	10.35	67.53	18.17
C6	55.748116	S 69.2325° E	60.00	19.47	10.28	18.17
C7	28.132518	S 69.2325° E	60.00	10.35	67.53	18.17
C8	30.000000	S 08°17'32" E	20.00	31.42	20.00	28.28
C9	47.000000	N 15°42'24" E	20.00	19.08	44.33	13.58
C10	47.000000	N 15°42'24" E	20.00	19.08	44.33	13.58
C11	08.482828	N 32.1816° E	183.35	25.02	12.23	24.97
C12	88.280337	S 32.1816° E	183.35	25.02	12.23	24.97
C13	59.343137	N 32.1816° E	60.00	62.39	14.35	59.02
C14	88.280337	S 32.1816° E	60.00	62.39	14.35	59.02
C15	09.004488	N 48.4507° E	215.00	43.58	27.84	43.54
C16	09.004488	N 48.4507° E	215.00	43.58	27.84	43.54
C17	32.400000	S 48.4507° E	215.00	43.58	27.84	43.54
C18	32.400000	S 48.4507° E	215.00	43.58	27.84	43.54
C19	32.400000	S 48.4507° E	215.00	43.58	27.84	43.54
C20	32.400000	S 48.4507° E	215.00	43.58	27.84	43.54
C21	44.350000	N 44.3500° E	60.00	77.44	45.17	71.15
C22	44.350000	N 44.3500° E	60.00	77.44	45.17	71.15
C23	44.350000	N 44.3500° E	60.00	77.44	45.17	71.15
C24	44.350000	N 44.3500° E	60.00	77.44	45.17	71.15
C25	44.350000	N 44.3500° E	60.00	77.44	45.17	71.15
C26	05.051111	N 49.0500° E	325.00	28.85	14.44	28.84
C27	05.051111	N 49.0500° E	325.00	28.85	14.44	28.84
C28	35.484838	N 35.4848° E	215.35	20.01	18.01	18.01
C29	35.484838	N 35.4848° E	215.35	20.01	18.01	18.01

McANGUS SURVEYING CO.
 1101 HWY. 360, SOUTH, E-230
 AUSTIN, TEXAS 78746
 (512) 358 - 9802

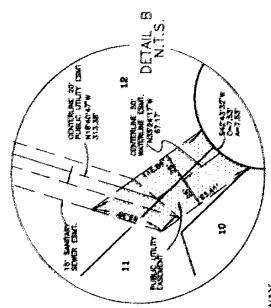
00009501558
 MISC FILM CODE
 SCALE: 1"=100'
 (1"=100')



THE OVERLOOK AT CAT MOUNTAIN
 SECTION ONE

LEGEND

- 1/2-INCH IRON ROD FOUND
- 1/2-INCH IRON ROD SET
- CONCRETE MONUMENT FOUND
- NAIL FOUND
- IRON PIPE FOUND
- BUILDING LINE
- SIDEWALK
- DRAINAGE EASEMENT
- PUBLIC UTILITY EASEMENT



DETAIL B
 N.T.S.

54
 DRAINAGE, CONSERVATION
 & WATER QUALITY ESMT.
 SEE PG. 4

1000' HILL COUNTRY ROADWAY

SEE PG. 2

SEE DETAIL A

SEE DETAIL B

SEE PG. 4

SEE PG. 5

SEE PG. 6

SEE PG. 7

SEE PG. 8

SEE PG. 9

SEE PG. 10

SEE PG. 11

SEE PG. 12

SEE PG. 13

SEE PG. 14

SEE PG. 15

SEE PG. 16

SEE PG. 17

SEE PG. 18

SEE PG. 19

SEE PG. 20

SEE PG. 21

SEE PG. 22

SEE PG. 23

SEE PG. 24

SEE PG. 25

SEE PG. 26

SEE PG. 27

SEE PG. 28

SEE PG. 29

SEE PG. 30

SEE PG. 31

SEE PG. 32

SEE PG. 33

SEE PG. 34

SEE PG. 35

SEE PG. 36

SEE PG. 37

SEE PG. 38

SEE PG. 39

SEE PG. 40

SEE PG. 41

SEE PG. 42

SEE PG. 43

SEE PG. 44

SEE PG. 45

SEE PG. 46

SEE PG. 47

SEE PG. 48

SEE PG. 49

SEE PG. 50

SEE PG. 51

SEE PG. 52

SEE PG. 53

SEE PG. 54

SEE PG. 55

SEE PG. 56

SEE PG. 57

SEE PG. 58

SEE PG. 59

SEE PG. 60

SEE PG. 61

SEE PG. 62

SEE PG. 63

SEE PG. 64

SEE PG. 65

SEE PG. 66

SEE PG. 67

SEE PG. 68

SEE PG. 69

SEE PG. 70

SEE PG. 71

SEE PG. 72

SEE PG. 73

SEE PG. 74

SEE PG. 75

SEE PG. 76

SEE PG. 77

SEE PG. 78

SEE PG. 79

SEE PG. 80

SEE PG. 81

SEE PG. 82

SEE PG. 83

SEE PG. 84

SEE PG. 85

SEE PG. 86

SEE PG. 87

SEE PG. 88

SEE PG. 89

SEE PG. 90

SEE PG. 91

SEE PG. 92

SEE PG. 93

SEE PG. 94

SEE PG. 95

SEE PG. 96

SEE PG. 97

SEE PG. 98

SEE PG. 99

SEE PG. 100

54
 DRAINAGE, CONSERVATION
 & WATER QUALITY ESMT.
 SEE PG. 4

TANGENT TABLE

NO.	DELTA	CH. BEARING	RADIUS	ARC	TAN.	CHORD
11	33.00°	N 082°17' E	273.00'	131.15'	98.52'	187.43'
12	45.00°	N 53°33' E	273.00'	131.15'	98.52'	187.43'
13	45.00°	S 01°13' W	273.00'	131.15'	98.52'	187.43'
14	45.00°	S 01°13' W	273.00'	131.15'	98.52'	187.43'
15	45.00°	S 01°13' W	273.00'	131.15'	98.52'	187.43'
16	45.00°	S 01°13' W	273.00'	131.15'	98.52'	187.43'
17	45.00°	S 01°13' W	273.00'	131.15'	98.52'	187.43'
18	45.00°	S 01°13' W	273.00'	131.15'	98.52'	187.43'
19	45.00°	S 01°13' W	273.00'	131.15'	98.52'	187.43'
20	45.00°	S 01°13' W	273.00'	131.15'	98.52'	187.43'
21	45.00°	S 01°13' W	273.00'	131.15'	98.52'	187.43'
22	45.00°	S 01°13' W	273.00'	131.15'	98.52'	187.43'
23	45.00°	S 01°13' W	273.00'	131.15'	98.52'	187.43'
24	45.00°	S 01°13' W	273.00'	131.15'	98.52'	187.43'
25	45.00°	S 01°13' W	273.00'	131.15'	98.52'	187.43'
26	45.00°	S 01°13' W	273.00'	131.15'	98.52'	187.43'
27	45.00°	S 01°13' W	273.00'	131.15'	98.52'	187.43'
28	45.00°	S 01°13' W	273.00'	131.15'	98.52'	187.43'
29	45.00°	S 01°13' W	273.00'	131.15'	98.52'	187.43'
30	45.00°	S 01°13' W	273.00'	131.15'	98.52'	187.43'
31	45.00°	S 01°13' W	273.00'	131.15'	98.52'	187.43'
32	45.00°	S 01°13' W	273.00'	131.15'	98.52'	187.43'
33	45.00°	S 01°13' W	273.00'	131.15'	98.52'	187.43'
34	45.00°	S 01°13' W	273.00'	131.15'	98.52'	187.43'
35	45.00°	S 01°13' W	273.00'	131.15'	98.52'	187.43'
36	45.00°	S 01°13' W	273.00'	131.15'	98.52'	187.43'
37	45.00°	S 01°13' W	273.00'	131.15'	98.52'	187.43'
38	45.00°	S 01°13' W	273.00'	131.15'	98.52'	187.43'
39	45.00°	S 01°13' W	273.00'	131.15'	98.52'	187.43'
40	45.00°	S 01°13' W	273.00'	131.15'	98.52'	187.43'
41	45.00°	S 01°13' W	273.00'	131.15'	98.52'	187.43'
42	45.00°	S 01°13' W	273.00'	131.15'	98.52'	187.43'
43	45.00°	S 01°13' W	273.00'	131.15'	98.52'	187.43'
44	45.00°	S 01°13' W	273.00'	131.15'	98.52'	187.43'
45	45.00°	S 01°13' W	273.00'	131.15'	98.52'	187.43'
46	45.00°	S 01°13' W	273.00'	131.15'	98.52'	187.43'
47	45.00°	S 01°13' W	273.00'	131.15'	98.52'	187.43'
48	45.00°	S 01°13' W	273.00'	131.15'	98.52'	187.43'
49	45.00°	S 01°13' W	273.00'	131.15'	98.52'	187.43'
50	45.00°	S 01°13' W	273.00'	131.15'	98.52'	187.43'
51	45.00°	S 01°13' W	273.00'	131.15'	98.52'	187.43'
52	45.00°	S 01°13' W	273.00'	131.15'	98.52'	187.43'
53	45.00°	S 01°13' W	273.00'	131.15'	98.52'	187.43'
54	45.00°	S 01°13' W	273.00'	131.15'	98.52'	187.43'

CURVE TABLE

NO.	DELTA	CH. BEARING	RADIUS	ARC	TAN.	CHORD
C1	39.51°	N 152°32' E	273.00'	131.15'	98.52'	187.43'
C2	40.18°	N 152°32' E	273.00'	131.15'	98.52'	187.43'
C3	28.44°	S 01°13' W	273.00'	131.15'	98.52'	187.43'
C4	28.44°	S 01°13' W	273.00'	131.15'	98.52'	187.43'
C5	28.44°	S 01°13' W	273.00'	131.15'	98.52'	187.43'
C6	31.51°	S 01°13' W	273.00'	131.15'	98.52'	187.43'
C7	17.58°	S 01°13' W	273.00'	131.15'	98.52'	187.43'
C8	45.00°	S 01°13' W	273.00'	131.15'	98.52'	187.43'
C9	45.00°	S 01°13' W	273.00'	131.15'	98.52'	187.43'
C10	45.00°	S 01°13' W	273.00'	131.15'	98.52'	187.43'
C11	45.00°	S 01°13' W	273.00'	131.15'	98.52'	187.43'
C12	45.00°	S 01°13' W	273.00'	131.15'	98.52'	187.43'
C13	45.00°	S 01°13' W	273.00'	131.15'	98.52'	187.43'
C14	45.00°	S 01°13' W	273.00'	131.15'	98.52'	187.43'
C15	45.00°	S 01°13' W	273.00'	131.15'	98.52'	187.43'
C16	45.00°	S 01°13' W	273.00'	131.15'	98.52'	187.43'
C17	45.00°	S 01°13' W	273.00'	131.15'	98.52'	187.43'
C18	45.00°	S 01°13' W	273.00'	131.15'	98.52'	187.43'
C19	45.00°	S 01°13' W	273.00'	131.15'	98.52'	187.43'
C20	45.00°	S 01°13' W	273.00'	131.15'	98.52'	187.43'

McANGUS SURVEYING CO.
 1101 HWY. 360, SOUTH, E-230
 AUSTIN, TEXAS 78746
 (512) 328 - 9302

MISC FILM CODE
 00009501559

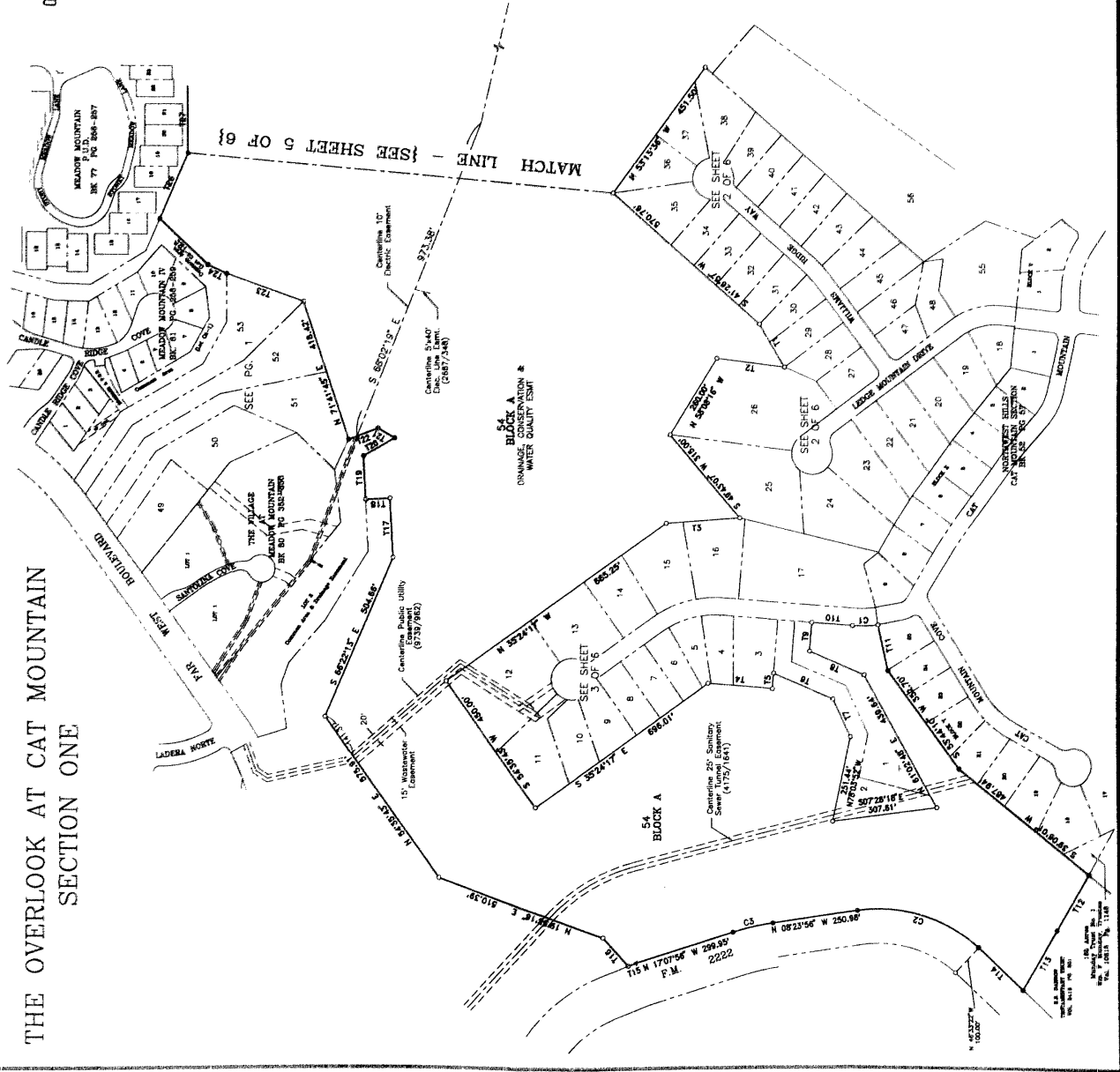


SCALE: 1" = 200'

LEGEND

- 1/2-INCH IRON ROD FOUND
- 1/2-INCH IRON ROD SET
- CONCRETE MONUMENT FOUND
- ▲ NAIL FOUND
- ▲ DRAINAGE EASEMENT
- PUBLIC UTILITY EASEMENT

THE OVERLOOK AT CAT MOUNTAIN
 SECTION ONE



TANGENT TABLE

T1	144.237	S 59°14'21\"	W	5
T2	200.000	N 0°14'21\"	W	6
T3	180.000	S 04°27'15\"	W	7
T4	160.000	S 08°30'10\"	W	8
T5	140.000	S 12°33'05\"	W	9
T6	120.000	S 16°35'59\"	W	10
T7	100.000	S 20°38'54\"	W	11
T8	80.000	S 24°41'49\"	W	12
T9	60.000	S 28°44'43\"	W	13
T10	40.000	S 32°47'38\"	W	14
T11	20.000	S 36°50'32\"	W	15
T12	18.000	N 58°52'58\"	W	16
T13	500.000	N 59°48'00\"	W	17
T14	500.000	N 59°48'00\"	W	18
T15	500.000	N 59°48'00\"	W	19
T16	500.000	N 59°48'00\"	W	20
T17	500.000	N 59°48'00\"	W	21
T18	500.000	N 59°48'00\"	W	22
T19	500.000	N 59°48'00\"	W	23
T20	500.000	N 59°48'00\"	W	24
T21	500.000	N 59°48'00\"	W	25
T22	500.000	N 59°48'00\"	W	26
T23	500.000	N 59°48'00\"	W	27
T24	500.000	N 59°48'00\"	W	28
T25	500.000	N 59°48'00\"	W	29
T26	500.000	N 59°48'00\"	W	30
T27	500.000	N 59°48'00\"	W	31
T28	500.000	N 59°48'00\"	W	32
T29	500.000	N 59°48'00\"	W	33
T30	500.000	N 59°48'00\"	W	34
T31	500.000	N 59°48'00\"	W	35
T32	500.000	N 59°48'00\"	W	36
T33	500.000	N 59°48'00\"	W	37
T34	500.000	N 59°48'00\"	W	38
T35	500.000	N 59°48'00\"	W	39
T36	500.000	N 59°48'00\"	W	40
T37	500.000	N 59°48'00\"	W	41
T38	500.000	N 59°48'00\"	W	42
T39	500.000	N 59°48'00\"	W	43
T40	500.000	N 59°48'00\"	W	44
T41	500.000	N 59°48'00\"	W	45
T42	500.000	N 59°48'00\"	W	46
T43	500.000	N 59°48'00\"	W	47
T44	500.000	N 59°48'00\"	W	48
T45	500.000	N 59°48'00\"	W	49
T46	500.000	N 59°48'00\"	W	50
T47	500.000	N 59°48'00\"	W	51
T48	500.000	N 59°48'00\"	W	52
T49	500.000	N 59°48'00\"	W	53
T50	500.000	N 59°48'00\"	W	54
T51	500.000	N 59°48'00\"	W	55
T52	500.000	N 59°48'00\"	W	56

CURVE TABLE

NO.	DETA.	ON BEARING	RADIUS	ARC	TAN	CHORD
1	125.14	S 88°22'15\"	100.00	17.11	17.11	34.22
2	125.14	S 88°22'15\"	100.00	17.11	17.11	34.22
3	125.14	S 88°22'15\"	100.00	17.11	17.11	34.22
4	125.14	S 88°22'15\"	100.00	17.11	17.11	34.22
5	125.14	S 88°22'15\"	100.00	17.11	17.11	34.22
6	125.14	S 88°22'15\"	100.00	17.11	17.11	34.22
7	125.14	S 88°22'15\"	100.00	17.11	17.11	34.22
8	125.14	S 88°22'15\"	100.00	17.11	17.11	34.22
9	125.14	S 88°22'15\"	100.00	17.11	17.11	34.22
10	125.14	S 88°22'15\"	100.00	17.11	17.11	34.22
11	125.14	S 88°22'15\"	100.00	17.11	17.11	34.22
12	125.14	S 88°22'15\"	100.00	17.11	17.11	34.22
13	125.14	S 88°22'15\"	100.00	17.11	17.11	34.22
14	125.14	S 88°22'15\"	100.00	17.11	17.11	34.22
15	125.14	S 88°22'15\"	100.00	17.11	17.11	34.22
16	125.14	S 88°22'15\"	100.00	17.11	17.11	34.22
17	125.14	S 88°22'15\"	100.00	17.11	17.11	34.22
18	125.14	S 88°22'15\"	100.00	17.11	17.11	34.22
19	125.14	S 88°22'15\"	100.00	17.11	17.11	34.22
20	125.14	S 88°22'15\"	100.00	17.11	17.11	34.22
21	125.14	S 88°22'15\"	100.00	17.11	17.11	34.22
22	125.14	S 88°22'15\"	100.00	17.11	17.11	34.22
23	125.14	S 88°22'15\"	100.00	17.11	17.11	34.22
24	125.14	S 88°22'15\"	100.00	17.11	17.11	34.22
25	125.14	S 88°22'15\"	100.00	17.11	17.11	34.22
26	125.14	S 88°22'15\"	100.00	17.11	17.11	34.22
27	125.14	S 88°22'15\"	100.00	17.11	17.11	34.22
28	125.14	S 88°22'15\"	100.00	17.11	17.11	34.22
29	125.14	S 88°22'15\"	100.00	17.11	17.11	34.22
30	125.14	S 88°22'15\"	100.00	17.11	17.11	34.22
31	125.14	S 88°22'15\"	100.00	17.11	17.11	34.22
32	125.14	S 88°22'15\"	100.00	17.11	17.11	34.22
33	125.14	S 88°22'15\"	100.00	17.11	17.11	34.22
34	125.14	S 88°22'15\"	100.00	17.11	17.11	34.22
35	125.14	S 88°22'15\"	100.00	17.11	17.11	34.22
36	125.14	S 88°22'15\"	100.00	17.11	17.11	34.22
37	125.14	S 88°22'15\"	100.00	17.11	17.11	34.22
38	125.14	S 88°22'15\"	100.00	17.11	17.11	34.22
39	125.14	S 88°22'15\"	100.00	17.11	17.11	34.22
40	125.14	S 88°22'15\"	100.00	17.11	17.11	34.22
41	125.14	S 88°22'15\"	100.00	17.11	17.11	34.22
42	125.14	S 88°22'15\"	100.00	17.11	17.11	34.22
43	125.14	S 88°22'15\"	100.00	17.11	17.11	34.22
44	125.14	S 88°22'15\"	100.00	17.11	17.11	34.22
45	125.14	S 88°22'15\"	100.00	17.11	17.11	34.22
46	125.14	S 88°22'15\"	100.00	17.11	17.11	34.22
47	125.14	S 88°22'15\"	100.00	17.11	17.11	34.22
48	125.14	S 88°22'15\"	100.00	17.11	17.11	34.22
49	125.14	S 88°22'15\"	100.00	17.11	17.11	34.22
50	125.14	S 88°22'15\"	100.00	17.11	17.11	34.22
51	125.14	S 88°22'15\"	100.00	17.11	17.11	34.22
52	125.14	S 88°22'15\"	100.00	17.11	17.11	34.22
53	125.14	S 88°22'15\"	100.00	17.11	17.11	34.22
54	125.14	S 88°22'15\"	100.00	17.11	17.11	34.22
55	125.14	S 88°22'15\"	100.00	17.11	17.11	34.22
56	125.14	S 88°22'15\"	100.00	17.11	17.11	34.22

McANGUS SURVEYING
 COMPANY, INC.
 1101 HWY 860 SOUTH, E-280
 AUSTIN, TEXAS 78746
 (612)589-8502

MISC FILM CODE
 00009501560

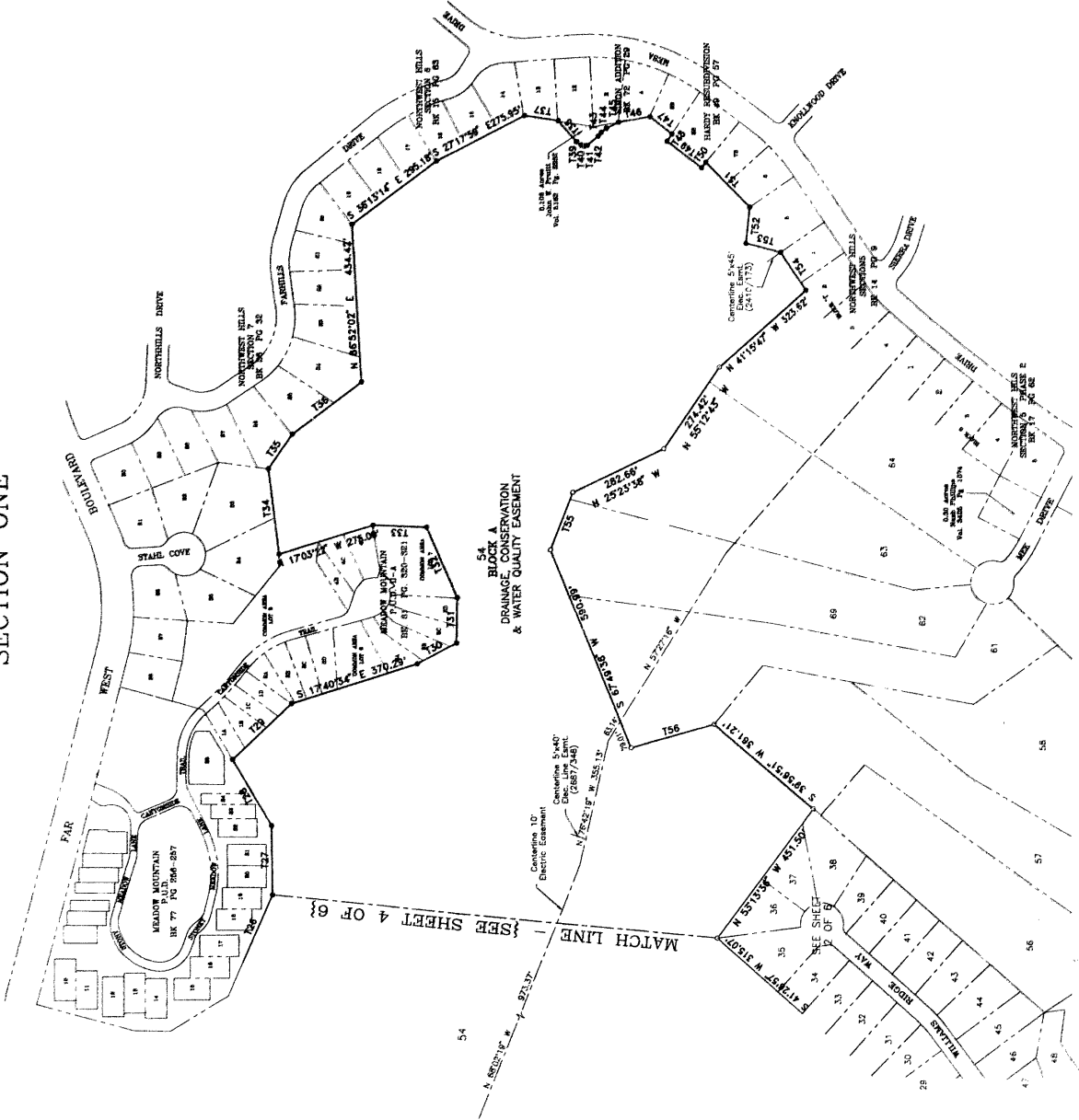
THE OVERLOOK AT CAT MOUNTAIN
 SECTION ONE



SCALE: 1" = 200'

LEGEND

- 1/2-INCH IRON ROD FOUND
- 1/2-INCH IRON ROD SET
- ◐ CONCRETE MONUMENT FOUND
- ◑ NAIL FOUND
- DRAINAGE EASEMENT
- PUBLIC UTILITY EASEMENT



TANGENT TABLE

LINE	DIST	BEARING
T26	206.74'	S 65°11'11"
T27	191.97'	N 89°33'25"
T28	227.81'	S 43°07'35"
T29	227.81'	S 28°02'26"
T30	125.08'	S 86°49'40"
T31	125.70'	N 01°40'24"
T32	150.00'	N 53°11'45"
T33	236.34'	S 36°20'52"
T34	116.75'	S 56°52'55"
T35	95.00'	S 09°33'11"
T36	76.45'	S 49°43'39"
T37	83.31'	S 17°41'09"
T38	83.31'	S 08°57'25"
T39	82.26'	S 27°49'52"
T40	40.41'	S 37°26'43"
T41	17.47'	S 57°26'43"
T42	38.20'	S 27°26'52"
T43	27.05'	S 57°26'52"
T44	24.39'	S 55°39'56"
T45	118.70'	S 37°00'04"
T46	172.37'	S 44°48'53"
T47	100.00'	N 83°48'33"
T48	98.20'	S 43°21'44"
T49	171.04'	N 59°16'33"
T50	242.26'	S 15°49'37"

McANUGUS SURVEYING
 COMPANY, INC.
 1101 HWY. 360, SOUTH, E-230
 AUSTIN, TEXAS 78746
 (512) 938-9302

PAGE 5 of 6 JOB No. 92-110
 1/22/94 c8-93-0033.01.1A

