



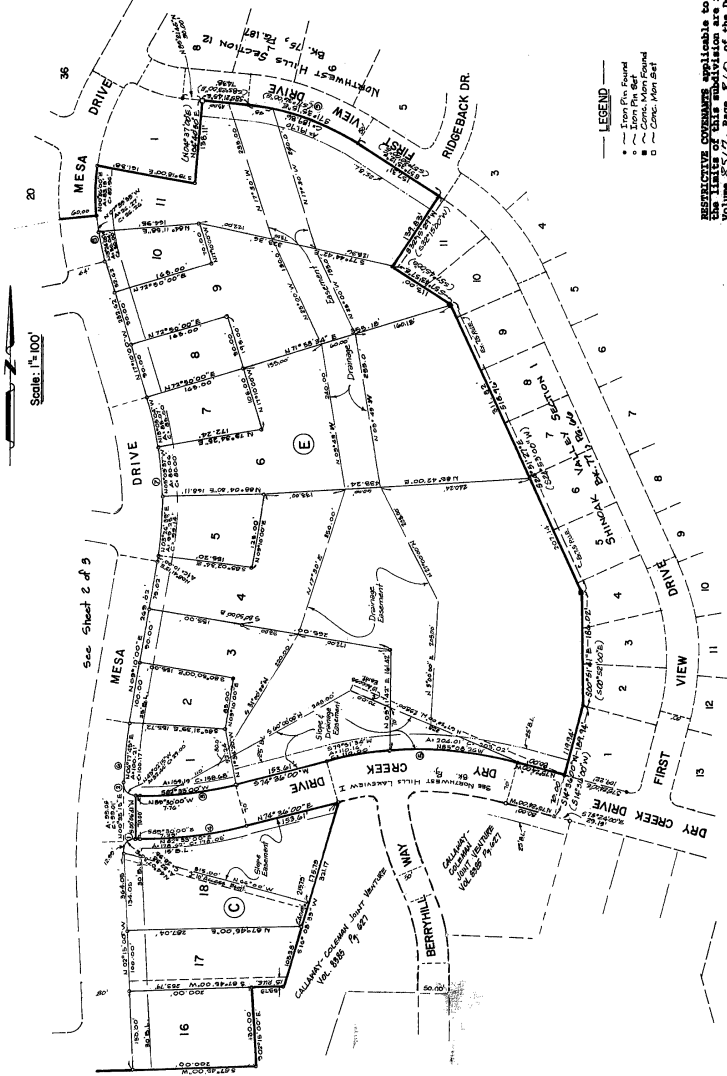


# NORTHWEST HILLS LAKEVIEW II

**CURVE DATA:**

①	②	③	④	⑤	⑥	⑦	⑧
I. 27°46'00"	91°55'51"	15°54'00"	90°40'00"	11°25'00"	26°20'00"	11°25'00"	36°20'00"
R. 10.00'	30.00'	575.45'	645.45'	530.00'	597.00'	597.00'	360.70'
T. 20.99'	31.05'	89.85'	142.01'	98.96'	98.46'	98.46'	38.20'
A. 32.96'	33.44'	158.74'	214.35'	194.93'	217.97'	217.97'	76.17'
C. 18.26'	25.00'	158.42'	178.05'	194.93'	217.97'	217.97'	76.17'

I. 27°25'00"	27°25'00"
R. 296.45'	296.45'
T. 191.70'	191.70'
A. 191.70'	191.70'
C. 193.86'	193.86'



**LEGEND**

- Iron Pin Found
- Iron Pin Set
- Marked
- Corner Mark Set

RESPECTIVE CONVEYANCES applicable to the land within the limits of this subdivision are recorded in Public Records, Travis County, Texas.

**Maintenance Note For Stormwater Detention Facility:**  
 The responsibility for maintenance of the stormwater detention facility lies with the owner of the lot on which the facility is located. A Stormwater Detention Facility Maintenance Agreement will be executed by the owner of the lot prior to issuance of any building permit or final acceptance of subdivision.

No dwelling space within this subdivision may be occupied until the lot and wastewater office approved by the State Health Department.

Project No. 60-075  
 Sheet 3  
 Jeryl Hart Engineers, Inc.  
 CONSULTING ENGINEERS  
 AUSTIN, TEXAS  
 JANUARY, 1954  
 Scale 1"=100'

88-79-21-03.2 (84)