

AL 20-8383 6513 * 51.00

SECOND AMENDMENT TO
CONDOMINIUM DECLARATION
FOR
SPICEWOOD POINT TOWNHOMES

3-27-2559

STATE OF TEXAS
COUNTY OF TRAVIS

KNOW ALL MEN BY THESE PRESENTS:

THAT, WHEREAS, SPICEWOOD ASSOCIATES, a Texas general partnership, hereinafter called "declarant", executed that certain condominium declaration for Spicewood Point Townhomes, hereinafter called "declaration", which declaration was recorded in Vol. 8131, Page 863 of the Condominium Records of Travis County, Texas; and

WHEREAS, declarant executed that certain First Amendment to Condominium Declaration for Spicewood Point Townhomes, which was recorded in Vol. 8149, Page 212 of the Condominium Records of Travis County, Texas; and

WHEREAS, the condominium declaration provides in Article VIII, Paragraph 8.2, that the declarant may amend the declaration without the joinder of any owner or mortgagee in order to correct any errors; and

WHEREAS, Exhibit "B", Description of Buildings, Parking Structures, Units, and Limited Common Elements, and Exhibit "C", Shares of Common Elements, Common Expenses, and Voting Limited Common Elements, through clerical error incorrectly numbered several of the units shown thereon; and

WHEREAS, it is the desire of declarant to correct this error in the declaration.

NOW THEREFORE, in consideration of the premises and in compliance with Paragraph 8.2 of the declaration, declarant hereby amends Exhibit "B" and Exhibit "C" attached to the declaration and to the First Amendment in their entirety to conform to the amended Exhibit "B" and Exhibit "C" attached hereto.

IN WITNESS WHEREOF declarant has caused this instrument to be signed this 19th day of July, 1983.

SPICEWOOD ASSOCIATES, A Texas general partnership

By: Joel E. Austin
Joel E. Austin, General Partner

STATE OF TEXAS
COUNTY OF BEXAR

The foregoing Second Amendment to Condominium Declaration for Spicewood Point Townhomes was acknowledged before me on the 19th day of July, 1983, by Joel E. Austin, General Partner of Spicewood Associates, a Texas general partnership, on behalf of the partnership.

NOTARY SEAL

Joy Willett
Notary Public in and for
State of Texas
Joy Willett

CONDOMINIUM RECORDS
TRAVIS COUNTY TEXAS

8161 . 501

EXHIBIT B
TO THE
CONDOMINIUM DECLARATION
FOR THE
SPICEWOOD POINT CONDOMINIUMS
(A Condominium)

3-27-2560

DESCRIPTION OF BUILDINGS, PARKING
STRUCTURES, UNITS, AND LIMITED COMMON ELEMENTS

- A. General Construction Detail. The buildings are or shall be constructed generally with concrete slab foundations; wood framing, gypcrete and plywood decking on the second floor; composition shingle roofing; wood siding and stone veneer; wood trim insulated metal doors, and aluminum windows and screens. Carport structures are or shall be constructed of steel columns and wood framing with a wood deck and built-up roofing. Paving is asphaltic, and walks are concrete; retaining walls are stone and railroad ties.
- B. Buildings. The ten buildings of the condominium are:
1. Building A. Building A has two stories and contains six (6) units, numbered (101), (202), (103), (204), (105), (206). All units are one bedroom flats, the building has a total area of 4926.18 s.f.
 2. Building B. Building B has two stories and contains six (6) units, numbered (107), (208), (109), (210), (111), (212). All units are one bedroom flats. The building has a total area 4226.18 s.f.
 3. Building C. Building C has two stories and contains three (3) units numbered (113), (114), (115). All units are two bedroom studios. The building has a total area of 3739.38 s.f.
 4. Building D. Building D has two stories and contains three (3) units numbered (116), (117), (118). All units are two bedroom studios. The building has a total area of 3739.38 s.f.
 5. Building E. Building E has two stories and contains nine (9) units, (119), (220), (121), (222), (123), (224), (125), (226), (127). Six units are one bedroom flats and three units are two bedroom flats. The building has a total area of 7745.81 s.f.
 6. Building F. Building F has two stories and contains eight (8) units numbered (128), (229), (130), (231), (132), (233), (134), (235). Four units are one bedroom flats and four units are two bedroom flats. The building has a total area of 6828.28 s.f.
 7. Building G. Building G has one story and contains three (3) units numbered (136), (137), (138). All units are two bedroom flats. The building has a total area of 3669.21 s.f.
 8. Building H. Building H has one story and contains the recreation room and supporting facilities and has a total area of 1392 s.f.
 9. Building I. Building I has two stories and contains six (6) units numbered (139), (140), (241), (142), (243), (144). All units are two bedroom flats. The building has a total area of 6609.34 s.f.

10. Building J. Building J has two stories and contains nine (9) units numbered (145), (146), (148), (150), (152), (247), (249), (251), (253). Six units are one bedroom flats and three units are two bedroom flats. The building has a total area of 7745.81 s.f.

C. Parking Structures. The parking structures, numbered G-1 through G-20, are described as follows:

1. All parking structures are constructed of steel columns, wood framing, wood siding and stone veneer with wood deck and builtup roofing. Listed below are the sizes and numbering of spaces for each structure.
2. G-1. 16'-0" wide and 20'-0" long, containing two spaces numbered 101 and 202.
3. G-2. 16'-0" wide and 38'-0" long, containing four spaces numbered 105, 206, 103, and 204.
4. G-3. 16'-0" wide and 56'-0" long, containing four spaces numbered 111, 212, 109, 210, 107 and 208.
5. G-4. 16'-0" wide and 46'-0" long containing five spaces numbered 118A, 118B, 117A, 117B, and 116A.
6. G-5. 16'-0" wide and 56'-0" long containing six spaces numbered 119, 220, 121, 222, 123 and 224.
7. G-6. 16'-0" wide and 56'-0" long containing six spaces numbered 226A, 226B, 125A, 125B, 127A and 127B.
8. G-7. 16'-0" wide and 38'-0" long containing four spaces numbered 128, 229, 130A and 130B.
9. G-8. 16'-0" wide and 38'-0" long containing four spaces numbered 233A, 233B, 134 and 235.
10. G-9. 16'-0" wide and 56'-0" long containing six spaces numbered 152, 253, 150, 251, 148 and 249.
11. G-10. 16'-0" wide and 20'-0" long containing two spaces numbered 145A and 145B.
12. G-11. 16'-0" wide and 38'-0" long containing four spaces numbered 146A, 146B, 247A and 247B.
13. G-12. 16'-0" wide and 38'-0" long containing four spaces numbered 140A, 140B, 241A and 241B.
14. G-13. 16'-0" wide and 38'-0" long containing four spaces numbered 142A, 142B, 243A and 243B.
15. G-14. 16'-0" wide and 20'-0" long containing two spaces numbered 144A and 144B.
16. G-15. 16'-0" wide and 56'-0" long containing six spaces numbered 115A, 115B, 114A, 114B, 113A, and 113B.
17. G-16. 16'-0" wide and 29'-0" long containing three spaces numbered 116B, 136A and 136B.
18. G-17. 16'-0" wide and 20'-0" long containing two spaces numbered 137A and 137B.
19. G-18. 16'-0" wide and 38'-0" long containing four spaces numbered 231A, 231B, 132A and 132B.
20. G-19. 16'-0" wide and 20'-0" long containing two spaces numbered 138A and 138B.

21. G-20. 16'-0" wide and 20'-0" long containing two spaces numbered 139A and 139B. 3-27-2562

D. Description of Units. Each of the fifty-three units in the condominium project is generally described below:

Unit No. 105. One story flat on the ground floor of Building A, containing 821.03 s.f. with one bedroom, living room, dining area, kitchen, den, one bath and closets.

Unit No. 206. One story flat on the second floor of Building A, containing 821.03 s.f. with one bedroom, living room, dining area, kitchen, den, one bath and closets.

Unit No. 103. One story flat on the ground floor of Building A, containing 821.03 s.f. with one bedroom, living room, dining area, kitchen, den, one bath and closets.

Unit No. 204. One story flat on the second floor of Building A, containing 821.03 s.f. with one bedroom, living room, dining area, kitchen, den, one bath and closets.

Unit No. 101. One story flat on the ground floor of Building A, containing 821.03 s.f. with one bedroom, living room, dining area, kitchen, den, one bath and closets.

Unit No. 202. One story flat on the second floor of Building A, containing 821.03 s.f. with one bedroom, living room, dining area, kitchen, den, one bath and closets.

Unit No. 111. One story flat on the ground floor of Building B, containing 821.03 s.f. with one bedroom, living room, dining area, kitchen, den, one bath and closets.

Unit No. 212. One story flat on the second floor of Building B, containing 821.03 s.f. with one bedroom, living room, dining area, kitchen, den, one bath and closets.

Unit No. 109. One story flat on the ground floor of Building B, containing 821.03 s.f. with one bedroom, living room, dining area, kitchen, den, one bath and closets.

Unit No. 210. One story flat on the second floor of Building B, containing 821.03 s.f. with one bedroom, living room, dining area, kitchen, den, one bath and closets.

Unit No. 107. One story flat on the ground floor of Building B, containing 821.03 s.f. with one bedroom, living room, dining area, kitchen, den, one bath and closets.

Unit No. 209. One story flat on the second floor of Building B, containing 821.03 s.f. with one bedroom, living room, dining area, kitchen, den, one bath and closets.

Unit No. 113. Two story studio in Building C, containing 1246.46 s.f. with two bedrooms, two baths, living room, dining area, kitchen, and closets.

Unit No. 114. Two story studio in Building C, containing 1246.46 s.f. with two bedrooms, two baths, living room, dining area, kitchen, and closets.

Unit No. 115. Two story studio in Building C, containing 1246.46 s.f. with two bedrooms, two baths, living room, dining area, kitchen, and closets.

Unit No. 116. Two story studio in Building D, containing 1246.46 s.f. with two bedrooms, two baths, living room, dining area, kitchen, and closets.

- Unit No. 117. Two story studio in Building D, containing 1246.46 s.f. with two bedrooms, two baths, living room, dining area, kitchen, and closets.
- Unit No. 118. Two story studio in Building D, containing 1246.46 s.f. with two bedrooms, two baths, living room, dining area, kitchen, and closets.
- Unit No. 119. One story flat on the ground floor of Building E, containing 740.19 s.f. with one bedroom, one bath, living room, dining area, kitchen, and closets.
- Unit No. 220. One story flat on the second floor of Building E, containing 740.19 s.f. with one bedroom, one bath, living room, dining area, kitchen, and closets.
- Unit No. 121. One story flat on the ground floor of Building E, containing 740.19 s.f. with one bedroom, one bath, living room, dining area, kitchen, and closets.
- Unit No. 222. One story flat on the second floor of Building E, containing 740.19 s.f. with one bedroom, one bath, living room, dining area, kitchen, and closets.
- Unit No. 123. One story flat on the ground floor of Building E containing 740.19 s.f. with one bedroom, one bath, living room, dining area, kitchen, and closets.
- Unit No. 224. One story flat on the second floor of Building E, containing 740.19 s.f. with one bedroom, one bath, living room, dining area, kitchen, and closets.
- Unit No. 125. One story flat on the ground floor of Building E, containing 1040.8 s.f. with two bedrooms, two baths, living room, dining area, kitchen, and closets.
- Unit No. 226. One story flat on the second floor of Building E, containing 1040.8 s.f. with two bedrooms, two baths, living room, dining area, kitchen, and closets.
- Unit No. 127. One story flat on the first floor of Building E, containing 1223.07 s.f. with two bedrooms, two baths, living room, dining area, den, kitchen, and closets.
- Unit No. 128. One story flat on the first floor of Building F, containing 666.27 s.f. with one bedroom, one bath, living room, dining room, kitchen, and closets.
- Unit No. 229. One story flat on the second floor of Building F, containing 666.27 s.f. with one bedroom, one bath, living room, dining room, kitchen, and closets.
- Unit No. 130. One story flat on the first floor of Building F, containing 1040.8 s.f. with two bedrooms, two baths, living room, dining room, kitchen, and closets.
- Unit No. 231. One story flat on the second floor of Building F, containing 1040.8 s.f. with two bedrooms, two baths, living room, dining room, kitchen, and closets.
- Unit No. 132. One story flat on the first floor of Building F, containing 1040.8 s.f. with two bedrooms, two baths, living room, dining room, kitchen, and closets.
- Unit No. 233. One story flat on the second floor of Building F, containing 1040.8 s.f. with two bedrooms, two baths, living room, dining room, kitchen, and closets.
- Unit No. 134. One story flat on the ground floor of Building F, containing 666.27 s.f. with one bedroom, one bath, living room, dining room, kitchen, and closets.
- Unit No. 235. One story flat on the second floor of Building F, containing 666.27 s.f. with one bedroom, one bath, living room, dining room, kitchen and closets.

Unit No. 136 . One story flat on the first floor of Building G, containing 1223.07 s.f. with two bedrooms, two baths, living room, dining area, den, kitchen, and closets.

Unit No. 137 . One story flat on the first floor of Building G, containing 1223.07 s.f. with two bedrooms, two baths, living room, dining area, den, kitchen, and closets.

Unit No. 138 . One story flat on the first floor of Building G, containing 1223.07 s.f. with two bedrooms, two baths, living room, dining area, den, kitchen, and closets.

Unit No. 139 . One story flat on the first floor of Building I, containing 1223.07 s.f. with two bedrooms, two baths, living room, dining area, den, kitchen, and closets.

Unit No. 140 . One story flat on the first floor of Building I, containing 1,040.80 s.f. with two bedrooms, two baths, living room, dining area, den, kitchen, and closets.

Unit No. 241 . One story flat on the second floor of Building I, containing 1040.80 s.f. with two bedrooms, two baths, living room, dining area, kitchen, and closets.

Unit No. 142 . One story flat on the first floor of Building I, containing 1040.80 s.f. with two bedrooms, two baths, living room, dining area, kitchen, and closets.

Unit No. 243 . One story flat on the second floor of Building I, containing 1040.80 s.f. with two bedrooms, two baths, living room, dining area, kitchen, and closets.

Unit No. 144 . One story flat on the first floor of Building I, containing 1223.07 s.f. with two bedrooms, two baths, living room, dining area, den, kitchen, and closets.

Unit No. 145 . One story flat on the first floor of Building J, containing 1223.07 s.f. with two bedrooms, two baths, living room, dining area, den, kitchen, and closets.

Unit No. 247 . One story flat on the second floor of Building J, containing 1040.80 s.f. with two bedrooms, two baths, living room, dining area, kitchen, and closets.

Unit No. 146 . One story flat on the first floor of Building J, containing 1040.80 s.f. with two bedrooms, two baths, living room, dining area, kitchen, and closets.

Unit No. 249 . One story flat on the second floor of Building J, containing 740.19 s.f. with one bedroom, one bath, living room, dining area, kitchen, and closets.

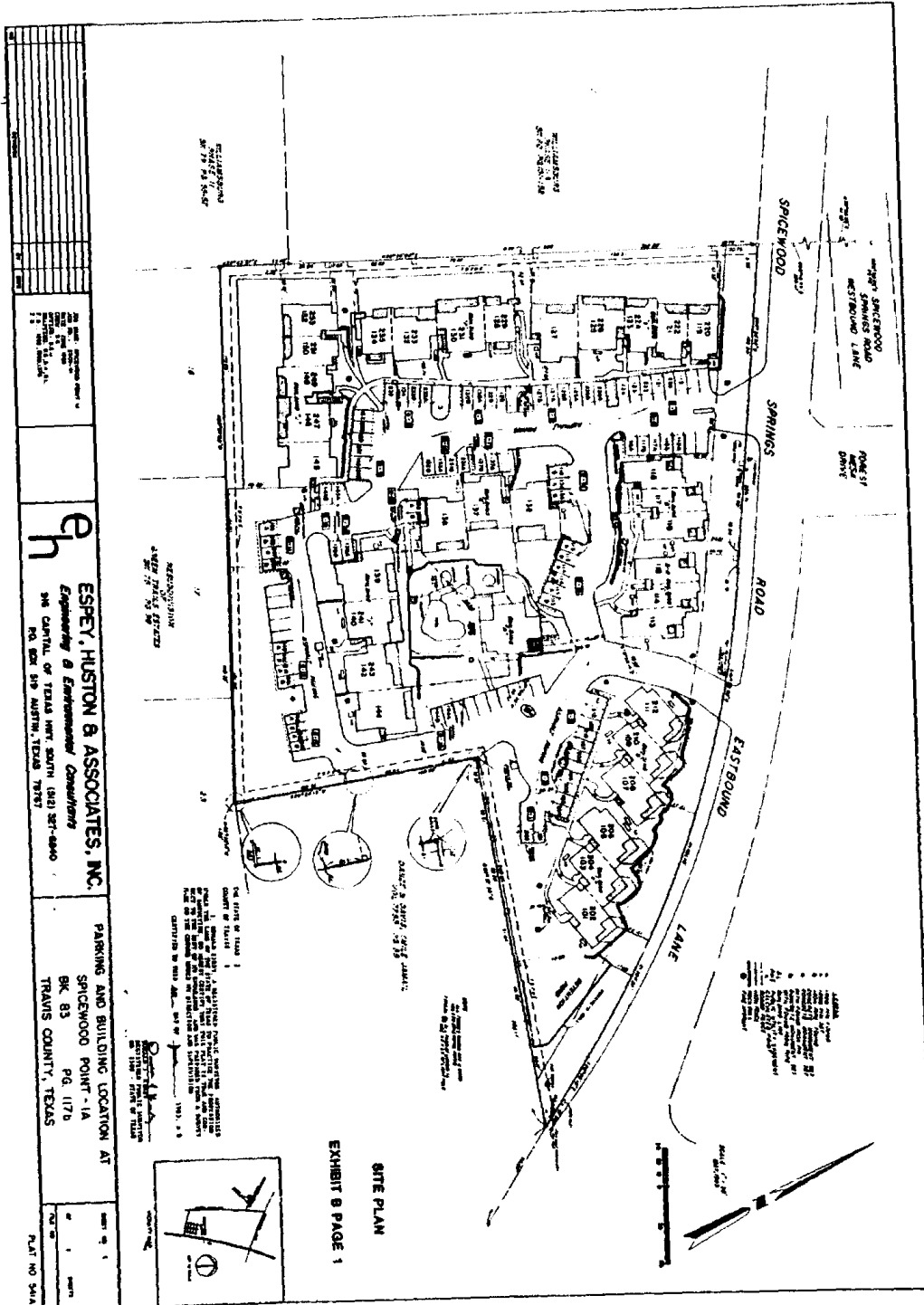
Unit No. 148 . One story flat on the first floor of Building J, containing 740.19 s.f. with one bedroom, one bath, living room, dining area, kitchen, and closets.

Unit No. 251 . One story flat on the second floor of Building J, containing 740.19 s.f. with one bedroom, one bath, living room, dining area, kitchen, and closets.

Unit No. 150 . One story flat on the first floor of Building J, containing 740.19 s.f. with one bedroom, one bath, living room, dining area, kitchen, and closets.

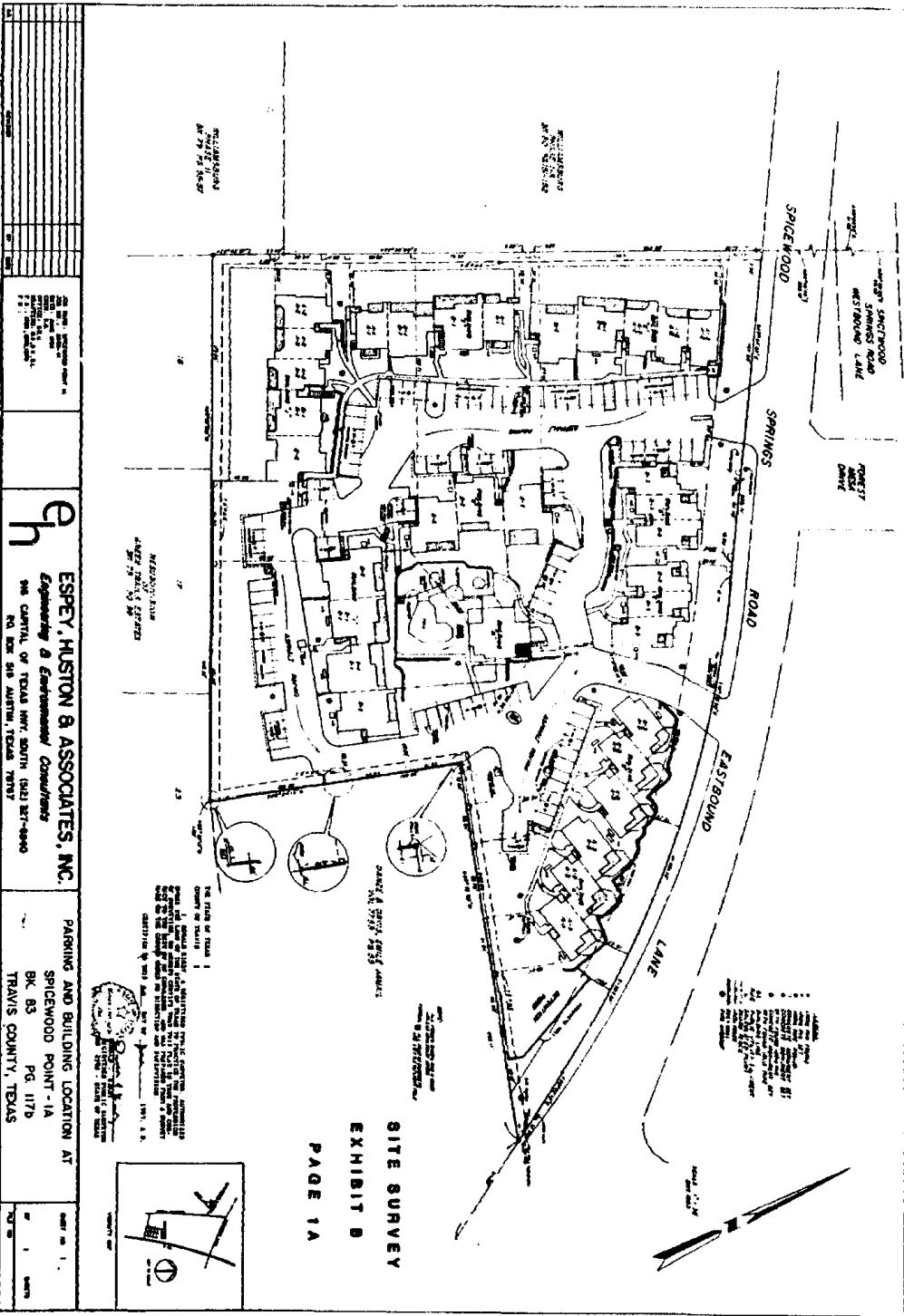
Unit No. 253 . One story flat on the second floor of Building J, containing 740.19 s.f. with one bedroom, one bath, living room, dining area, kitchen, and closets.

Unit No. 152 . One story flat on the first floor of Building J, containing 740.19 s.f. with one bedroom, one bath, living room, dining area, kitchen, and closets.



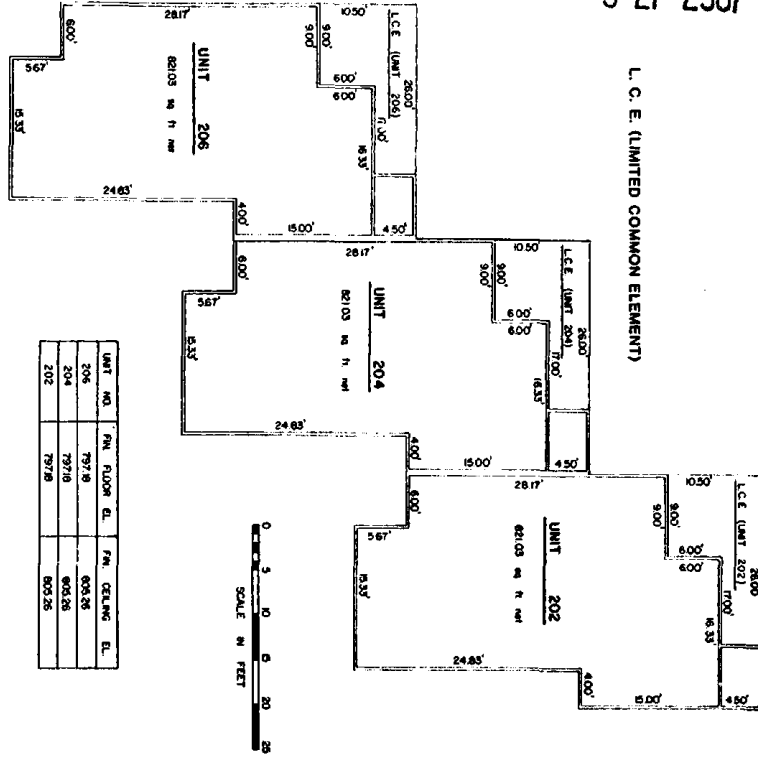
RECORDERS MEMORANDUM
 ALL OR PARTS OF THE TEXT ON THIS PAGE WAS NOT
 ADEQUATE FOR SATISFACTORY RECORDATION

8161 507



3-27-2567

BUILDING A SECOND FLOOR PLAN



BUILDING A FIRST FLOOR PLAN

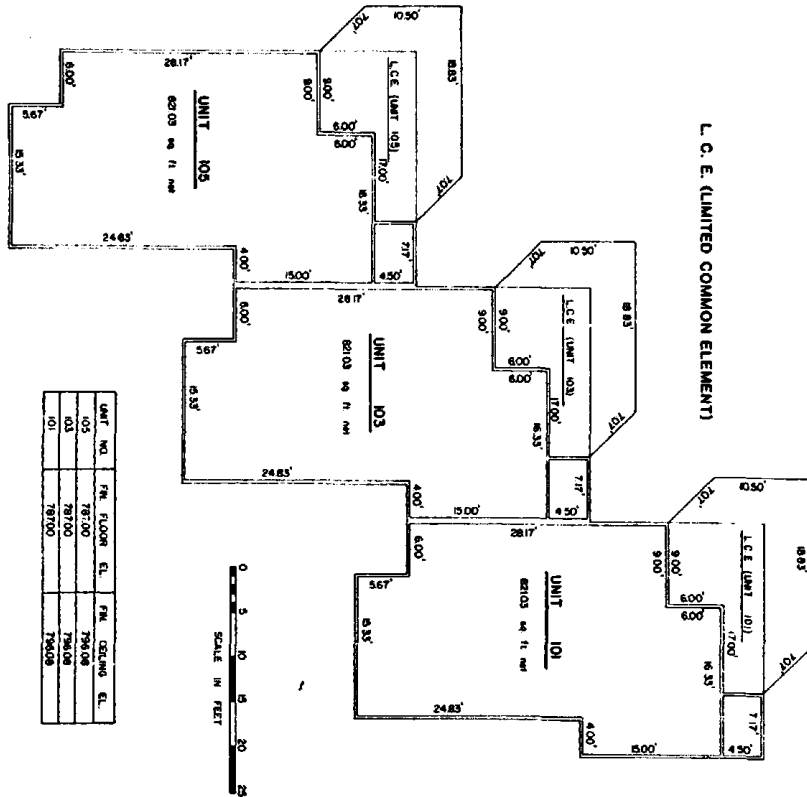
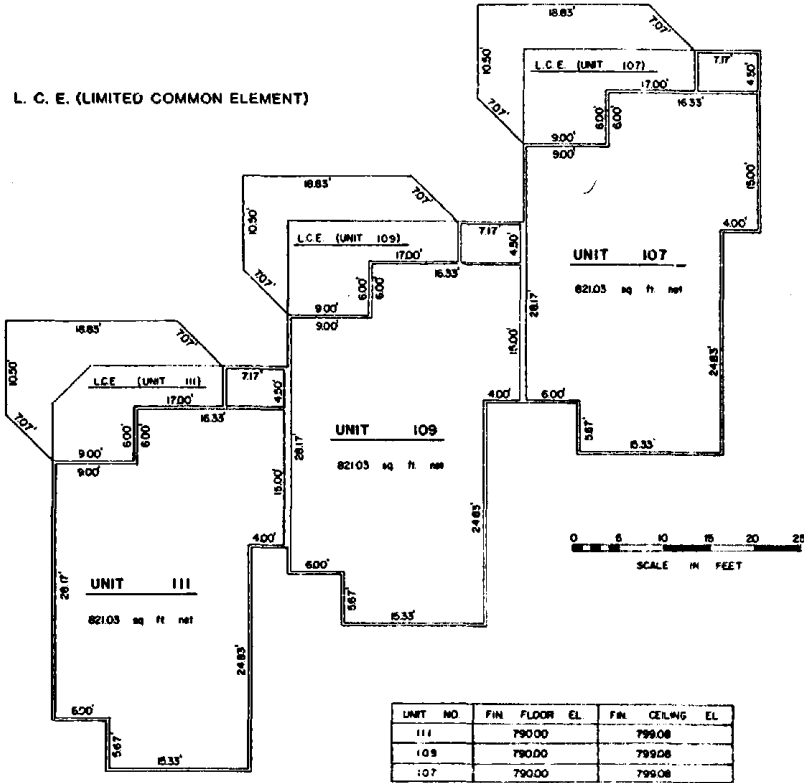


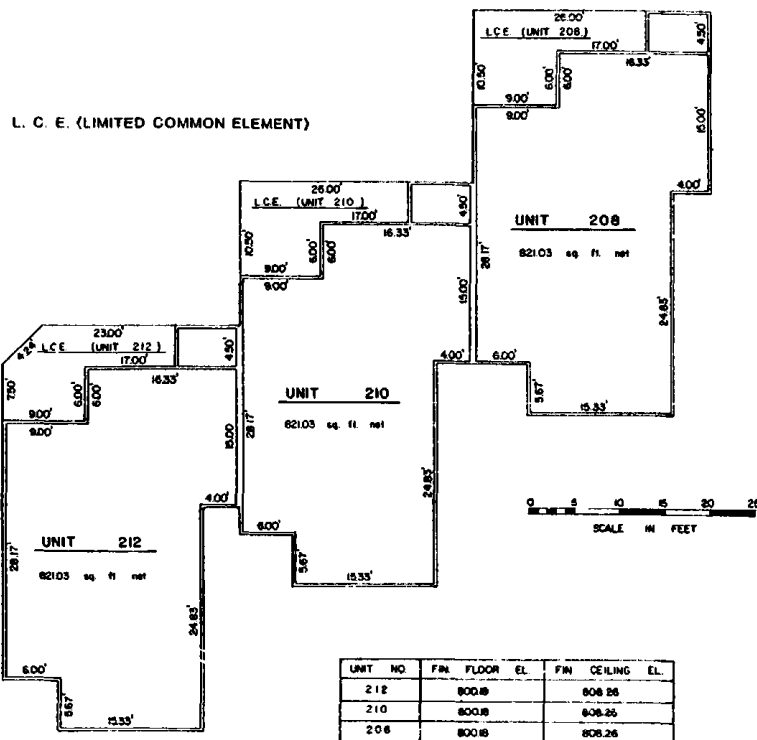
EXHIBIT B PAGE 2



BUILDING B FIRST FLOOR PLAN

EXHIBIT B PAGE 3

RECORDERS MEMORANDUM
ALL OR PARTS OF THE TEXT ON THIS PAGE WAS NOT
CLEARLY LEGIBLE FOR SATISFACTORY RECORDATION

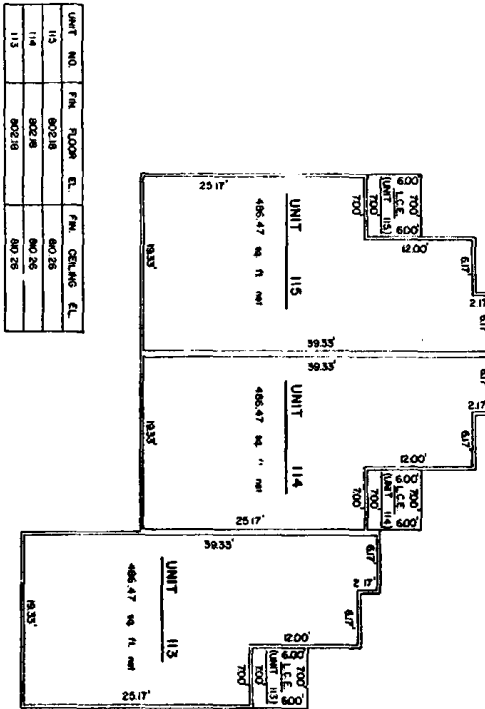


BUILDING B SECOND FLOOR PLAN

EXHIBIT B PAGE 4

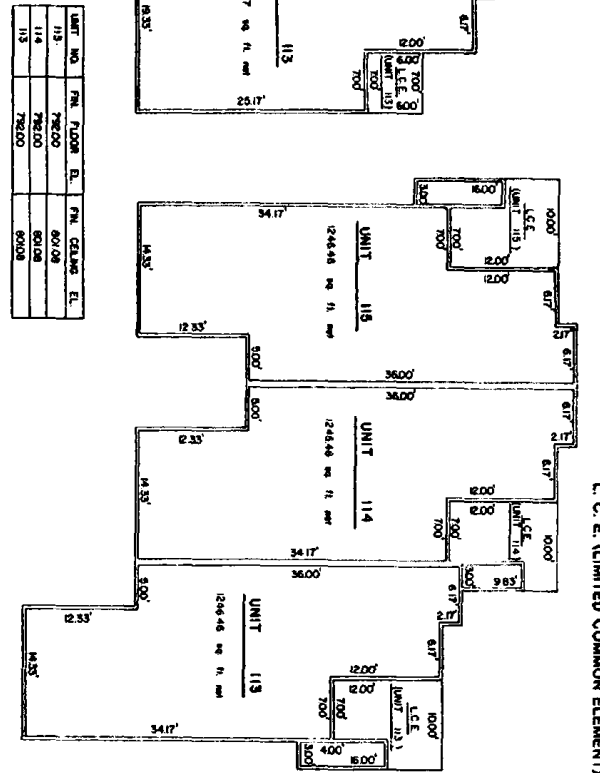
RECORDERS MEMORANDUM
 ALL OR PARTS OF THE TEXT ON THIS PAGE WAS NOT
 CLEARLY LEGIBLE FOR SATISFACTORY RECORDATION

L. C. E. (LIMITED COMMON ELEMENT)



UNIT NO.	FIN. FLOOR EL.	FIN. CEILING EL.
113	802.18	800.28
114	802.18	800.28
115	802.18	800.28

BUILDING C SECOND FLOOR PLAN



UNIT NO.	FIN. FLOOR EL.	FIN. CEILING EL.
113	798.00	800.08
114	798.00	800.08
118	798.00	800.08
119	798.00	800.08

BUILDING C FIRST FLOOR PLAN

L. C. E. (LIMITED COMMON ELEMENT)

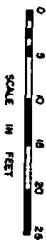
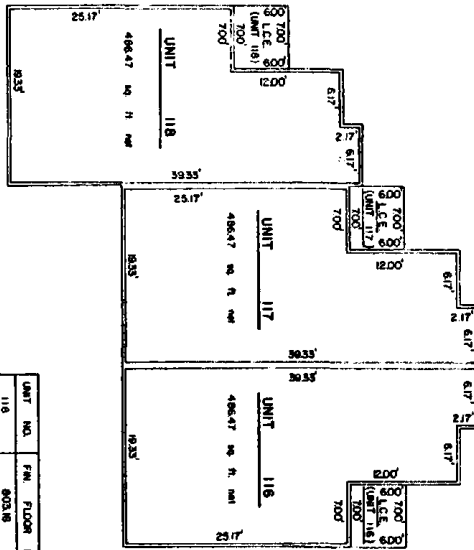


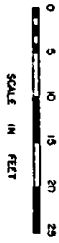
EXHIBIT B PAGE 5

RECORDERS MEMORANDUM
 ALL OR PARTS OF THE TEXT ON THIS PAGE WAS NOT
 CLEARLY LEGIBLE FOR SATISFACTORY RECORDATION

L. C. E. (LIMITED COMMON ELEMENT)

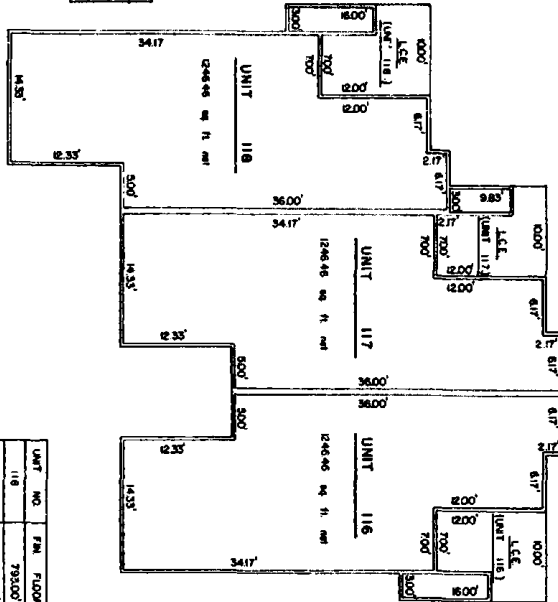


UNIT NO.	F.M. FLOOR EL.	F.M. CEILING EL.
116	802.18	811.28
117	802.18	812.5
118	802.18	812.5



BUILDING D SECOND FLOOR PLAN

L. C. E. (LIMITED COMMON ELEMENT)

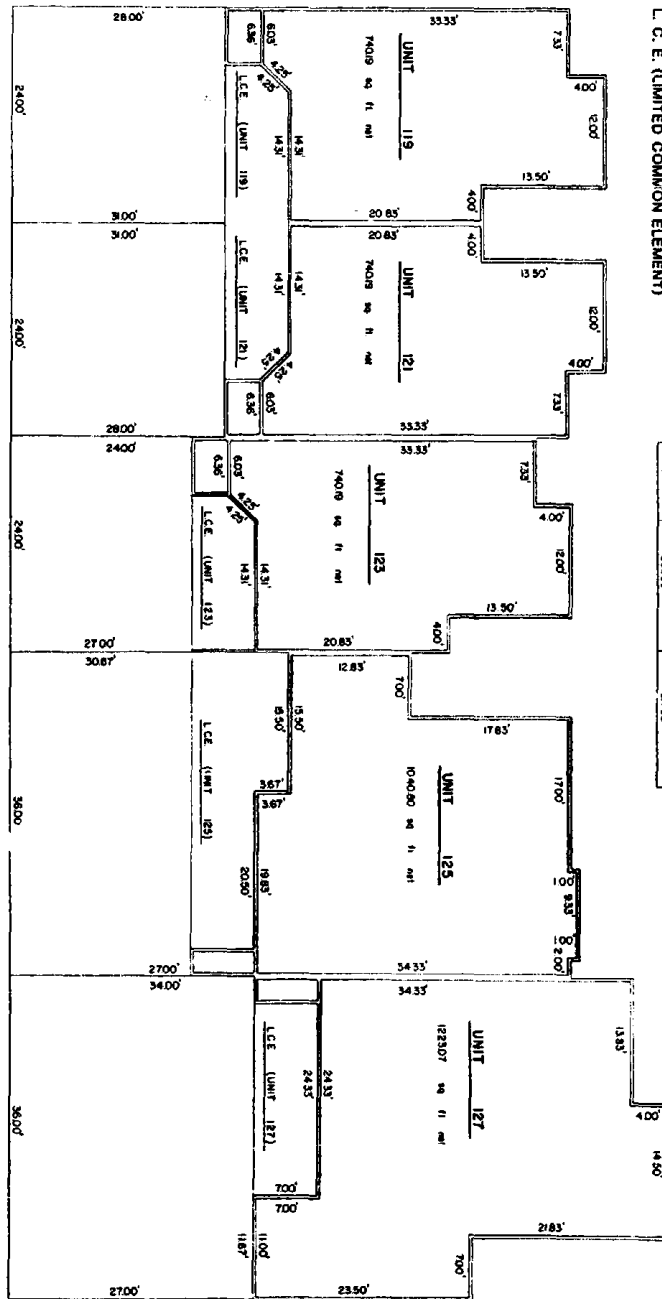


UNIT NO.	F.M. FLOOR EL.	F.M. CEILING EL.
116	793.00	802.06
117	793.00	802.06
118	793.00	802.06

BUILDING D FIRST FLOOR PLAN

RECORDERS MEMORANDUM
ALL OR PARTS OF THE TEXT ON THIS PAGE WAS NOT
CLEARLY LEGIBLE FOR SATISFACTORY RECORDATION

BUILDING E FIRST FLOOR PLAN



L. C. E. (LIMITED COMMON ELEMENT)

UNIT NO.	FIN. FLOOR SL.	FIN. CEILING SL.
119	786.00	804.08
121	786.00	804.08
123	786.00	807.08
125	786.00	807.08
127	802.00	811.08

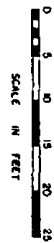
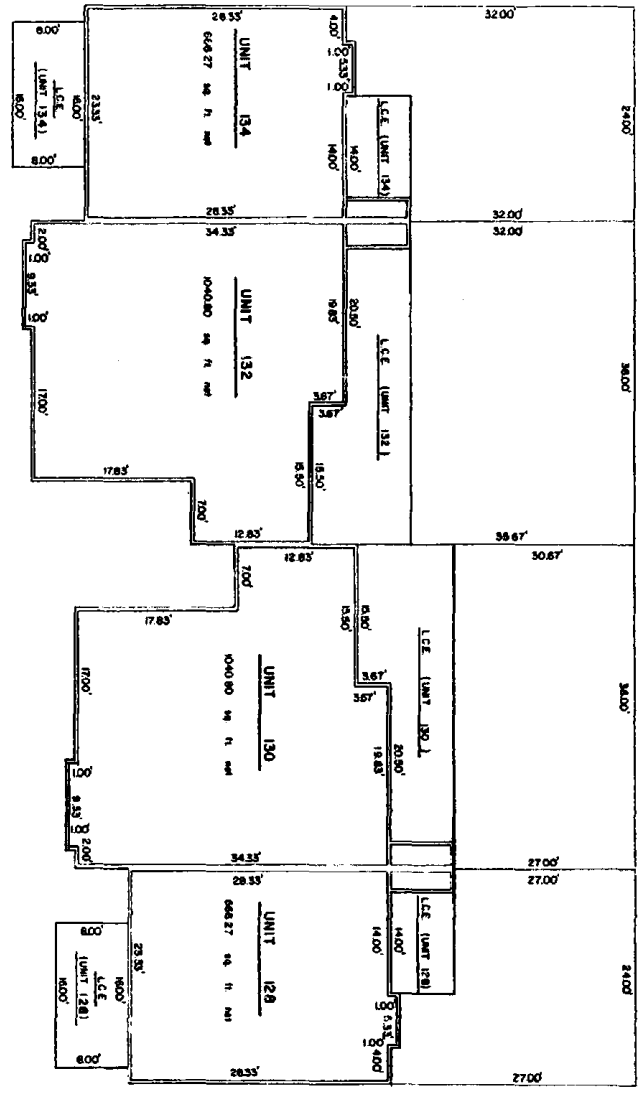


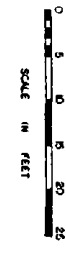
EXHIBIT B PAGE 7

RECORDERS MEMORANDUM
ALL OR PARTS OF THE TEXT ON THIS PAGE WAS NOT
CLEARLY LEGIBLE FOR SATISFACTORY RECORDATION

3-27-2574



L. C. E. (LIMITED COMMON ELEMENT)



BUILDING F FIRST FLOOR PLAN

UNIT NO.	FIR. FLOOR E.L.	FIN. CEILING E.L.
134	806.00'	815.08'
132	800.00'	809.08'
130	800.00'	809.08'
128	801.00'	820.08'

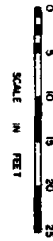
EXHIBIT B PAGE 9

RECORDERS MEMORANDUM
 ALL OR PARTS OF THE TEXT ON THIS PAGE WAS NOT
 CLEARLY LEGIBLE FOR SATISFACTORY RECORDATION

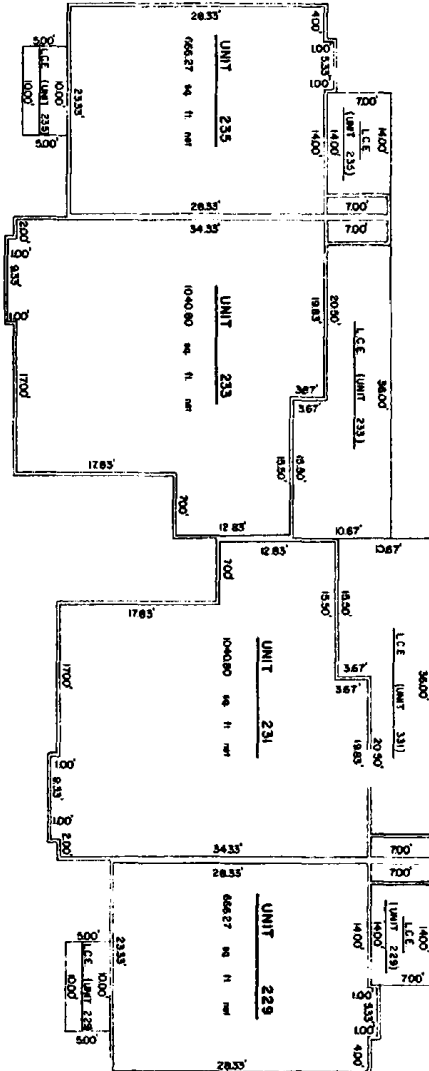
8161 . 516

3-27-2575

UNIT NO.	F.N. FLOOR EL.	F.N. CEILING EL.
235	8618	8647.5
231	8608	8638
229	8618	8628



L. G. E. (LIMITED COMMON ELEMENT)

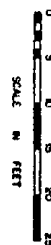


BUILDING F SECOND FLOOR PLAN

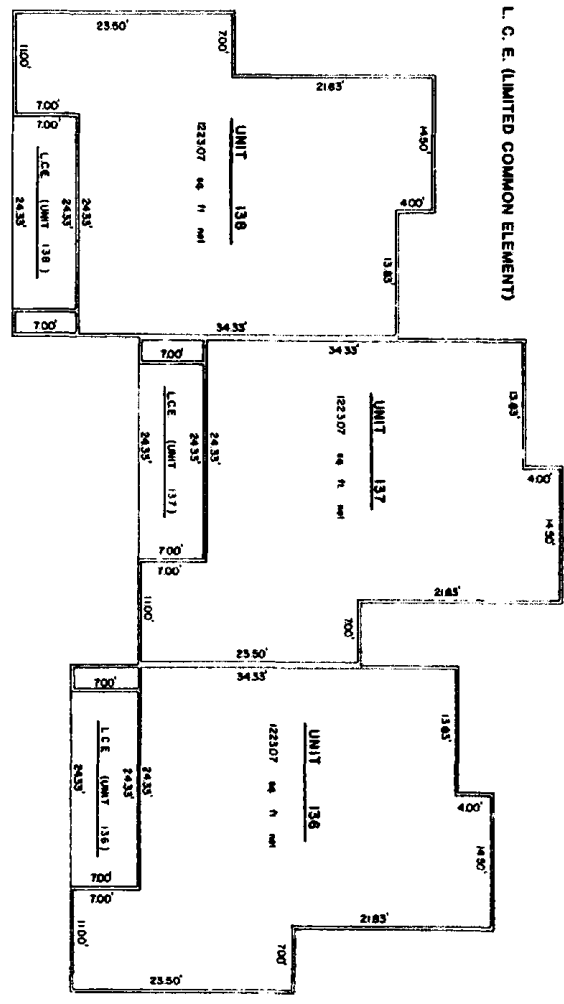
EXHIBIT B PAGE 10

RECORDERS MEMORANDUM
- 62 - ALL OR PARTS OF THE TEXT ON THIS PAGE WAS NOT
CLEARLY LEGIBLE FOR SATISFACTORY RECORDATION

8161 . 517



UNIT NO.	FIN. FLOOR EL.	FIN. CEILING EL.
136	800.00	809.08
137	802.50	811.58
138	809.00	814.08



L. C. E. (LIMITED COMMON ELEMENT)

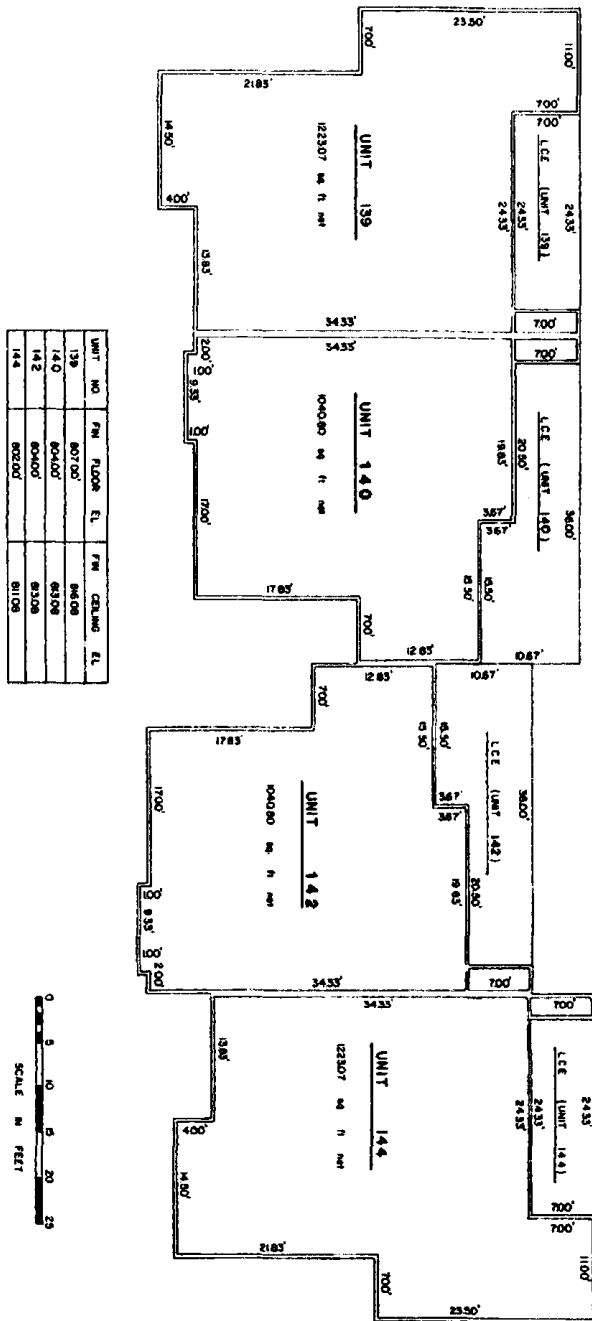
BUILDING G FIRST FLOOR PLAN

EXHIBIT B PAGE 11

RECORDERS MEMORANDUM
ALL OR PARTS OF THE TEXT ON THIS PAGE WAS NOT
CLEARLY LEGIBLE FOR SATISFACTORY RECORDATION

3-27-2577

BUILDING I FIRST FLOOR PLAN



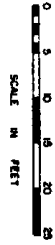
L. C. E. (LIMITED COMMON ELEMENT)

UNIT NO	FM	FLOOR	EL.	FM	CEILING	EL.
139	807.00'		810.0'			
140	804.00'		810.0'			
142	804.00'		810.0'			
144	802.00'		810.0'			

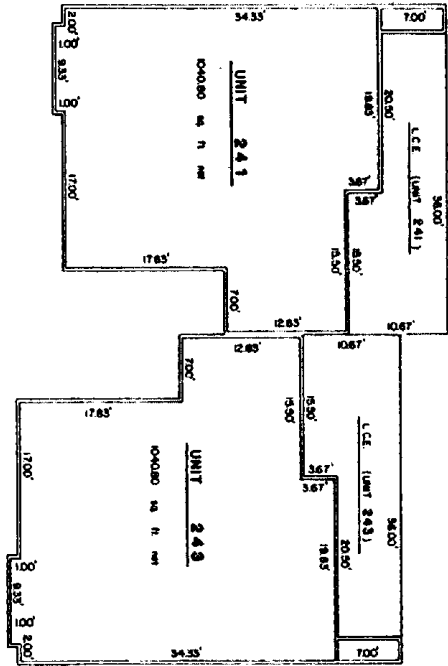


RECORDERS MEMORANDUM
 ALL OR PARTS OF THE TEXT ON THIS PAGE WAS NOT
 CLEARLY LEGIBLE FOR SATISFACTORY RECORDATION

3-27-2578



UNIT NO.	FIN. FLOOR EL.	FIN. CEILING EL.
241	844.8	852.25
243	844.8	852.25



L. C. E. (LIMITED COMMON ELEMENT)

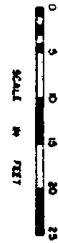
BUILDING I SECOND FLOOR PLAN

EXHIBIT B PAGE 13

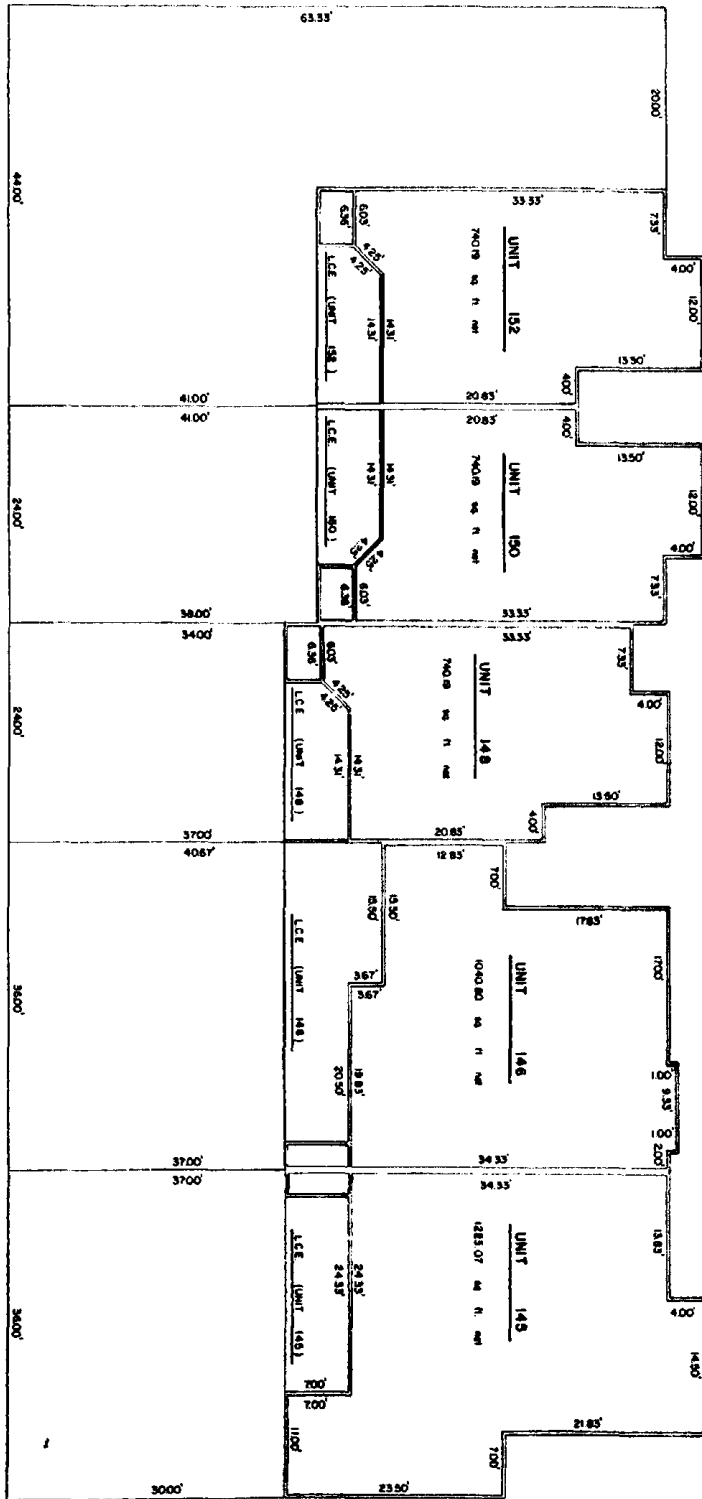
RECORDERS MEMORANDUM
ALL OR PARTS OF THE TEXT ON THIS PAGE WAS NOT
CLEARLY LEGIBLE FOR SATISFACTORY RECORDATION

3-27-2579

UNIT NO.	FIN. FLOOR EL.	FIN. CEILING EL.
152	81700	82800
150	81700	82800
148	81700	82800
146	81700	82800
145	82300	82300



L. C. E. (LIMITED COMMON ELEMENT)



BUILDING J FIRST FLOOR PLAN

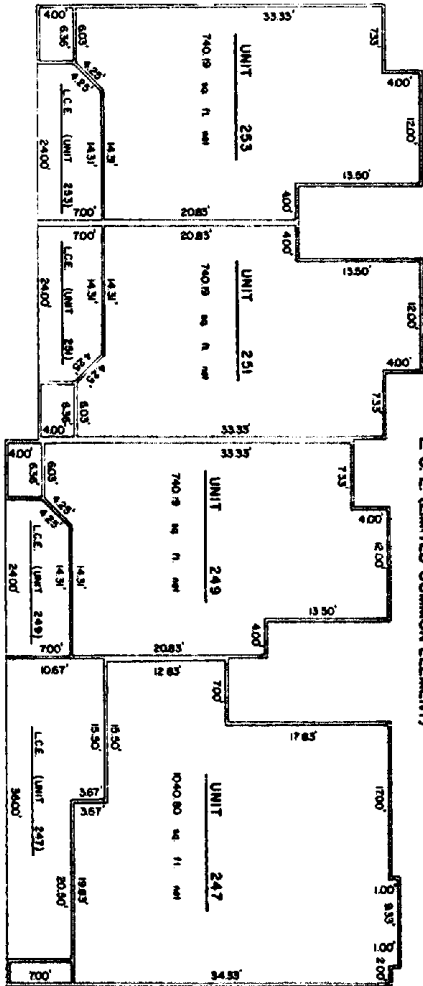
EXHIBIT B PAGE 14

RECORDERS MEMORANDUM
ALL OR PARTS OF THE TEXT ON THIS PAGE WAS NOT
CLEARLY LEGIBLE FOR SATISFACTORY RECORDATION

8161 . 521



UNIT NO.	FIN. FLOOR EL.	FIN. CEILING EL.
253	827.48	833.28
251	827.48	833.28
249	825.48	831.28
247	823.48	829.28



BUILDING J SECOND FLOOR PLAN

EXHIBIT B PAGE 15

RECORDERS MEMORANDUM
ALL OR PARTS OF THE TEXT ON THIS PAGE WAS NOT
CLEARLY LEGIBLE FOR SATISFACTORY RECORDATION

EXHIBIT C
TO THE
CONDOMINIUM DECLARATION
FOR THE
SPICEWOOD POINT CONDOMINIUMS
(A Condominium)

3-27-2581

SHARES OF COMMON ELEMENTS, COMMON EXPENSES, AND VOTING
LIMITED COMMON ELEMENTS

A. Shares of Common Elements, Common Expenses and Voting

<u>Unit</u>	<u>Percentage</u>
101	1.6444
202	1.6444
103	1.6444
204	1.6444
105	1.6444
206	1.6444
107	1.6444
208	1.6444
109	1.6444
210	1.6444
111	1.6444
212	1.6444
113	2.4964
114	2.4964
115	2.4964
116	2.4964
117	2.4964
118	2.4964
119	1.4825
220	1.4825
121	1.4825
222	1.4825
123	1.4825
224	1.4825
125	2.0845
226	2.0845
127	2.4496
128	1.3344
229	1.3344
130	2.0845
231	2.0845
132	2.0845
233	2.0845
134	1.3344
235	1.3344
136	2.4496
137	2.4496
138	2.4496
139	2.4496
140	2.0845
241	2.0845
142	2.0845
243	2.0845
144	2.4496
145	2.4496
146	2.0845
247	2.0845
148	1.4825
249	1.4825
150	1.4825
251	1.4825
152	1.4825
253	1.4825
	<u>100.0000</u>

8161 . 523

B. Limited Common Elements

3-27-2582

Unit No. 101 Patio area and parking space 101.
Unit No. 202 Balcony and parking space 202.
Unit No. 103 Patio area and parking space 103.
Unit No. 204 Balcony and parking space 204.
Unit No. 105 Patio area and parking space 105.
Unit No. 206 Balcony and parking space 206.
Unit No. 107 Patio area and parking space 107.
Unit No. 208 Balcony and parking space 208.
Unit No. 109 Patio area and parking space 109.
Unit No. 210 Balcony and parking space 210.
Unit No. 111 Patio area and parking space 111.
Unit No. 212 Balcony and parking space 212.
Unit No. 113 Patio area and parking spaces 113A and 113B.
Unit No. 114 Patio area and parking spaces 114A and 114B.
Unit No. 115 Patio area and parking spaces 115A and 115B.
Unit No. 116 Patio area and parking spaces 116A and 116B.
Unit No. 117 Patio area and parking spaces 117A and 117B.
Unit No. 118 Patio area and parking spaces 118A and 118B.
Unit No. 119 Patio area and parking space 119.
Unit No. 220 Balcony and parking space 220.
Unit No. 121 Patio area and parking space 121.
Unit No. 222 Balcony and parking space 222.
Unit No. 123 Patio area and parking space 123.
Unit No. 224 Balcony and parking space 224.
Unit No. 125 Patio area and parking spaces 125A and 125B.
Unit No. 226 Balcony and parking spaces 226A and 226B.
Unit No. 127 Patio area and parking spaces 127A and 127B.
Unit No. 128 Patio area and parking space 128.
Unit No. 229 Balcony area and parking space 229.
Unit No. 130 Patio area and parking spaces 130A and 130B.
Unit No. 231 Balcony and parking spaces 231A and 231B.
Unit No. 132 Patio area and parking spaces 132A and 132B.
Unit No. 233 Balcony and parking spaces 233A and 233B.
Unit No. 134 Patio area and parking space 134.
Unit No. 235 Balcony and parking space 235.

8161 524

3-27-2583

- Unit No. 136 Patio area and parking spaces 136A and 136B.
- Unit No. 137 Patio and parking space 137A and 137B.
- Unit No. 138 Patio area and parking spaces 138A and 138B.
- Unit No. 139 Patio area and parking spaces 139A and 139B.
- Unit No. 140 patio and parking spaces 140A and 140B.
- Unit No. 241 Balcony area and parking spaces 241A and 241B.
- Unit No. 142 Patio and parking spaces 142A and 142B.
- Unit No. 243 Balcony area and parking spaces 243A and 243B.
- Unit No. 144 Patio area and parking spaces 144A and 144B.
- Unit No. 145 Patio area and parking spaces 145A and 145B.
- Unit No. 146 Patio and parking spaces 146A and 146B.
- Unit No. 247 Balcony area and parking spaces 247A and 247B.
- Unit No. 148 Patio and parking space 148.
- Unit No. 249 Balcony area and parking space 249.
- Unit No. 150 Patio and parking space 150.
- Unit No. 251 Balcony area and parking space 251.
- Unit No. 152 Patio and parking space 152.
- Unit No. 253 Balcony area and parking space 253.

FILED
 Jul 21 5 44 AM '83
Doris Angeline
 COUNTY CLERK
 TRAVIS COUNTY, TEXAS

STATE OF TEXAS COUNTY OF TRAVIS
 I hereby certify that this instrument was filed on the
 date and at the time stamped hereon by me, and was duly
 RECORDED in the Volume and Page of the named RECORDS
 of Travis County, Texas, as stamped hereon by me, on

JUL 21 1983



Doris Angeline
 COUNTY CLERK
 TRAVIS COUNTY, TEXAS

8161 . 525