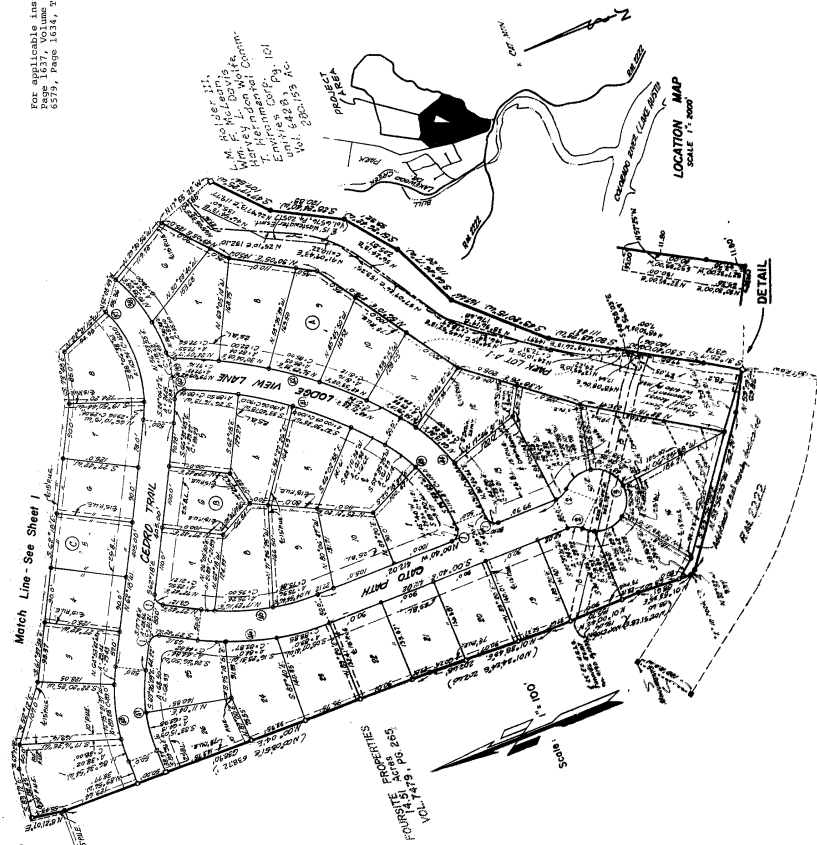


CAT MOUNTAIN NORTH SECTION I AMENDED 1981

See applicable partracments see Volume 6579,
Page 1637, Volume 6579, Page 1623, and Volume
6579, Page 1634, Travis County Deed Records.

- LEGEND**
- Iron pin or pipe head
 - Conc. Mark
 - Conc. Mark
 - RIVE Public Utility Easement
 - BL. Existing Line



1	2	3	4	5
1- 80000'00"	48034'03"	27308'06"	62043'38"	92808'53"
2- 15200'00"	12301'	5130'	24338'	2076'
3- 2335'	2438'	23836'	43799'	32377'
4- 2121'	2372'	41364'	20024'	
5- 86039'30"	31023'30"	32023'30"	21594'	10
6- 20307'	28077'	10322'	15400'	13527'
7- 3324'	158665'	20086'	2295'	26781'
8- 2948'	158667'	20817'	20738'	206117'
9- 21959'	78235483'	9352614"	21068'	15
10- 78200'	1500'	1500'	48840'	80250'
11- 28200'	1500'	1500'	48840'	80250'
12- 28200'	1500'	1500'	48840'	80250'
13- 28200'	1500'	1500'	48840'	80250'
14- 28200'	1500'	1500'	48840'	80250'
15- 28200'	1500'	1500'	48840'	80250'
16- 28200'	1500'	1500'	48840'	80250'
17- 28200'	1500'	1500'	48840'	80250'
18- 28200'	1500'	1500'	48840'	80250'
19- 28200'	1500'	1500'	48840'	80250'
20- 28200'	1500'	1500'	48840'	80250'
21- 28200'	1500'	1500'	48840'	80250'
22- 28200'	1500'	1500'	48840'	80250'
23- 28200'	1500'	1500'	48840'	80250'
24- 28200'	1500'	1500'	48840'	80250'
25- 28200'	1500'	1500'	48840'	80250'
26- 28200'	1500'	1500'	48840'	80250'
27- 28200'	1500'	1500'	48840'	80250'
28- 28200'	1500'	1500'	48840'	80250'
29- 28200'	1500'	1500'	48840'	80250'
30- 28200'	1500'	1500'	48840'	80250'
31- 28200'	1500'	1500'	48840'	80250'
32- 28200'	1500'	1500'	48840'	80250'
33- 28200'	1500'	1500'	48840'	80250'
34- 28200'	1500'	1500'	48840'	80250'
35- 28200'	1500'	1500'	48840'	80250'
36- 28200'	1500'	1500'	48840'	80250'
37- 28200'	1500'	1500'	48840'	80250'
38- 28200'	1500'	1500'	48840'	80250'
39- 28200'	1500'	1500'	48840'	80250'
40- 28200'	1500'	1500'	48840'	80250'
41- 28200'	1500'	1500'	48840'	80250'
42- 28200'	1500'	1500'	48840'	80250'
43- 28200'	1500'	1500'	48840'	80250'
44- 28200'	1500'	1500'	48840'	80250'
45- 28200'	1500'	1500'	48840'	80250'
46- 28200'	1500'	1500'	48840'	80250'
47- 28200'	1500'	1500'	48840'	80250'
48- 28200'	1500'	1500'	48840'	80250'
49- 28200'	1500'	1500'	48840'	80250'
50- 28200'	1500'	1500'	48840'	80250'
51- 28200'	1500'	1500'	48840'	80250'
52- 28200'	1500'	1500'	48840'	80250'

