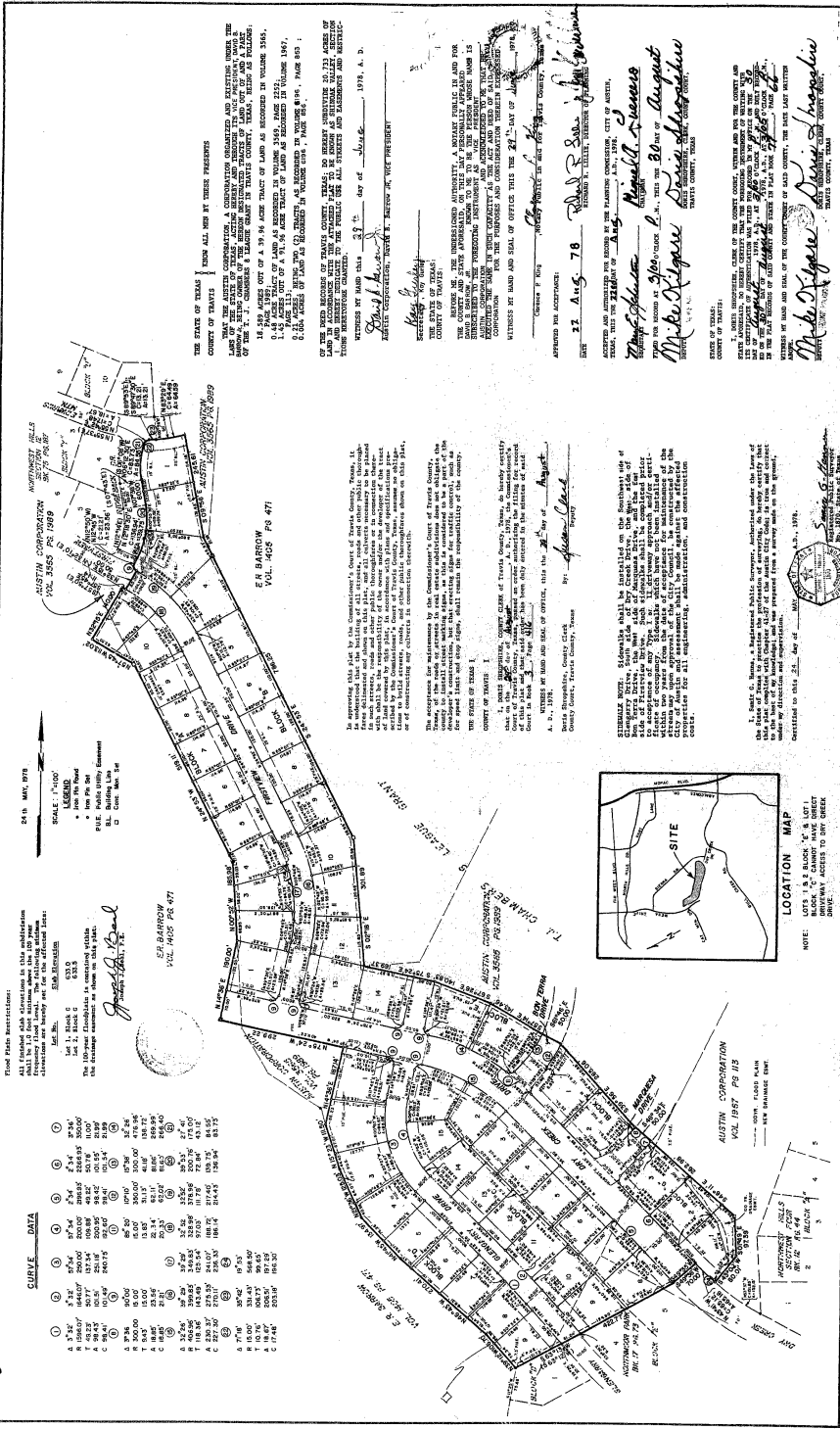


1-84-7929

Aug. 30-28 R.C.C.H.A. P.200 * 10-10



THE STATE OF TEXAS))
 COUNTY OF TRAVIS)
 KNOW ALL MEN BY THESE PRESENTS)
 THAT I, the undersigned,)
 do hereby certify that the)
 plat of the subdivision of)
 land shown on the attached)
 plat is correct and true)
 to the original survey)
 and that the same is)
 in accordance with the)
 laws of this State.)
 Witness my hand and seal)
 this 23rd day of August,)
 1978.)
 Notary Public in and for)
 the County of Travis,)
 State of Texas.)
 _____)
 Notary Public

APPROVED AND CERTIFIED TRUE AND CORRECT BY ME, CLERK OF THE COUNTY AND PUBLIC RECORDS, THIS 23rd DAY OF AUGUST, 1978.

CLERK OF COUNTY AND PUBLIC RECORDS

NOTARY PUBLIC

SHINOAK VALLEY SECTION I
 AUSTIN CORPORATION
 3637 For West Blvd., Austin, Texas

ESPEY, HUSTON & ASSOCIATES, INC.
 Engineering & Environmental Consultants

For Restrictions see Book 6482 Page 1333.
 Deed Records, Travis County, Texas.
 Doris Shroepshire, County Clerk, Travis County, Texas
 By: [Signature]