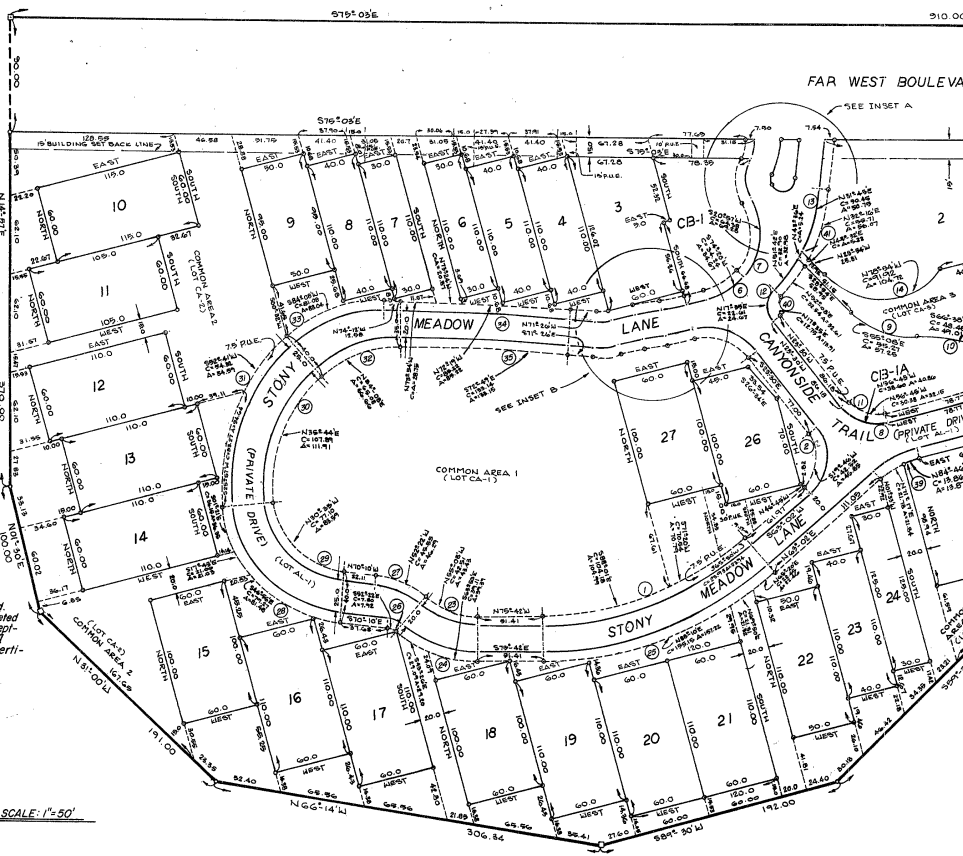
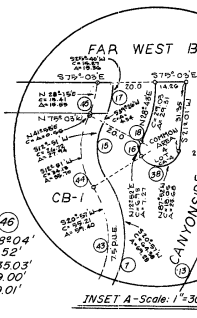


Vol. 77 Page 256
 PLAT RECORD, TRAVIS COUNTY, TEXAS
 Jan. 24-29 Rec'd 188 2838 x 20.00
 Vol. 77 Page 256 (Continued)
 PLAT RECORD, TRAVIS COUNTY, TEXAS

CURVE DATA	
1	I = 41°16'
2	T = 91.69'
3	R = 244.05'
4	C = 172.00'
5	A = 175.77'
6	I = 100°00'
7	T = 71.51'
8	R = 60.00'
9	C = 31.52'
10	A = 104.72'
11	I = 35°36'
12	T = 23.92'
13	R = 74.59'
14	C = 45.55'
15	A = 46.29'
16	I = 86°32'
17	T = 29.20'
18	R = 68.03'
19	C = 150.21'
20	A = 127.76'
21	I = 48°44'
22	T = 31.02'
23	R = 83.53'
24	C = 190.21'
25	A = 157.41'
26	I = 47°25'
27	T = 47.25'
28	R = 80.24'
29	C = 182.71'
30	A = 151.21'
31	I = 31°20'
32	T = 31.20'
33	R = 63.40'
34	C = 146.93'
35	A = 131.21'
36	I = 75°25'
37	T = 40.59'
38	R = 23.06'
39	C = 17.78'
40	A = 34.67'
41	I = 66°30'
42	T = 23.06'
43	R = 30.91'
44	C = 23.06'
45	A = 40.86'
46	I = 52°29'
47	T = 30.91'
48	R = 25.06'
49	C = 22.70'
50	A = 37.25'
51	I = 29°31'
52	T = 29.31'
53	R = 18.16'
54	C = 15.14'
55	A = 43.01'
56	I = 66°30'
57	T = 30.91'
58	R = 25.06'
59	C = 22.70'
60	A = 37.25'
61	I = 41°08'
62	T = 41.08'
63	R = 41.08'
64	C = 41.08'
65	A = 43.43'
66	I = 41°08'
67	T = 41.08'
68	R = 41.08'
69	C = 41.08'
70	A = 43.43'
71	I = 41°16'
72	T = 41.16'
73	R = 41.16'
74	C = 41.16'
75	A = 43.43'
76	I = 37°39'
77	T = 37.39'
78	R = 37.39'
79	C = 37.39'
80	A = 39.90'
81	I = 82°10'
82	T = 82.10'
83	R = 82.10'
84	C = 82.10'
85	A = 84.91'
86	I = 37°39'
87	T = 37.39'
88	R = 37.39'
89	C = 37.39'
90	A = 39.90'
91	I = 82°10'
92	T = 82.10'
93	R = 82.10'
94	C = 82.10'
95	A = 84.91'
96	I = 37°39'
97	T = 37.39'
98	R = 37.39'
99	C = 37.39'
100	A = 39.90'

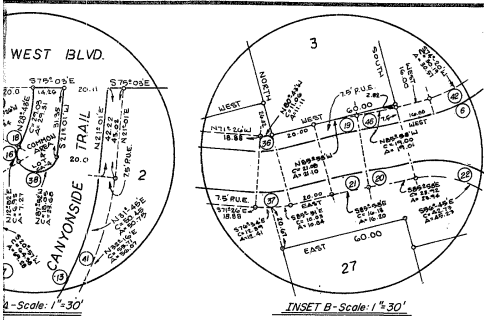


SIDEWALK NOTE
 Sidewalks shall be installed on both sides of Far West Blvd. Such sidewalks shall be completed on the south side prior to acceptance of any Type I & Type II driveway approach and/or certificate of occupancy.

SCALE: 1" = 50'

- LEGEND**
- Concrete Monument Set
 - Iron pin set
 - ⊙ Iron pin found
 - P.U.E. — Public utility easement

Amended Restr. Vol. 7790 pg. 936 R# 289-8992
 *For Correction of Plat Notice, see Vol. 1758 Pg. 1233 Subd. Rec. (R# 214-501)
 *Amended Restrictions Vol. 6624 Pg. 1487 Subd. Records



MEADOW MOUNTAIN A PLANNED UNIT DEVELOPMENT

THE STATE OF TEXAS: KNOW ALL MEN BY THESE PRESENTS:
COUNTY OF TRAVIS:

That Meadow Mountain Corporation, a corporation organized and existing under the laws of the State of Texas, having its home office in Austin, Texas, acting herein by and through its President, L. M. Holder III, owner of that certain 11637 acre tract and out of grid part of the T. J. Chambers Grant, situated in Travis County, Texas, as conveyed to it by deed of record in Volume 6422, Page 2 A 1 of the Travis County, Texas Deed Records, does hereby subdivide said 11637 acre tract in accordance with the attached plat to be known as MEADOW MOUNTAIN, and does hereby dedicate to the public the easements shown hereon, and does hereby grant and express easement across all common areas and private access easements for public use of the surface for all governmental functions, vehicular and/or non-vehicular, including fire and police protection services, solid and other waste material pickup, any other purposes any government authority deems necessary, and does further agree that all governmental entities, their agents or employees shall not be liable for any damage occurring to the surface of any of the said common areas and private access easements as a result of governmental vehicles traversing over same, in a manner that would not damage the typical dedicated street.

WITNESS MY HAND, this the 30 day of December, A. D. 1978.

MEADOW MOUNTAIN CORPORATION

[Signature]
L. M. Holder III, President

THE STATE OF TEXAS
COUNTY OF TRAVIS:

Before me, the undersigned authority, on this day personally appeared L. M. Holder III, President of Meadow Mountain Corporation, known to me to be the person whose name is subscribed to the foregoing instrument, and he acknowledged to me that he executed the same for the purposes and considerations therein expressed, in the capacity therein stated, as the acts and deeds of said corporation.

GIVEN UNDER MY HAND AND SEAL OF OFFICE, this the 30 day of December, A. D. 1978.

Jane E Shaw
Notary Public, in and for Travis County, Texas
JANE E. SHAW

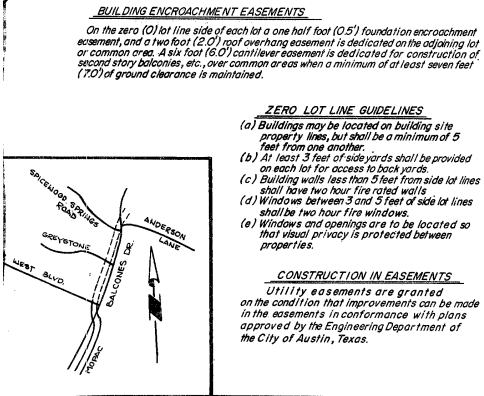
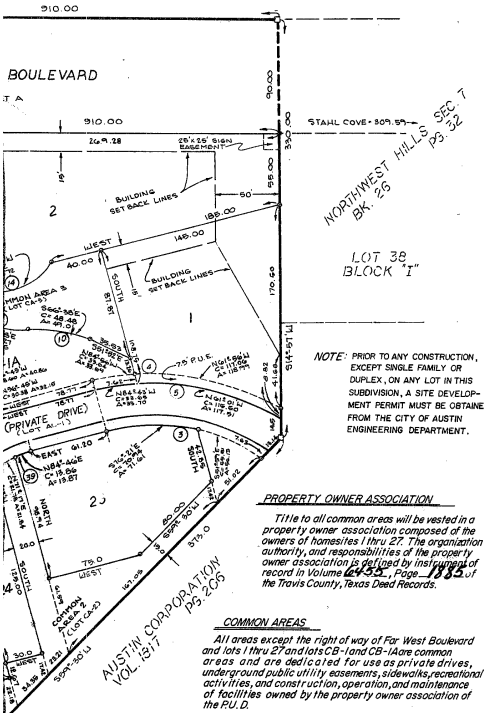
APPROVED FOR ACCEPTANCE: By [Signature], Date JANUARY 9, 1979

RICHARD LILLIE
Director of Planning

ACCEPTED AND AUTHORIZED FOR RECORD BY THE PLANNING COMMISSION, CITY OF AUSTIN, TEXAS,

this the 9TH day of JANUARY, A. D. 1979.

[Signature] Secretary MARY E. SMITH
[Signature] Chairman MIGUEL A. GONZALEZ



FILED FOR RECORD ON THE 24th DAY OF January, A. D. 1979 AT 2:00 O'CLOCK P. M.
DORIS SHROPSHIRE, CLERK, COUNTY COURT, TRAVIS COUNTY, TEXAS
By Mike Kilgore, Deputy

THE STATE OF TEXAS:
COUNTY OF TRAVIS:
I, Doris Shropshire, Clerk of the County Court within and for the County and State aforesaid, do hereby certify that the foregoing instrument of writing, with its certificate of authentication was filed for record in my office on the 24th day of January, A. D. 1979 at 2:00 o'clock P. M., and was duly recorded on the 24th day of January, A. D. 1979 at 2:03 o'clock P. M. in the Plat Records of said County, in Plat Book 77, at Pages 256 & 257.

WITNESS MY HAND AND SEAL OF THE COUNTY COURT OF SAID COUNTY, THE DATE LAST WRITTEN ABOVE.
DORIS SHROPSHIRE, CLERK, COUNTY COURT, TRAVIS COUNTY, TEXAS
By Mike Kilgore, Deputy

I, Clinton P. Rippey, am authorized under the laws of the State of Texas to practice the profession of surveying and I hereby certify that this plat complies with Chapter 41 of the Austin City Code, it is true and correct, and was prepared from an actual survey of the property made under my supervision on the ground.

9/28/77
DATE
Clinton P. Rippey
CLINTON P. RIPPY
REGISTERED PUBLIC SURVEYOR
NUMBER 1453

For Restrictions see Book 6455 page 1885.
Deed Records, Travis County, Texas.

Doris Shropshire, County Clerk, Travis County, Texas.
By [Signature] Deputy

* See Amended Restrictions See Vol. 6624 Pg. 1487 Deed Records.

ANNEXATION ORDINANCE
790111-G

CB14-77-003