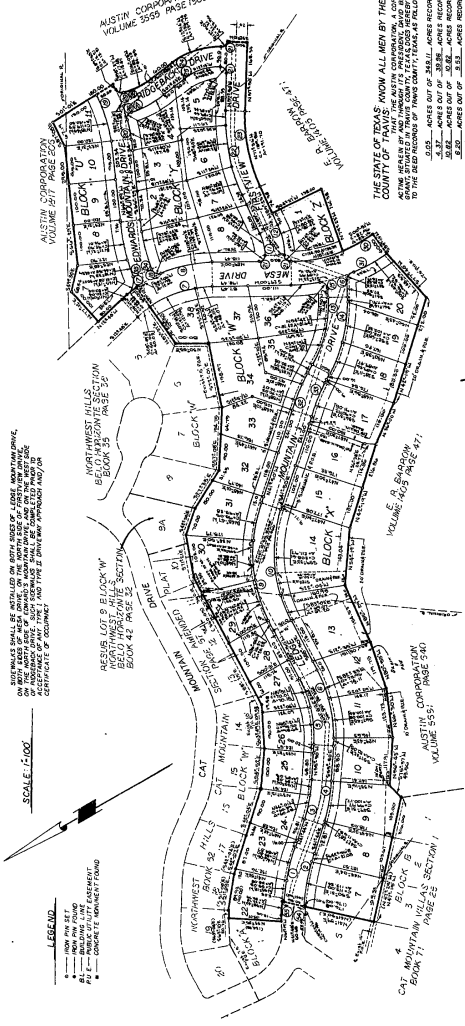


Feb 28. 77 RCCAA 6444 * 7.50

NORTHWEST HILLS SECTION 12



CURVE DATA

①	25.1'	①	45.0'	①	45.0'
②	25.1'	②	45.0'	②	45.0'
③	25.1'	③	45.0'	③	45.0'
④	25.1'	④	45.0'	④	45.0'
⑤	25.1'	⑤	45.0'	⑤	45.0'
⑥	25.1'	⑥	45.0'	⑥	45.0'
⑦	25.1'	⑦	45.0'	⑦	45.0'
⑧	25.1'	⑧	45.0'	⑧	45.0'
⑨	25.1'	⑨	45.0'	⑨	45.0'
⑩	25.1'	⑩	45.0'	⑩	45.0'
⑪	25.1'	⑪	45.0'	⑪	45.0'
⑫	25.1'	⑫	45.0'	⑫	45.0'
⑬	25.1'	⑬	45.0'	⑬	45.0'
⑭	25.1'	⑭	45.0'	⑭	45.0'
⑮	25.1'	⑮	45.0'	⑮	45.0'
⑯	25.1'	⑯	45.0'	⑯	45.0'
⑰	25.1'	⑰	45.0'	⑰	45.0'
⑱	25.1'	⑱	45.0'	⑱	45.0'
⑲	25.1'	⑲	45.0'	⑲	45.0'
⑳	25.1'	⑳	45.0'	⑳	45.0'
㉑	25.1'	㉑	45.0'	㉑	45.0'
㉒	25.1'	㉒	45.0'	㉒	45.0'
㉓	25.1'	㉓	45.0'	㉓	45.0'
㉔	25.1'	㉔	45.0'	㉔	45.0'
㉕	25.1'	㉕	45.0'	㉕	45.0'
㉖	25.1'	㉖	45.0'	㉖	45.0'
㉗	25.1'	㉗	45.0'	㉗	45.0'
㉘	25.1'	㉘	45.0'	㉘	45.0'
㉙	25.1'	㉙	45.0'	㉙	45.0'
㉚	25.1'	㉚	45.0'	㉚	45.0'
㉛	25.1'	㉛	45.0'	㉛	45.0'
㉜	25.1'	㉜	45.0'	㉜	45.0'
㉝	25.1'	㉝	45.0'	㉝	45.0'
㉞	25.1'	㉞	45.0'	㉞	45.0'
㉟	25.1'	㉟	45.0'	㉟	45.0'
㊱	25.1'	㊱	45.0'	㊱	45.0'
㊲	25.1'	㊲	45.0'	㊲	45.0'
㊳	25.1'	㊳	45.0'	㊳	45.0'
㊴	25.1'	㊴	45.0'	㊴	45.0'
㊵	25.1'	㊵	45.0'	㊵	45.0'
㊶	25.1'	㊶	45.0'	㊶	45.0'
㊷	25.1'	㊷	45.0'	㊷	45.0'
㊸	25.1'	㊸	45.0'	㊸	45.0'
㊹	25.1'	㊹	45.0'	㊹	45.0'
㊺	25.1'	㊺	45.0'	㊺	45.0'
㊻	25.1'	㊻	45.0'	㊻	45.0'
㊼	25.1'	㊼	45.0'	㊼	45.0'
㊽	25.1'	㊽	45.0'	㊽	45.0'
㊾	25.1'	㊾	45.0'	㊾	45.0'
㊿	25.1'	㊿	45.0'	㊿	45.0'

THE STATE OF TEXAS
 COUNTY OF TRAVIS
 I, DONALD SHROPSHIRE, CLERK OF THE COUNTY COURT WITHIN AND FOR THE COUNTY AND STATE OF TEXAS, DO HEREBY CERTIFY THAT THE FOREGOING MAP WAS FILED WITH ITS CERTIFICATE OF AUTHORIZATION AND WAS DULY RECORDED IN THE PLAT BOOK OF SAID COUNTY IN PLAT BOOK 75, PAGE 187.

WITNESS MY HAND AND SEAL OF THE COUNTY COURT, TRAVIS COUNTY, TEXAS, THIS 28th DAY OF FEBRUARY, A.D. 1977.

DONALD SHROPSHIRE, CLERK OF THE COUNTY COURT WITHIN AND FOR THE COUNTY AND STATE OF TEXAS

FILED FOR RECORD ON THE 21st DAY OF FEBRUARY, A.D. 1977, AT 1:20 P.M. IN PLAT BOOK 75, PAGE 187.

DONALD SHROPSHIRE, CLERK OF THE COUNTY COURT WITHIN AND FOR THE COUNTY AND STATE OF TEXAS

ACCEPTED AND AUTHORIZED FOR RECORD BY THE PLANNING COMMISSION OF THE CITY OF AUSTIN, TEXAS, THIS 28th DAY OF FEBRUARY, A.D. 1977.

REBECCA W. TULLER, DIRECTOR OF PLANNING

THIS IS TO CERTIFY THAT AUSTIN CITY CODE CHAPTER 23.27 OF 1974 HAS BEEN COMPLIED WITH.

DATED: 2-28-77

EMPOWERED BY: *Charles P. Rippey*
 CLERK OF THE COUNTY COURT, TRAVIS COUNTY, TEXAS

FOR RESTRICTIONS see Book 2736, page 1038.
 Beed Heropoulos, Travis County, Texas.
 Boris Schreimbire, County Clerk, Travis County, Texas
 By *James G. Smith*, Deputy

PLANNING AND ENGINEERING CALCULATIONS
 BY JEFFY HART & ASSOCIATES

CERTIFIED CORRECT BY: *Jeffery D. Hart*, 1-29-77
 CIVIL ENGINEER, E.C. 4-115

WITNESS MY HAND AND SEAL OF THE COUNTY COURT, TRAVIS COUNTY, TEXAS, THIS 28th DAY OF FEBRUARY, A.D. 1977.

DONALD SHROPSHIRE, CLERK OF THE COUNTY COURT WITHIN AND FOR THE COUNTY AND STATE OF TEXAS