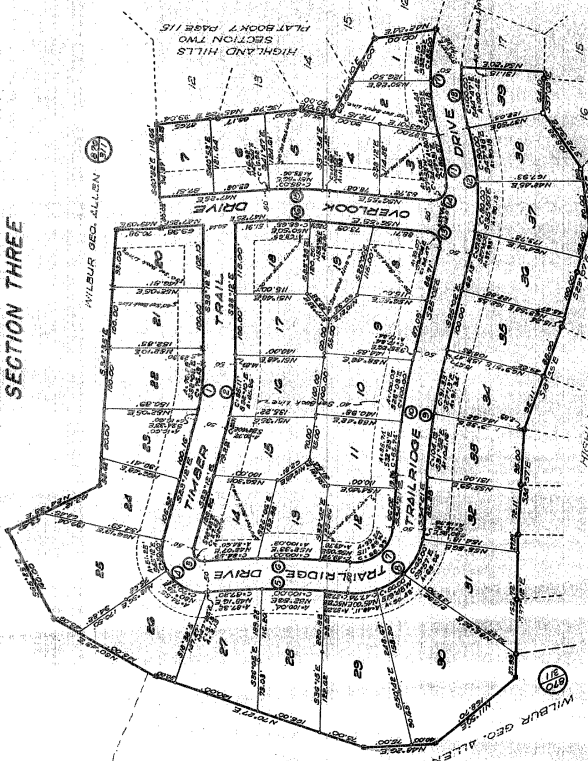


Approved for acceptance by the Board of Commissioners of Travis County, Texas, on July 11, 1936.

HIGHLAND HILLS SECTION THREE



CURVE DATA

Curve No.	Stationing	Radius	Chord	Area
1	1+00.00 to 1+05.00	100.00	10.00	157.08
2	1+05.00 to 1+10.00	100.00	10.00	157.08
3	1+10.00 to 1+15.00	100.00	10.00	157.08
4	1+15.00 to 1+20.00	100.00	10.00	157.08
5	1+20.00 to 1+25.00	100.00	10.00	157.08
6	1+25.00 to 1+30.00	100.00	10.00	157.08
7	1+30.00 to 1+35.00	100.00	10.00	157.08
8	1+35.00 to 1+40.00	100.00	10.00	157.08
9	1+40.00 to 1+45.00	100.00	10.00	157.08
10	1+45.00 to 1+50.00	100.00	10.00	157.08
11	1+50.00 to 1+55.00	100.00	10.00	157.08
12	1+55.00 to 1+60.00	100.00	10.00	157.08
13	1+60.00 to 1+65.00	100.00	10.00	157.08
14	1+65.00 to 1+70.00	100.00	10.00	157.08
15	1+70.00 to 1+75.00	100.00	10.00	157.08
16	1+75.00 to 1+80.00	100.00	10.00	157.08
17	1+80.00 to 1+85.00	100.00	10.00	157.08
18	1+85.00 to 1+90.00	100.00	10.00	157.08
19	1+90.00 to 1+95.00	100.00	10.00	157.08
20	1+95.00 to 2+00.00	100.00	10.00	157.08

APPROVED FOR ACCEPTANCE
 Date: July 11, 1936.

ACCEPTED AND AUTHORIZED FOR RECORD BY THE CITY PLANNING COMMISSION
 Date: July 11, 1936.

In approving this plat by the Commissioners Court of Travis County, Texas, it is understood that the building of all streets, roads and other public thoroughfares delineated and shown on this plat and all bridges and culverts necessary to be constructed thereon, and in connection therewith, shall be the responsibility of the owner and/or the developer of the tract and covered by this plat, in accordance with the provisions of special ordinances prescribed by the Commissioners Court of Travis County, Texas, and no obligation to build streets, roads and other public thoroughfares shown on this plat or of constructing any bridges or culverts in connection therewith.

THE STATE OF TEXAS
 County of Travis
 I, Miss Emilie Limberg, County Clerk of Travis County, Texas, do hereby certify that the foregoing plat and the same have been duly filed for record in the minutes of said Court on this 16 day of July, 1936.

FILED FOR RECORD
 At 11:30 o'clock A.M. on the 16 day of July, A.D. 1936.

MISS EMILIE LIMBERG
 County Clerk, Travis County, Texas

MISS EMILIE LIMBERG
 Deputy

MISS EMILIE LIMBERG
 Clerk, County Court, Travis County, Texas

PLAN 5843

Area in Lots 41.05 Ac.
 Area in Streets 2.91 Ac.
 Total in Subdivision 43.96 Ac.

THE STATE OF TEXAS
 County of Travis
 I, Tom W. Bradford, Secretary of the Board of Directors of Broadfield-Cummings Incorporated, do hereby certify that the foregoing plat and the same have been duly filed for record in the minutes of said Board of Directors on this 16 day of July, 1936.

THE STATE OF TEXAS
 County of Travis
 I, Tom W. Bradford, Secretary of the Board of Directors of Broadfield-Cummings Incorporated, do hereby certify that the foregoing plat and the same have been duly filed for record in the minutes of said Board of Directors on this 16 day of July, 1936.

MISS EMILIE LIMBERG
 County Clerk, Travis County, Texas

MISS EMILIE LIMBERG
 Deputy

MISS EMILIE LIMBERG
 Clerk, County Court, Travis County, Texas

PLAN 5843

Area in Lots 41.05 Ac.
 Area in Streets 2.91 Ac.
 Total in Subdivision 43.96 Ac.

APPROVED FOR ACCEPTANCE
 Date: July 11, 1936.

ACCEPTED AND AUTHORIZED FOR RECORD BY THE CITY PLANNING COMMISSION
 Date: July 11, 1936.

In approving this plat by the Commissioners Court of Travis County, Texas, it is understood that the building of all streets, roads and other public thoroughfares delineated and shown on this plat and all bridges and culverts necessary to be constructed thereon, and in connection therewith, shall be the responsibility of the owner and/or the developer of the tract and covered by this plat, in accordance with the provisions of special ordinances prescribed by the Commissioners Court of Travis County, Texas, and no obligation to build streets, roads and other public thoroughfares shown on this plat or of constructing any bridges or culverts in connection therewith.

THE STATE OF TEXAS
 County of Travis
 I, Tom W. Bradford, Secretary of the Board of Directors of Broadfield-Cummings Incorporated, do hereby certify that the foregoing plat and the same have been duly filed for record in the minutes of said Board of Directors on this 16 day of July, 1936.

THE STATE OF TEXAS
 County of Travis
 I, Tom W. Bradford, Secretary of the Board of Directors of Broadfield-Cummings Incorporated, do hereby certify that the foregoing plat and the same have been duly filed for record in the minutes of said Board of Directors on this 16 day of July, 1936.

MISS EMILIE LIMBERG
 County Clerk, Travis County, Texas

MISS EMILIE LIMBERG
 Deputy

MISS EMILIE LIMBERG
 Clerk, County Court, Travis County, Texas

MISS EMILIE LIMBERG
 Deputy

PLAN 5843

Area in Lots 41.05 Ac.
 Area in Streets 2.91 Ac.
 Total in Subdivision 43.96 Ac.