

9 on Restrictions see Vol. 1607 Page 503
see Record Travis County, Texas

HIGHLAND HILLS SECTION ONE

APPROVED FOR ACCEPTANCE
Date: August 22, 1935
By: *W. L. Mike Meloney*
Director of Planning

**ACCEPTED AND AUTHORIZED FOR RECORD
BY THE CITY PLANNING COMMISSION**
Date: August 22, 1935
By: *The Hon. J. M. ...*
Chairman

In approving this plat by the Commissioners Court of Travis County, Texas, it is understood that the building of all streets, roads and other public thoroughfares designed and shown on this plat, and all bridge-ways, culverts, drains, sewers, and other public utilities, and all other public improvements, shall be the responsibility of the owner and/or the developer of the tract of land covered by this plat, in accordance with plans and specifications approved by the Commissioners Court of Travis County, Texas, and the Commissioners Court of Travis County, Texas, assumes no obligation to build streets, roads and other public thoroughfares shown on this plat or to constructing any bridges or culverts in connection therewith.

THE STATE OF TEXAS
I, Miss Emilie Limberg, County Clerk of Travis County, Texas, do hereby certify that on the 22 day of August, A.D. 1935, the Commissioners Court of Travis County, Texas, did accept and authorize the filing of this plat, and that the same has been duly entered in the minutes of said Court in Book 2, Page 46 D.

WITNESS MY HAND AND SEAL OF OFFICE this 22 day of August, A.D. 1935.

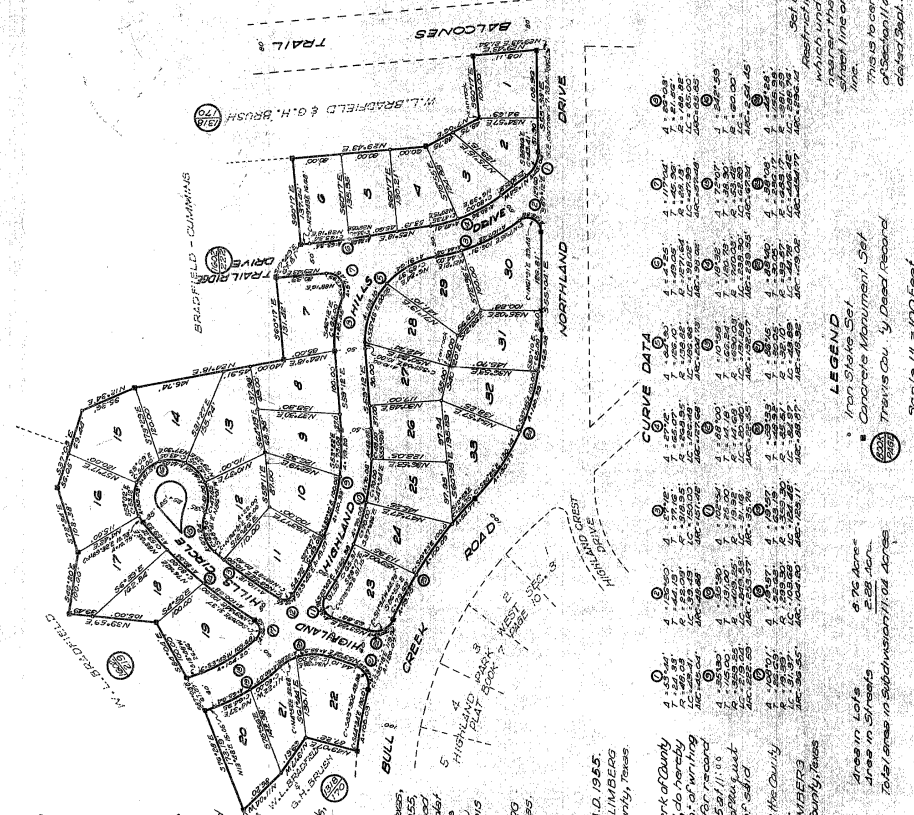
Miss Emilie Limberg
County Clerk, Travis County, Texas.

FILED FOR RECORD
BY: *W. L. Mike Meloney*
Deputy
AUG 22 1935
CLERK COUNTY COURT, TRAVIS COUNTY, TEXAS.

THE STATE OF TEXAS
I, Miss Emilie Limberg, Clerk of County Court, Travis County, Texas, do hereby certify that the within and foregoing instrument, or writing with its Certificate of Authentication, was filed for record in my office on the 22 day of August, A.D. 1935 at 11:00 o'clock A. M. and duly recorded in the 22 day book, just at the close of the day, in Book 2, Page 46 D.

WITNESS MY HAND AND SEAL OF OFFICE at the County Court of said County, this date last above written.

Miss Emilie Limberg
Clerk, County Court, Travis County, Texas.



THE STATE OF TEXAS
I, Miss Emilie Limberg, County Clerk of Travis County, Texas, do hereby certify that on the 22 day of August, A.D. 1935, the Commissioners Court of Travis County, Texas, did accept and authorize the filing of this plat, and that the same has been duly entered in the minutes of said Court in Book 2, Page 46 D.

WITNESS MY HAND AND SEAL OF OFFICE this 22 day of August, A.D. 1935.

Miss Emilie Limberg
County Clerk, Travis County, Texas.

FILED FOR RECORD
BY: *W. L. Mike Meloney*
Deputy
AUG 22 1935
CLERK COUNTY COURT, TRAVIS COUNTY, TEXAS.

THE STATE OF TEXAS
I, Miss Emilie Limberg, Clerk of County Court, Travis County, Texas, do hereby certify that the within and foregoing instrument, or writing with its Certificate of Authentication, was filed for record in my office on the 22 day of August, A.D. 1935 at 11:00 o'clock A. M. and duly recorded in the 22 day book, just at the close of the day, in Book 2, Page 46 D.

WITNESS MY HAND AND SEAL OF OFFICE at the County Court of said County, this date last above written.

Miss Emilie Limberg
Clerk, County Court, Travis County, Texas.

APPROVED FOR ACCEPTANCE
Date: August 22, 1935
By: *W. L. Mike Meloney*
Director of Planning

**ACCEPTED AND AUTHORIZED FOR RECORD
BY THE CITY PLANNING COMMISSION**
Date: August 22, 1935
By: *The Hon. J. M. ...*
Chairman

In approving this plat by the Commissioners Court of Travis County, Texas, it is understood that the building of all streets, roads and other public thoroughfares designed and shown on this plat, and all bridge-ways, culverts, drains, sewers, and other public utilities, and all other public improvements, shall be the responsibility of the owner and/or the developer of the tract of land covered by this plat, in accordance with plans and specifications approved by the Commissioners Court of Travis County, Texas, and the Commissioners Court of Travis County, Texas, assumes no obligation to build streets, roads and other public thoroughfares shown on this plat or to constructing any bridges or culverts in connection therewith.

THE STATE OF TEXAS
I, Miss Emilie Limberg, County Clerk of Travis County, Texas, do hereby certify that on the 22 day of August, A.D. 1935, the Commissioners Court of Travis County, Texas, did accept and authorize the filing of this plat, and that the same has been duly entered in the minutes of said Court in Book 2, Page 46 D.

WITNESS MY HAND AND SEAL OF OFFICE this 22 day of August, A.D. 1935.

Miss Emilie Limberg
County Clerk, Travis County, Texas.

FILED FOR RECORD
BY: *W. L. Mike Meloney*
Deputy
AUG 22 1935
CLERK COUNTY COURT, TRAVIS COUNTY, TEXAS.

THE STATE OF TEXAS
I, Miss Emilie Limberg, Clerk of County Court, Travis County, Texas, do hereby certify that the within and foregoing instrument, or writing with its Certificate of Authentication, was filed for record in my office on the 22 day of August, A.D. 1935 at 11:00 o'clock A. M. and duly recorded in the 22 day book, just at the close of the day, in Book 2, Page 46 D.

WITNESS MY HAND AND SEAL OF OFFICE at the County Court of said County, this date last above written.

Miss Emilie Limberg
Clerk, County Court, Travis County, Texas.

PLAN 5836

KNOW ALL MEN BY THESE PRESENTS:

That Bradfield - Cummings Incorporated, a corporation of Travis County, Texas, does hereby subdivide the land shown on the accompanying plat in accordance therewith. The said land is a portion of the 7-U Chambers League of the City of Travis County, Texas and is located in Travis County, Texas, as shown on the plat hereunto attached and filed for record in Book 2, Page 46 D, of the Travis County Deeds Records.

That Bradfield - Cummings Incorporated does hereby reserve easements as shown and does hereby dedicate to the use of the public the streets, roads and other public improvements shown on this subdivision as Highland Hills, Section 1.

IN WITNESS WHEREOF, Bradfield - Cummings Incorporated has caused these presents to be executed this 22 day of July, 1935, by its duly authorized officers, to-wit: its President, Tom M. Bradfield, and its Secretary, Donald H. Cummings, signed at Dallas, Texas, this 22 day of July, 1935.

BRADFIELD - CUMMINGS, INCORPORATED
Tom M. Bradfield, President
Donald H. Cummings, Secretary

THE STATE OF TEXAS

I, Miss Emilie Limberg, County Clerk of Travis County, Texas, do hereby certify that on the 22 day of July, A.D. 1935, the Board of Directors of said corporation, did accept and authorize the filing of this plat, and that the same has been duly entered in the minutes of said Board of Directors of said corporation.

WITNESS MY HAND AND SEAL OF OFFICE this 22 day of July, A.D. 1935.

Miss Emilie Limberg
County Clerk, Travis County, Texas.

BASEMENTS

Basements are retained for public utilities and drains, sewers and other public improvements of all lots for sanitary sewers in place provided that all such installations shall be under the supervision of the Director of Public Works with due regard for existing trees and other natural features and such installations shall have been made prior to change of ownership.

SEAL OF OFFICE

Subscribed and sworn to before me on this 22 day of July, 1935, at Dallas, Texas.

Miss Emilie Limberg
County Clerk, Travis County, Texas.

PLAN 5836