

THE STATE OF TEXAS,
 COUNTY OF TRAVIS

KNOW ALL MEN BY THESE PRESENTS: That the Austin Corporation, a corporation organized and existing under the laws of the State of Texas, acting hereby and through its Vice-President, David B. Barrow, do hereby subdivide 5.52 acres of land as shown on this plat consisting of 203.33 acres out of 203.33 acres conveyed by deed recorded in Vol. 187 B, page 218 of the deed records of Travis County, Texas, to be known as NORTHWEST HILLS, BELO HORIZONTE SECTION, and does adopt this map of subdivision hereby dedicating to the public use the streets and abutments as shown hereon.

WITNESS MY HAND AND SEAL this 22nd day of May, A.D. 1967

AUSTIN CORPORATION
 David B. Barrow
 Vice-President

Ahead:
 Key Young
 Secretary

THE STATE OF TEXAS,
 COUNTY OF TRAVIS

BEFORE ME, the undersigned authority, on this day personally appeared David B. Barrow, Vice-President of the Austin Corporation, and acknowledged to me that he executed the same as the act and deed of the Austin Corporation, for the purposes and considerations therein expressed and in the capacity herein stated.

GIVEN UNDER MY HAND AND SEAL OF OFFICE this 22nd day of May, A.D. 1967

Clara J. Skellern
 Notary Public in and for Travis County, Texas

APPROVED FOR ACCEPTANCE:
 E. E. Lyggett, 1967
 Director of Planning

Accepted and Authorized for Record by the Planning Commission of the City of Austin, Texas, this 22nd day of May, A.D. 1967

W. C. Chappin
 Mayor, Chairman

Emilie Limberg, Clerk of the County Court within and for the State and County of Travis, do hereby certify that the foregoing instrument of writing with the Certificate of Authentication was filed for record in my office on the 22nd day of May, A.D. 1967 at 2:00 o'clock P. M. this 22nd day of May, A.D. 1967.

WITNESS MY HAND AND SEAL OF THE COURT OF SAID COUNTY this 22nd day of May, A.D. 1967.

Emilie Limberg, Clerk, County Court
 Travis County, Texas

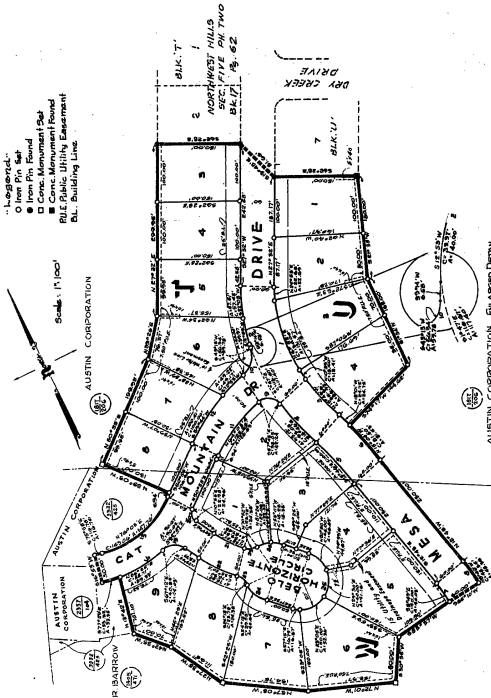
THIS IS TO CERTIFY THAT AUSTIN CITY CODE CHAPTER 23.27 OF 1964 HAS BEEN COMPLIED WITH FILED FOR RECORD ON 5/22/67

Emilie Limberg, Clerk,
 County Court, Travis
 County, Texas

Emilie Limberg, Clerk,
 County Court, Travis
 County, Texas

Emilie Limberg, Clerk,
 County Court, Travis
 County, Texas

Emilie Limberg, Clerk,
 County Court, Travis
 County, Texas



NORTHWEST HILLS
Belo Horizonte Section

1	40° 20'	67° 28'	74° 58'	79° 58'	81° 58'	84° 58'	87° 58'	90° 58'	93° 58'	96° 58'	99° 58'	102° 58'	105° 58'	108° 58'	111° 58'
2	308.28'	308.28'	308.28'	308.28'	308.28'	308.28'	308.28'	308.28'	308.28'	308.28'	308.28'	308.28'	308.28'	308.28'	308.28'
3	102.07'	102.07'	102.07'	102.07'	102.07'	102.07'	102.07'	102.07'	102.07'	102.07'	102.07'	102.07'	102.07'	102.07'	102.07'
4	210.99'	210.99'	210.99'	210.99'	210.99'	210.99'	210.99'	210.99'	210.99'	210.99'	210.99'	210.99'	210.99'	210.99'	210.99'
5	57° 28'	57° 28'	57° 28'	57° 28'	57° 28'	57° 28'	57° 28'	57° 28'	57° 28'	57° 28'	57° 28'	57° 28'	57° 28'	57° 28'	57° 28'
6	308.28'	308.28'	308.28'	308.28'	308.28'	308.28'	308.28'	308.28'	308.28'	308.28'	308.28'	308.28'	308.28'	308.28'	308.28'
7	102.07'	102.07'	102.07'	102.07'	102.07'	102.07'	102.07'	102.07'	102.07'	102.07'	102.07'	102.07'	102.07'	102.07'	102.07'
8	210.99'	210.99'	210.99'	210.99'	210.99'	210.99'	210.99'	210.99'	210.99'	210.99'	210.99'	210.99'	210.99'	210.99'	210.99'
9	57° 28'	57° 28'	57° 28'	57° 28'	57° 28'	57° 28'	57° 28'	57° 28'	57° 28'	57° 28'	57° 28'	57° 28'	57° 28'	57° 28'	57° 28'
10	308.28'	308.28'	308.28'	308.28'	308.28'	308.28'	308.28'	308.28'	308.28'	308.28'	308.28'	308.28'	308.28'	308.28'	308.28'
11	102.07'	102.07'	102.07'	102.07'	102.07'	102.07'	102.07'	102.07'	102.07'	102.07'	102.07'	102.07'	102.07'	102.07'	102.07'
12	210.99'	210.99'	210.99'	210.99'	210.99'	210.99'	210.99'	210.99'	210.99'	210.99'	210.99'	210.99'	210.99'	210.99'	210.99'
13	57° 28'	57° 28'	57° 28'	57° 28'	57° 28'	57° 28'	57° 28'	57° 28'	57° 28'	57° 28'	57° 28'	57° 28'	57° 28'	57° 28'	57° 28'
14	308.28'	308.28'	308.28'	308.28'	308.28'	308.28'	308.28'	308.28'	308.28'	308.28'	308.28'	308.28'	308.28'	308.28'	308.28'
15	102.07'	102.07'	102.07'	102.07'	102.07'	102.07'	102.07'	102.07'	102.07'	102.07'	102.07'	102.07'	102.07'	102.07'	102.07'
16	210.99'	210.99'	210.99'	210.99'	210.99'	210.99'	210.99'	210.99'	210.99'	210.99'	210.99'	210.99'	210.99'	210.99'	210.99'
17	57° 28'	57° 28'	57° 28'	57° 28'	57° 28'	57° 28'	57° 28'	57° 28'	57° 28'	57° 28'	57° 28'	57° 28'	57° 28'	57° 28'	57° 28'
18	308.28'	308.28'	308.28'	308.28'	308.28'	308.28'	308.28'	308.28'	308.28'	308.28'	308.28'	308.28'	308.28'	308.28'	308.28'

Job No. 5804
 Date 5/22/67
 Drawn - J.P.

Aug 20 1967 P.C.H.R. 5804 P 9-30