

**AFTER RECORDING RETURN TO:**

Robert D. Burton, Esq.  
Winstead, PC  
401 Congress Ave., Suite 2100  
Austin, Texas 78701  
Email: [rburton@winstead.com](mailto:rburton@winstead.com)

**B**  
**BLUFFS**  
**AT BALCONES**

**SEVENTH AMENDMENT TO  
DECLARATION OF CONDOMINIUM REGIME  
FOR BLUFFS AT BALCONES  
(A Residential Condominium in Travis County, Texas)**

Cross reference to that certain Declaration of Condominium Regime for Bluffs at Balcones recorded as Document No. 2008171271, Official Public Records of Travis County, Texas, as amended by that certain First Amendment to Declaration of Condominium Regime for Bluffs at Balcones recorded as Document No. 2010046741, Official Public Records of Travis County, Texas, as amended by that certain Second Amendment to Declaration of Condominium Regime for Bluffs at Balcones recorded as Document No. 2011185750, Official Public Records of Travis County, Texas, as amended by that certain Third Amendment to Declaration of Condominium Regime for Bluffs at Balcones recorded as Document No. 2012011955, Official Public Records of Travis County, Texas, as amended by that certain Fourth Amendment to Declaration of Condominium Regime for Bluffs at Balcones recorded as Document No. 2012062044, Official Public Records of Travis County, Texas and as further amended by that certain Fifth Amendment to Declaration of Condominium Regime for Bluffs at Balcones recorded as Document No. 2012167773, Official Public Records of Travis County, Texas, and as further amended by that certain Sixth Amendment to Declaration of Condominium Regime for Bluffs at Balcones recorded as Document No. 2012218857, Official Public Records of Travis County, Texas.

**SEVENTH AMENDMENT TO DECLARATION OF CONDOMINIUM REGIME FOR  
BLUFFS AT BALCONES**

This Seventh Amendment to Declaration of Condominium Regime for Bluffs at Balcones (the "Amendment") is made by SDI 2008-BLUFFS, LTD., a Texas limited partnership (the "Declarant"), and is as follows:

**RECITALS:**

A. Bluffs at Balcones, a residential condominium project (the "Regime"), located in Travis County, Texas, was established pursuant to that certain Declaration of Condominium Regime for Bluffs at Balcones recorded as Document No. 2008171271, Official Public Records of Travis County, Texas, as amended by that certain First Amendment to Declaration of Condominium Regime for Bluffs at Balcones recorded as Document No. 2010046741, Official Public Records of Travis County, Texas, as amended by that certain Second Amendment to Declaration of Condominium Regime for Bluffs at Balcones recorded as Document No. 2011185750, Official Public Records of Travis County, Texas, as amended by that certain Third Amendment to Declaration of Condominium Regime for Bluffs at Balcones recorded as Document No. 2012011955, Official Public Records of Travis County, Texas, as amended by that certain Fourth Amendment to Declaration of Condominium Regime for Bluffs at Balcones recorded as Document No. 2012062044, Official Public Records of Travis County, Texas, as further amended by that certain Fifth Amendment to Declaration of Condominium Regime for Bluffs at Balcones recorded as Document No. 2012167773, Official Public Records of Travis County, Texas, and as further amended by that certain Sixth Amendment to Declaration of Condominium Regime for Bluffs at Balcones recorded as Document No. 2012218857, Official Public Records of Travis County, Texas (collectively, the "Declaration").

B. As provided in *Section A.3.10* of Appendix "A" to the Declaration, during the Development Period, Declarant has reserved the right to unilaterally amend the Declaration, without consent of other owners or any mortgagee, to create Units, General Common Elements, and Limited Common Elements within the Property.

C. In accordance with *Provision A.3.8* of Appendix "A" to the Declaration, Declarant has reserved the right, during the Development Period, to create Units, General Common Elements, and Limited Common Elements within the Property.

D. The "Development Period" as such term is defined in the Declaration, is a seven (7) year period commencing on the date the Declaration was recorded in the Official Public Records of Travis County, Texas. The Declaration was recorded in the Official Public Records of Travis County, Texas, on October 15, 2008.

E. Declarant desires to amend the Declaration for the purpose of creating Yard LCE, as depicted on the New Plats and Plans (as hereinafter defined).

NOW THEREFORE, Declarant hereby amends and modifies the Declaration, as follows:

1. **Creation of Limited Common Elements.** In accordance with the rights reserved by the Declarant pursuant to *Section 5.1* of the Declaration and *Provisions A.3.8 and A.3.10* of Appendix "A", Declarant hereby creates limited common elements for Units G18 and G19 and allocates the limited common elements as Yard LCE for Units G18 and G19 as depicted on the New Plats and Plans (as hereinafter defined).

2. **Replacement of Attachment 1.** Attachment 1 to the Declaration is hereby deleted in its entirety and the Plats and Plans attached hereto as Exhibit "A" (the "**New Plats and Plans**") are substituted in their place. The New Plats and Plans: (i) assign an identifying number to all Units; (ii) describe the portion of the limited common elements created or assigned to all Units; (iii) depict portions of the Regime allocated hereby as Yard LCE; and (iv) include the information required by Section 82.059 of the Texas Uniform Condominium Act.

3. **Percentage Interests.** The Percentage of Common Element Ownership and Share of Common Expenses allocated to all Units within the Regime shall remain as stated in the Declaration and shall be unaffected by this Amendment.

4. **Miscellaneous.** Any capitalized terms used and not otherwise defined herein shall have the meanings set forth in the Declaration. Unless expressly amended by this Amendment, all other terms and provisions of the Declaration remain in full force and effect as written, and are hereby ratified and confirmed.

**[SIGNATURE PAGE FOLLOWS]**



**EXHIBIT "A"**

**ATTACHMENT 1 TO THE DECLARATION OF CONDOMINIUM REGIME FOR  
BLUFFS AT BALCONES**

**[CONDOMINIUM PLATS AND PLANS]**

The plats and plans, attached hereto as Attachment 1 contains the information required by the Texas Uniform Condominium Act.

Printed Name: \_\_\_\_\_

RPLS or License No. \_\_\_\_\_

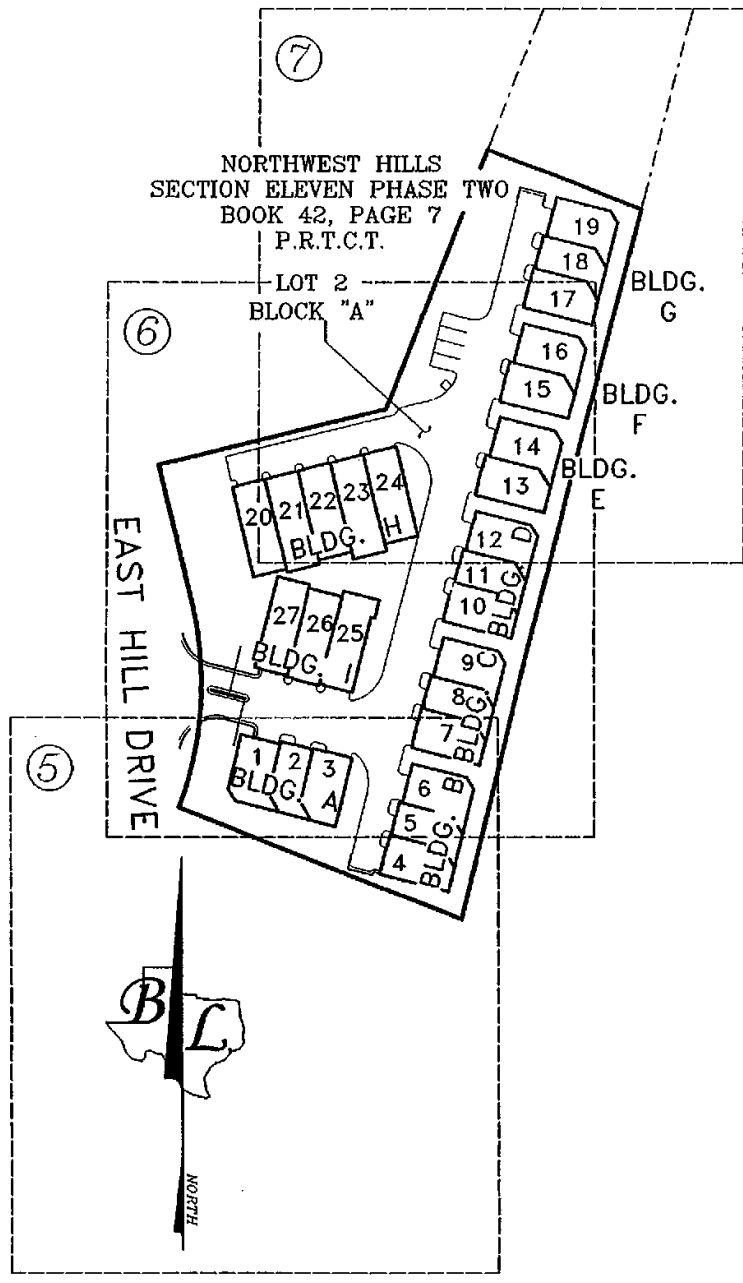
**BOUNDARIES OF UNIT**

The legal boundaries of each Unit are established by the Declarant and the plats and plans attached hereto. However, each Owner acknowledges that the Unit may be measured and depicted in a manner which differs from the legal boundaries of a Unit. For example, the Unit may be measured or depicted differently for tax purposes, appraisal purposes, sales purposes, and for purposes of carpeting and paint. No single measurement is definitive for all purposes. Measurements may be of the area under roof, or the air conditioned space, or the area within the Unit's legal boundaries. The Unit's partition wall cavities and/or its perimeter wall cavities may or may not be included. The Unit's garage area, attic area, and/or balcony space may or may not be included.

**SEE SHEET 2 OF 12 OF ATTACHMENT 1 FOR ORIGINAL CERTIFICATION**

SEVENTH AMENDMENT TO DECLARATION OF CONDOMINIUM REGIME  
BLUFFS AT BALCONES

AUSTIN 1/718296v.1  
53069-4 10/23/2013



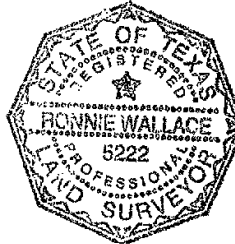
"ATTACHMENT 1"  
 THE BLUFFS AT BALCONES CONDOMINIUMS  
 [PLATS AND PLANS]

§ Certification of Surveyor §

The attached plats and plans, attached hereto as "Attachment 1" contains the information required by Section 82.052 and Section 82.059 of the Texas Uniform Condominium Act, as applicable.

*Ronnie Wallace*  
 \_\_\_\_\_  
 Ronnie Wallace  
 R.P.L.S. No. 5222

Date: *18 October 2013*



"ATTACHMENT 1"

THE BLUFFS AT BALCONES CONDOMINIUMS  
 BEING 1.926 ACRES OF LAND OUT OF THE  
 T.J. CHAMBERS SURVEY IN TRAVIS COUNTY, TEXAS  
 AND BEING KNOWN AS LOT 2, BLOCK A,  
 NORTHWEST HILLS SECTION ELEVEN, PHASE 2;  
 A SUBDIVISION OF RECORD IN BOOK 42, PAGE 7  
 OF THE PLAT RECORDS OF TRAVIS COUNTY, TEXAS

**BASELINE LAND SURVEYORS, INC.**  
 PROFESSIONAL LAND SURVEYING SERVICES  
 8333 CROSS PARK DRIVE  
 AUSTIN, TEXAS 78757  
 OFFICE: 512.374.9722 FAX: 512.873.9743  
 ron-baseline@austin.rr.com

File: S: Projects\Bluffs at Balcones\Draw\Bluffs at Balcones.dwg		SHEET 2 of 12
Job No.	Layer State: Condo Regime	
Scale (Hor.): N/A	Scale (Vert.):	
Date: 10/18/13	Checked By: JSL	Drawn By: RLW

**GENERAL NOTES**

- 1.) THE CONFIGURATION REPRESENTED IN THE DRAWINGS OF THE BUILDINGS IS BASED UPON THE CONSTRUCTION DOCUMENTS PREPARED BY ECKOLS & ASSOCIATES AIA, AND ARE NOT BASED UPON ACTUAL ON-SITE OBSERVATIONS AND MEASUREMENTS.
- 2.) ALL IMPROVEMENTS AND LAND REFLECTED ON THE PLAT ARE DESIGNATED AS GENERAL COMMON ELEMENTS, SAVE AND EXCEPT PORTIONS OF THE REGIME DESIGNATED AS LIMITED COMMON ELEMENTS OR "L.C.E." OR UNITS: (i) IN THE DECLARATION OF CONDOMINIUM REGIME FOR THE BLUFFS AT BALCONES CONDOMINIUMS; OR (ii) ON THE PLATS AND PLANS OF THE REGIME.
- 3.) OWNERSHIP AND USE OF CONDOMINIUM UNITS IS SUBJECT TO THE RIGHTS AND RESTRICTIONS CONTAINED IN THE DECLARATION OF CONDOMINIUM REGIME FOR THE BLUFFS AT BALCONES CONDOMINIUMS.
- 4.) EACH UNIT, BUILDING, LIMITED COMMON ELEMENT AND GENERAL COMMON ELEMENT IS SUBJECT TO SPECIAL RIGHTS RESERVED BY THE DECLARANT AS PROVIDED IN THE DECLARATION OF CONDOMINIUM REGIME FOR THE BLUFFS AT BALCONES CONDOMINIUMS. PURSUANT TO SUCH PROVISIONS, AMONG OTHER THINGS, DECLARANT HAS RESERVED THE RIGHT TO: (i) COMPLETE OR MAKE IMPROVEMENTS INDICATED ON THE PLAT AND PLANS (ii) EXERCISE ANY DEVELOPMENT RIGHT PERMITTED BY THE TEXAS UNIFORM CONDOMINIUM ACT AND THE DECLARATION (iii) USE UNITS OWNED OR LEASED BY DECLARANT AS MODELS, STORAGE AREAS, AND OFFICES FOR THE MARKETING, MANAGEMENT, MAINTENANCE, CUSTOMER SERVICE, CONSTRUCTION AND LEASING OF THE PROPERTY AND (iv) APPOINT OR REMOVE ANY DECLARANT-APPOINTED OFFICER OR DIRECTOR OF THE ASSOCIATION DURING THE DECLARANT CONTROL PERIOD (AS DESCRIBED IN THE DECLARATION) CONSISTENT WITH THE TEXAS UNIFORM CONDOMINIUM ACT. AS PROVIDED IN THE DECLARATION, FOR PURPOSES OF PROMOTING, IDENTIFYING, AND MARKETING THE PROPERTY, DECLARANT RESERVES AN EASEMENT AND RIGHT TO PLACE OR INSTALL SIGNS, BANNERS, FLAGS, DISPLAY LIGHTING, POTTED PLANTS, EXTERIOR DECORATIVE ITEMS, SEASONAL DECORATIONS, TEMPORARY WINDOW TREATMENTS, AND SEASONAL LANDSCAPING ON THE PROPERTY, INCLUDING ITEMS AND LOCATIONS THAT ARE PROHIBITED TO OTHER OWNERS AND RESIDENTS. AS PROVIDED IN THE DECLARATION, DECLARANT HAS AN EASEMENT AND RIGHT OF INGRESS AND EGRESS IN AND THROUGH THE COMMON ELEMENTS (AS DEFINED IN THE DECLARATION) AND UNITS OWNED OR LEASED BY DECLARANT FOR PURPOSES OF CONSTRUCTING, MAINTAINING, MANAGING, AND MARKETING THE PROPERTY, AND FOR DISCHARGING DECLARANT'S OBLIGATIONS UNDER THE TEXAS UNIFORM CONDOMINIUM ACT AND THE DECLARATION.

"ATTACHMENT 1"

**THE BLUFFS AT BALCONES CONDOMINIUMS  
BEING 1.926 ACRES OF LAND OUT OF THE  
T.J. CHAMBERS SURVEY IN TRAVIS COUNTY, TEXAS  
AND BEING KNOWN AS LOT 2, BLOCK A,  
NORTHWEST HILLS SECTION ELEVEN, PHASE 2;  
A SUBDIVISION OF RECORD IN BOOK 42, PAGE 7  
OF THE PLAT RECORDS OF TRAVIS COUNTY, TEXAS**

**BASELINE LAND SURVEYORS, INC.**  
PROFESSIONAL LAND SURVEYING SERVICES  
8333 CROSS PARK DRIVE  
AUSTIN, TEXAS 78757  
OFFICE: 512.374.9722 FAX: 512.873.9743  
ron-baseline@austin.rr.com

File: S: Projects\Bluffs at Balcones\Draw\Bluffs at Balcones.dwg		<b>SHEET</b>
Job No.	Layer State: Condo Regime	
Scale (Hor.): N/A	Scale (Vert.):	<b>3 of 12</b>
Date: 10/18/13	Checked By: JSL Drawn By: RLW	



### LEGEND

- ▣ CONCRETE MONUMENT FOUND (TYPE II)
- 1/2" IRON REBAR FOUND; (NOTED, IF CAPPED)
- ▲ NAIL FOUND
- △ CALCULATED POINT
- PROPOSED WALL
- P.R.T.C.T. PLAT RECORDS OF TRAVIS COUNTY, TEXAS
- R.O.W. RIGHT OF WAY
- G.C.E. GENERAL COMMON ELEMENT
- ( ) RECORD INFORMATION

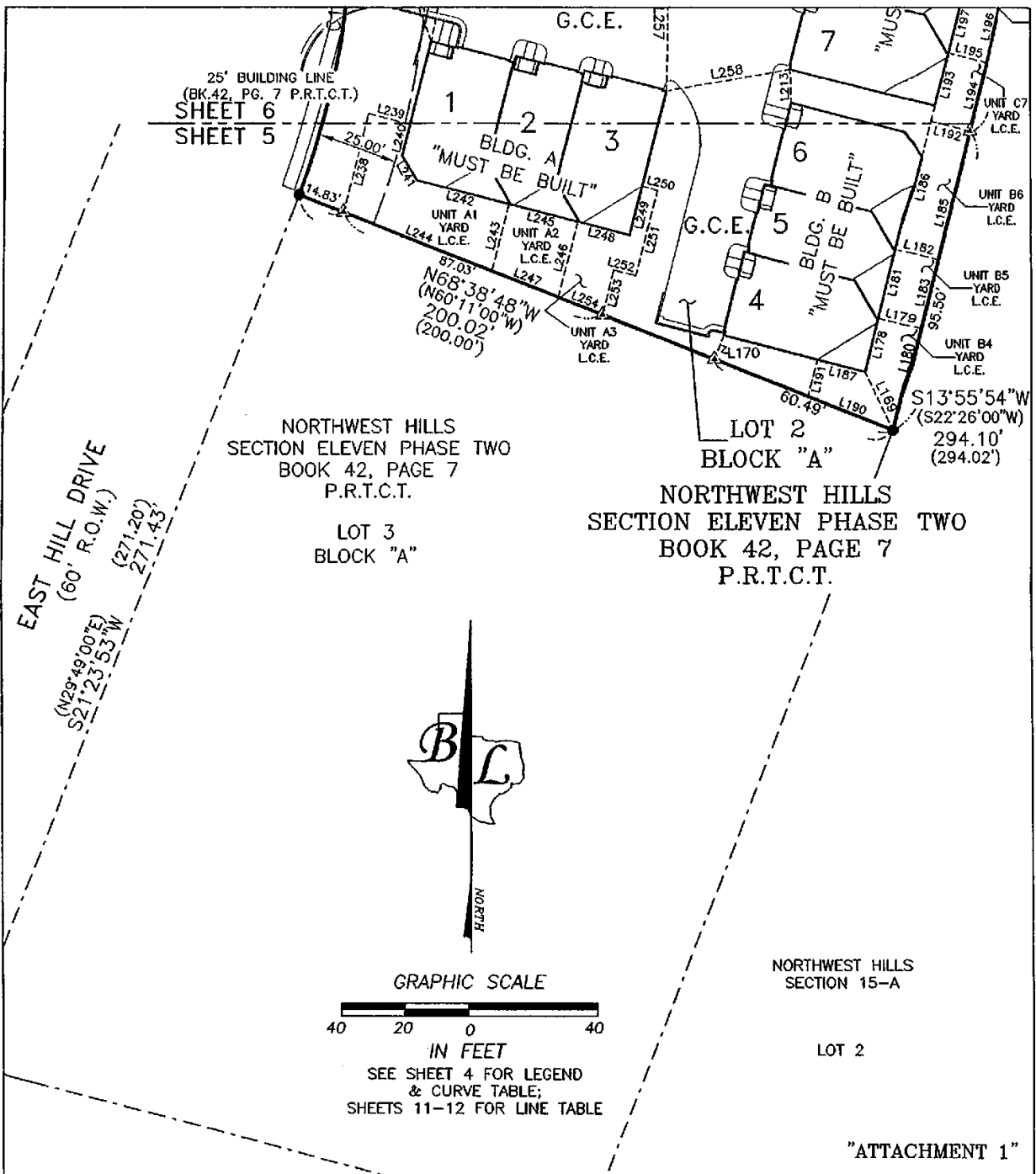
CURVE TABLE					
CURVE	RADIUS	LENGTH	DELTA	BEARING	CHORD
C1	222.01'	135.53'	34°58'40"	N03°52'35"E	133.44'
(C1)	222.01'	135.62'	35°00'01"	N12°19'00"E	133.52'

"ATTACHMENT 1"

**THE BLUFFS AT BALCONES CONDOMINIUMS  
BEING 1.926 ACRES OF LAND OUT OF THE  
T.J. CHAMBERS SURVEY IN TRAVIS COUNTY, TEXAS  
AND BEING KNOWN AS LOT 2, BLOCK A,  
NORTHWEST HILLS SECTION ELEVEN, PHASE 2;  
A SUBDIVISION OF RECORD IN BOOK 42, PAGE 7  
OF THE PLAT RECORDS OF TRAVIS COUNTY, TEXAS**

**BASELINE LAND SURVEYORS, INC.**  
PROFESSIONAL LAND SURVEYING SERVICES  
8333 CROSS PARK DRIVE  
AUSTIN, TEXAS 78757  
OFFICE: 512.374.9722 FAX: 512.873.9743  
ron-baseline@austln.rr.com

File: S: Projects\Bluffs at Balcones\Draw\Bluffs at Balcones.dwg		<b>SHEET</b>
Job No.	Layer/State: Condo Regime	
Scale (Hor.): N/A	Scale (Vert.):	<b>4 of 12</b>
Date: 10/18/13	Checked By: JSL Drawn By: RLW	

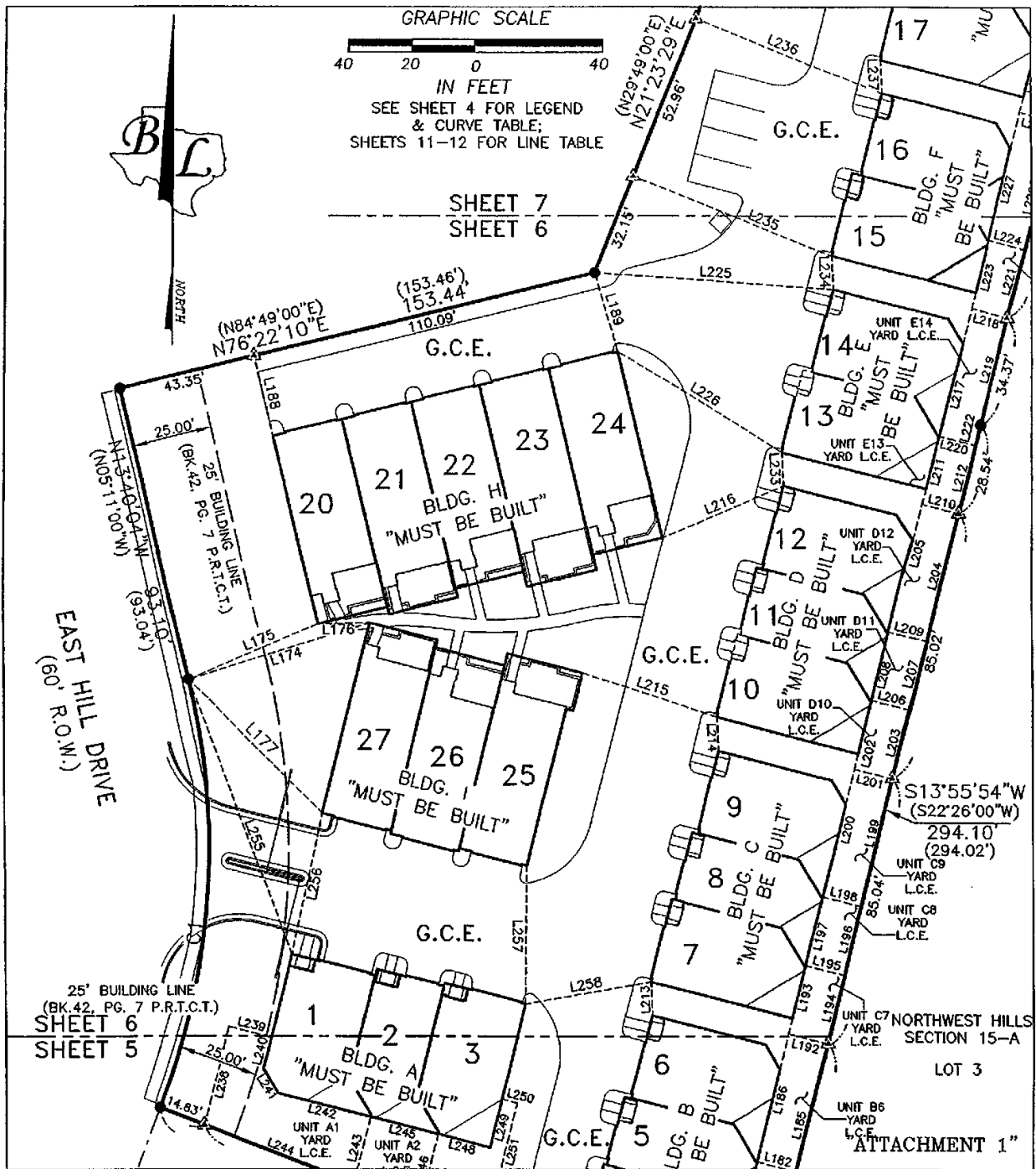


THE BLUFFS AT BALCONES CONDOMINIUMS  
BEING 1.926 ACRES OF LAND OUT OF THE  
T.J. CHAMBERS SURVEY IN TRAVIS COUNTY, TEXAS  
AND BEING KNOWN AS LOT 2, BLOCK A,  
NORTHWEST HILLS SECTION ELEVEN, PHASE 2;  
A SUBDIVISION OF RECORD IN BOOK 42, PAGE 7  
OF THE PLAT RECORDS OF TRAVIS COUNTY, TEXAS

**BASILINE LAND SURVEYORS, INC.**  
PROFESSIONAL LAND SURVEYING SERVICES  
8533 CROSS PARK DRIVE  
AUSTIN, TEXAS 78757  
OFFICE: 512.374.9722 FAX: 512.873.9743  
ron-baseline@austin.rr.com

File: S: Projects\Bluffs at Balcones\Bluffs at Balcones.dwg	SHEET	
Job No.		Layer State: Condo Regime
Scale (Hor.): N/A		Scale (Vert.):
Date: 10/18/13		Checked By: JSL Drawn By: RLW

5 of 12



THE BLUFFS AT BALCONES CONDOMINIUMS  
BEING 1.926 ACRES OF LAND OUT OF THE  
T.J. CHAMBERS SURVEY IN TRAVIS COUNTY, TEXAS  
AND BEING KNOWN AS LOT 2, BLOCK A,  
NORTHWEST HILLS SECTION ELEVEN, PHASE 2;  
A SUBDIVISION OF RECORD IN BOOK 42, PAGE 7  
OF THE PLAT RECORDS OF TRAVIS COUNTY, TEXAS

**BASELINE LAND SURVEYORS, INC.**  
PROFESSIONAL LAND SURVEYING SERVICES  
8333 CROSS PARK DRIVE  
AUSTIN, TEXAS 78757  
OFFICE: 512.374.9722 FAX: 512.873.9743  
ron-baseline@austln.r.com

File: S: Projects\Bluffs at Balcones\Drawings\Bluffs at Balcones.dwg	SHEET
Job No.	Layer State: Condo Regime
Scale (Hor.): N/A	Scale (Vert.):
Date: 10/18/13	Checked By: JSL Drawn By: RLW

6 of 12

NORTHWEST HILLS  
SECTION ELEVEN PHASE TWO  
BOOK 42, PAGE 7  
P.R.T.C.T.

LOT 1  
BLOCK "A"

NORTHWEST HILLS  
SECTION ELEVEN PHASE TWO  
BOOK 42, PAGE 7  
P.R.T.C.T.

LOT 2  
BLOCK "A"

NORTHWEST HILLS  
SECTION 15-A

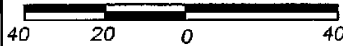
LOT 4

NORTHWEST HILLS  
SECTION 15-A

LOT 4



GRAPHIC SCALE



IN FEET

SEE SHEET 4 FOR LEGEND  
& CURVE TABLE;  
SHEETS 11-12 FOR LINE TABLE

SHEET 7  
SHEET 6

(153.46')  
153.44'  
110.09'

G.C.E.

21 22 23 24  
BLDG. H  
"MUST BE BUILT"

(N60°47'00"W)  
S68°46'50"E  
(108.30')  
108.10'  
54.75'

G.C.E. 19  
18  
17  
BLDG. G  
"MUST BE BUILT"

UNIT G19  
YARD  
L.C.E.  
UNIT G18  
YARD  
L.C.E.  
UNIT G17  
YARD  
L.C.E.

(182.05')  
182.15'  
(N29°49'00"E)  
N21°23'29"E  
52.98'

G.C.E.

16  
15  
BLDG. F  
"MUST BE BUILT"

(S23°03'00"W)  
S14°35'50"W  
183.54'  
(184.48')

UNIT F16  
YARD  
L.C.E.  
UNIT F15  
YARD  
L.C.E.

(153.46')  
153.44'  
110.09'

14  
13  
BLDG. E  
"MUST BE BUILT"

UNIT E14  
YARD  
L.C.E.  
UNIT E13  
YARD  
L.C.E.

12  
BLDG. D  
"MUST BE BUILT"

UNIT D12  
YARD  
L.C.E.

"ATTACHMENT 1"

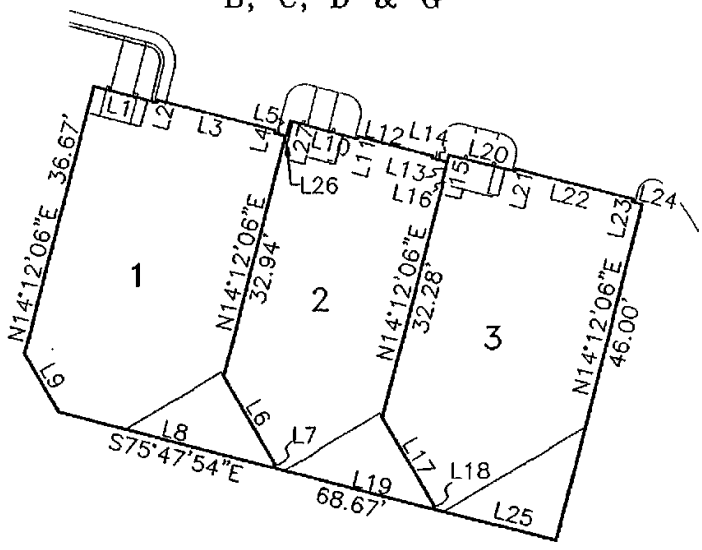
THE BLUFFS AT BALCONES CONDOMINIUMS  
BEING 1.926 ACRES OF LAND OUT OF THE  
T.J. CHAMBERS SURVEY IN TRAVIS COUNTY, TEXAS  
AND BEING KNOWN AS LOT 2, BLOCK A,  
NORTHWEST HILLS SECTION ELEVEN, PHASE 2;  
A SUBDIVISION OF RECORD IN BOOK 42, PAGE 7  
OF THE PLAT RECORDS OF TRAVIS COUNTY, TEXAS

BASELINE LAND SURVEYORS, INC.  
PROFESSIONAL LAND SURVEYING SERVICES

8333 CROSS PARK DRIVE  
AUSTIN, TEXAS 78757  
OFFICE: 512.374.9722 FAX: 512.873.9743  
ron-baseline@austin.rr.com

File: S:\Projects\Bluffs at Balcones\Draw\Bluffs at Balcones.dwg	Layer State: Condo Regime	SHEET 7 of 12
Job No.	Scale (Hor.): N/A	
Date: 10/18/13	Scale (Vert.):	Checked By: JSL
		Drawn By: RLW

**ANNOTATION DETAIL SHEET FOR BUILDINGS A,  
B, C, D & G**



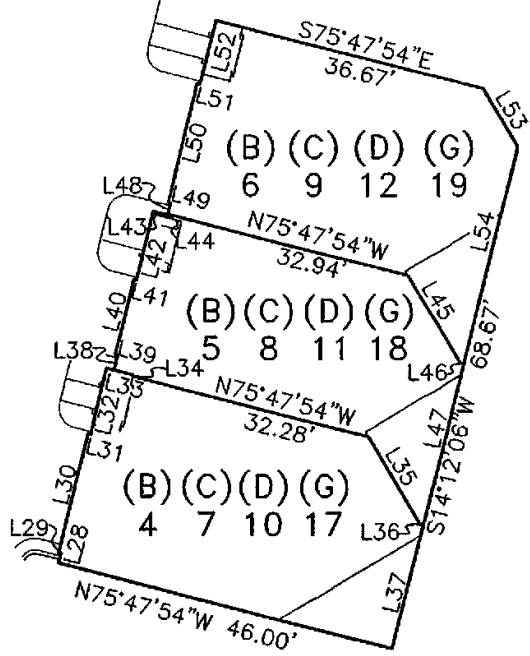
**BUILDING A (UNITS 1, 2 & 3) - "MUST BE BUILT"**

**BUILDING B  
(UNITS 4, 5 & 6) -  
"MUST BE BUILT"**

**BUILDING C  
(UNITS 7, 8 & 9) -  
"MUST BE BUILT"**

**BUILDING D  
(UNITS 10, 11 & 12) -  
"MUST BE BUILT"**

**BUILDING G  
(UNITS 17, 18 & 19) -  
"MUST BE BUILT"**



**"ATTACHMENT 1"**

**THE BLUFFS AT BALCONES CONDOMINIUMS  
BEING 1.926 ACRES OF LAND OUT OF THE  
T.J. CHAMBERS SURVEY IN TRAVIS COUNTY, TEXAS  
AND BEING KNOWN AS LOT 2, BLOCK A,  
NORTHWEST HILLS SECTION ELEVEN, PHASE 2;  
A SUBDIVISION OF RECORD IN BOOK 42, PAGE 7  
OF THE PLAT RECORDS OF TRAVIS COUNTY, TEXAS**

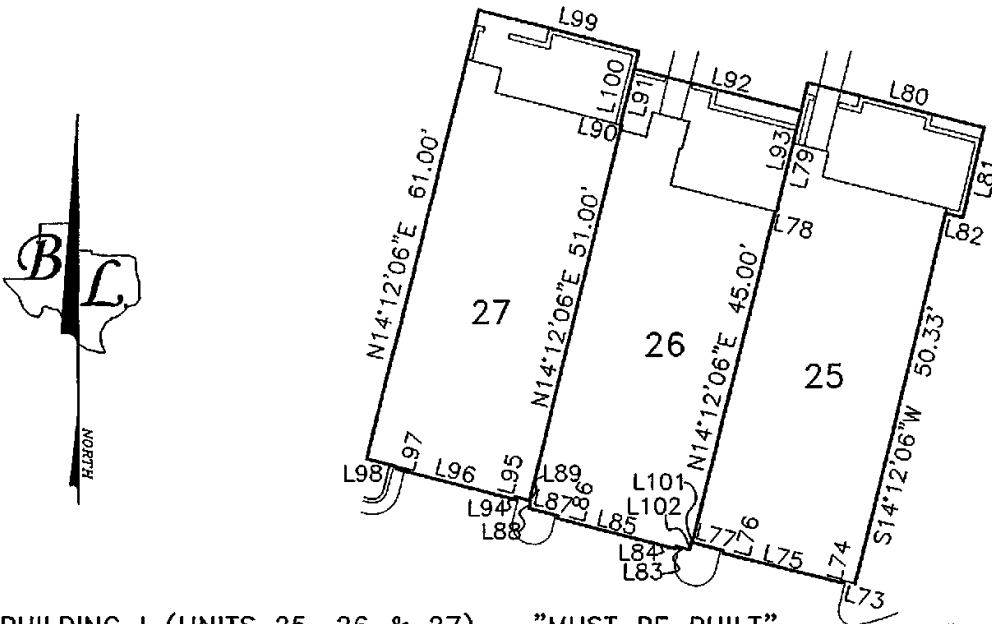
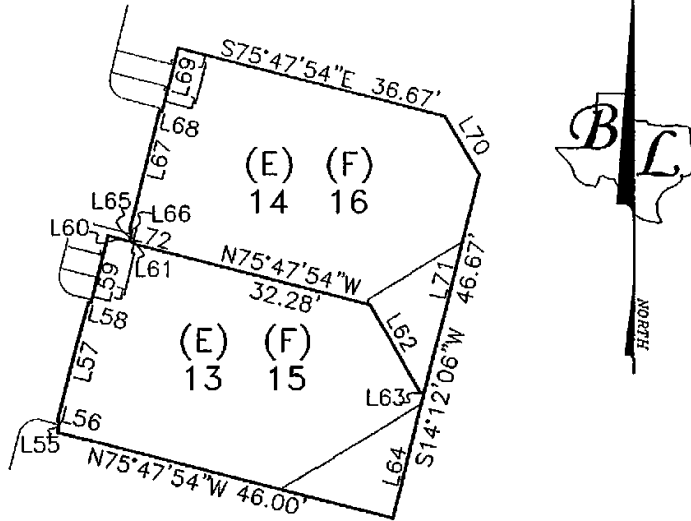
**BASELINE LAND SURVEYORS, INC.**  
PROFESSIONAL LAND SURVEYING SERVICES  
8335 CROSS PARK DRIVE  
AUSTIN, TEXAS 78757  
OFFICE: 512.374.9722 FAX: 512.873.9743  
ron-baseline@austln.rtr.com

File: S:\Projects\Bluffs at Balcones\Draw\Bluffs at Balcones.dwg	SHEET
Job No. _____ Layer State: Condo Regime	
Scale (Hor.): 1"=20'	Scale (Vert.): _____
Date: 04/17/12	Checked By: JSL
Drawn By: RLW	8 of 12

ANNOTATION DETAIL SHEET FOR BUILDINGS E, F, & I

BUILDING E  
(UNITS 13 & 14) -  
"MUST BE BUILT"

BUILDING F  
(UNITS 15 & 16) -  
"MUST BE BUILT"



BUILDING I (UNITS 25, 26 & 27) - "MUST BE BUILT"

"ATTACHMENT 1"

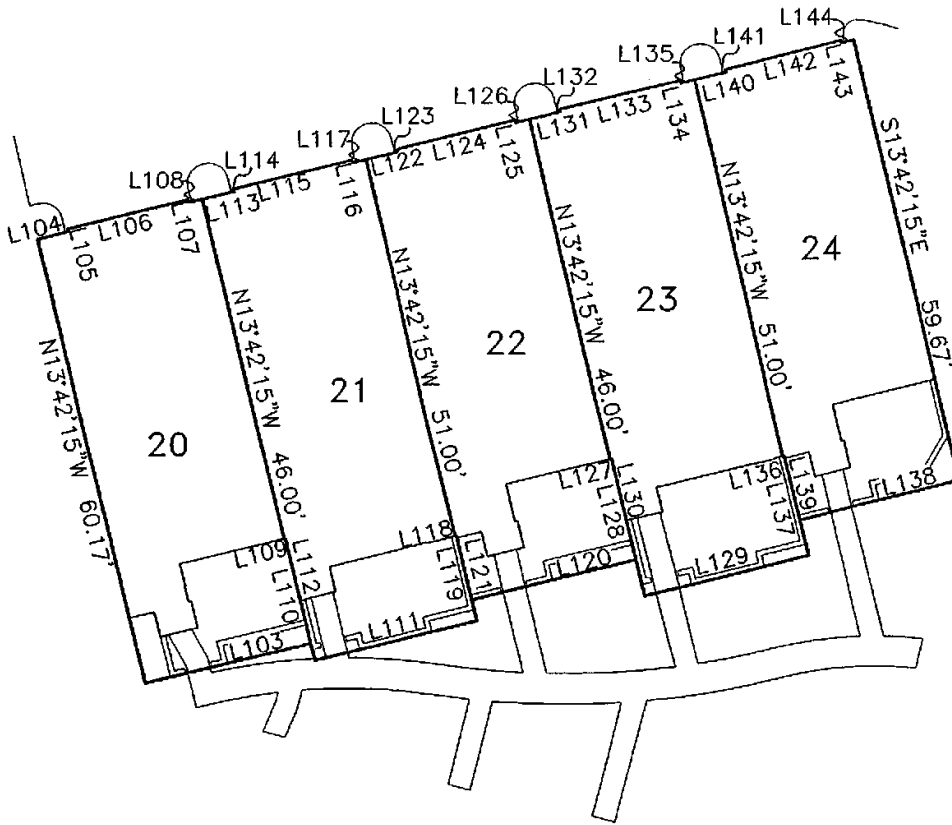
THE BLUFFS AT BALCONES CONDOMINIUMS  
BEING 1.926 ACRES OF LAND OUT OF THE  
T.J. CHAMBERS SURVEY IN TRAVIS COUNTY, TEXAS  
AND BEING KNOWN AS LOT 2, BLOCK A,  
NORTHWEST HILLS SECTION ELEVEN, PHASE 2;  
A SUBDIVISION OF RECORD IN BOOK 42, PAGE 7  
OF THE PLAT RECORDS OF TRAVIS COUNTY, TEXAS

**BASELINE LAND SURVEYORS, INC.**  
PROFESSIONAL LAND SURVEYING SERVICES  
8333 CROSS PARK DRIVE  
AUSTIN, TEXAS 78757  
OFFICE: 512.374.9722 FAX: 512.873.9743  
ron-baseline@ausfln.rr.com

File: S: Projects\Bluffs at Balcones\Dwg\Bluffs at Balcones.dwg	
Job No.	Layer State: Condo Regime
Scale (Hor.): 1"=20'	Scale (Vert.):
Date: 09/15/08	Checked By: JSL Drawn By: RLW

SHEET  
9 of 12

ANNOTATION DETAIL SHEET FOR BUILDING H



BUILDING H (UNITS 20, 21, 22, 23 & 24) - "MUST BE BUILT"

"ATTACHMENT 1"

THE BLUFFS AT BALCONES CONDOMINIUMS  
 BEING 1.926 ACRES OF LAND OUT OF THE  
 T.J. CHAMBERS SURVEY IN TRAVIS COUNTY, TEXAS  
 AND BEING KNOWN AS LOT 2, BLOCK A,  
 NORTHWEST HILLS SECTION ELEVEN, PHASE 2;  
 A SUBDIVISION OF RECORD IN BOOK 42, PAGE 7  
 OF THE PLAT RECORDS OF TRAVIS COUNTY, TEXAS

**BASELINE LAND SURVEYORS, INC.**  
 PROFESSIONAL LAND SURVEYING SERVICES  
 8333 CROSS PARK DRIVE  
 AUSTIN, TEXAS 78757  
 OFFICE: 512.374.9722 FAX: 512.873.9743  
 ron-baseline@ausfln.rr.com

File: S: Projects\Bluffs at Balcones\Draw\Bluffs at Balcones.dwg	Layer State: Condo Regime
Job No.:	Scale (Hor.): 1"=20'
Date: 03/25/10	Scale (Vert.):
Checked By: JSL	Drawn By: RLW

SHEET  
 10 of 12

LINE TABLE		
LINE	BEARING	LENGTH
L1	S75°47'54"E	8.71'
L2	N14°12'06"E	0.35'
L3	S75°47'54"E	16.25'
L4	S14°12'06"W	0.35'
L5	S75°47'54"E	1.54'
L6	S30°47'54"E	13.48'
L7	S14°12'06"W	0.53'
L8	N75°47'54"W	29.70'
L9	N30°47'54"W	8.96'
L10	S75°47'54"E	9.38'
L11	N14°12'06"E	0.35'
L12	S75°47'54"E	10.25'
L13	S14°12'06"W	0.35'
L14	S75°47'54"E	2.04'
L15	S14°12'06"W	2.67'
L16	S75°47'54"E	0.17'
L17	S30°47'54"E	13.48'
L18	S14°12'06"W	0.53'
L19	N75°47'54"W	22.00'
L20	S76°01'49"E	9.05'
L21	N14°12'06"E	0.35'
L22	S75°47'54"E	16.25'
L23	S14°12'06"W	0.35'
L24	S75°47'54"E	1.38'
L25	N75°47'54"W	16.97'
L26	S75°47'54"E	0.17'
L27	N14°12'06"E	2.00'
L28	N14°12'06"E	1.37'
L29	N75°47'54"W	0.35'
L30	N14°12'06"E	16.25'
L31	S75°47'54"E	0.35'
L32	N14°12'06"E	9.04'
L33	S75°47'54"E	3.67'
L34	S14°12'06"W	0.17'
L35	S30°47'54"E	13.48'
L36	S75°47'54"E	0.53'
L37	S14°12'06"W	16.97'
L38	N14°12'06"E	2.04'
L39	N75°47'54"W	0.35'
L40	N14°12'06"E	10.25'
L41	S75°47'54"E	0.35'
L42	N14°12'06"E	9.37'
L43	S75°47'54"E	2.00'
L44	N14°12'06"E	0.17'
L45	S30°47'54"E	13.48'
L46	S75°47'54"E	0.53'
L47	S14°12'06"W	22.00'
L48	N14°12'06"E	1.54'
L49	N75°47'54"W	0.35'
L50	N14°12'06"E	16.25'
L51	S75°47'54"E	0.35'
L52	N14°12'06"E	8.71'
L53	S30°47'54"E	8.96'
L54	S14°12'06"W	29.70'
L55	N14°12'06"E	1.37'
L56	N75°47'54"W	0.35'
L57	N14°12'06"E	16.25'
L58	S75°47'54"E	0.35'
L59	N14°12'06"E	9.04'
L60	S75°47'54"E	3.67'

LINE TABLE		
LINE	BEARING	LENGTH
L61	S14°12'06"W	0.17'
L62	S30°47'54"E	13.48'
L63	S75°47'54"E	0.53'
L64	S14°12'06"W	16.97'
L65	N14°12'06"E	1.37'
L66	N75°47'54"W	0.35'
L67	N14°12'06"E	16.25'
L68	S75°47'54"E	0.35'
L69	N14°12'06"E	8.71'
L70	S30°47'54"E	8.96'
L71	S14°12'06"W	29.70'
L72	N75°47'54"W	0.67'
L73	N75°47'54"W	1.71'
L74	S14°12'06"W	0.35'
L75	N75°47'54"W	16.25'
L76	N14°12'06"E	0.35'
L77	N75°47'54"W	4.21'
L78	S75°47'54"E	0.17'
L79	N14°12'06"E	17.50'
L80	S75°47'54"E	24.33'
L81	S14°12'06"W	12.17'
L82	N75°47'54"W	2.33'
L83	N75°47'54"W	1.71'
L84	S14°12'06"W	0.35'
L85	N75°47'54"W	16.25'
L86	N14°12'06"E	0.35'
L87	N75°47'54"W	4.04'
L88	N14°12'06"E	1.00'
L89	N75°47'54"W	0.17'
L90	N75°47'54"W	0.17'
L91	N14°12'06"E	7.67'
L92	S75°47'54"E	22.67'
L93	S14°12'06"W	13.67'
L94	N75°47'54"W	1.87'
L95	S14°12'06"W	0.35'
L96	N75°47'54"W	16.25'
L97	N14°12'06"E	0.35'
L98	N75°47'54"W	4.04'
L99	S75°47'54"E	22.00'
L100	S14°12'06"W	10.00'
L101	N75°47'54"W	0.17'
L102	S14°12'06"W	1.00'
L103	S76°17'45"W	22.33'
L104	N76°17'45"E	4.04'
L105	N13°42'15"W	0.35'
L106	N76°17'45"E	16.25'
L107	S13°42'15"E	0.35'
L108	N76°17'45"E	1.87'
L109	N76°17'45"E	0.17'
L110	S13°42'15"E	14.17'
L111	S76°17'45"W	22.33'
L112	N13°42'15"W	16.50'
L113	N76°17'45"E	4.21'
L114	N13°42'15"W	0.35'
L115	N76°17'45"E	16.25'
L116	S13°42'15"E	0.35'
L117	N76°17'45"E	1.87'
L118	N76°17'45"E	0.17'
L119	S13°42'15"E	11.50'
L120	S76°17'45"W	22.33'

LINE TABLE		
LINE	BEARING	LENGTH
L121	N13°42'15"W	8.67'
L122	N76°17'45"E	4.21'
L123	N13°42'15"W	0.35'
L124	N76°17'45"E	16.25'
L125	S13°42'15"E	0.35'
L126	N76°17'45"E	1.87'
L127	N76°17'45"E	0.17'
L128	S13°42'15"E	13.67'
L129	S76°17'45"W	22.33'
L130	N13°42'15"W	18.50'
L131	N76°17'45"E	4.21'
L132	N13°42'15"W	0.35'
L133	N76°17'45"E	16.25'
L134	S13°42'15"E	0.35'
L135	N76°17'45"E	1.87'
L136	N76°17'45"E	0.17'
L137	S13°42'15"E	13.50'
L138	S76°17'45"W	22.00'
L139	N13°42'15"W	8.67'
L140	N76°17'45"E	4.21'
L141	N13°42'15"W	0.35'
L142	N76°17'45"E	16.25'
L143	S13°42'15"E	0.35'
L144	N76°17'45"E	1.71'
L145	N21°13'10"E	12.85'
L146	S75°24'10"E	12.82'
L147	S75°24'10"E	12.35'
L148	S14°12'14"W	16.35'
L149	S02°28'17"E	10.45'
L150	S02°25'12"E	10.49'
L151	S75°24'10"E	11.91'
L152	S14°12'14"W	16.38'
L153	S75°24'10"E	11.80'
L154	S76°04'06"E	11.75'
L155	S14°12'17"W	16.35'
L156	S76°04'06"E	11.83'
L157	S02°27'46"E	10.46'
L158	S54°53'41"W	46.35'
L159	N71°42'27"W	43.98'
L160	S02°26'00"E	10.48'
L161	S76°04'06"E	12.15'
L162	S14°12'17"W	16.37'
L163	S76°04'06"E	12.23'
L164	S76°04'06"E	12.56'
L165	S14°12'17"W	16.36'
L166	N60°20'39"E	17.90'
L167	S02°27'18"E	10.46'
L168	S84°49'31"E	39.57'
L169	S25°59'47"E	20.19'
L170	S21°21'12"W	7.95'
L171	S21°21'12"W	26.07'
L172	S21°21'12"W	17.53'
L173	S11°55'17"W	44.94'
L174	S72°41'52"W	59.21'
L175	S66°54'53"W	43.96'
L176	N88°40'23"E	16.09'
L177	S45°01'40"E	58.75'
L178	N14°12'06"E	16.97'
L179	S76°04'06"E	12.88'
L180	S13°55'54"W	16.97'

"ATTACHMENT 1"

THE BLUFFS AT BALCONES CONDOMINIUMS  
BEING 1.926 ACRES OF LAND OUT OF THE  
T.J. CHAMBERS SURVEY IN TRAVIS COUNTY, TEXAS  
AND BEING KNOWN AS LOT 2, BLOCK A,  
NORTHWEST HILLS SECTION ELEVEN, PHASE 2;  
A SUBDIVISION OF RECORD IN BOOK 42, PAGE 7  
OF THE PLAT RECORDS OF TRAVIS COUNTY, TEXAS

**BASELINE LAND SURVEYORS, INC.**  
PROFESSIONAL LAND SURVEYING SERVICES

8335 CROSS PARK DRIVE  
AUSTIN, TEXAS 78757  
OFFICE: 512.374.8722 FAX: 512.873.9743  
ron-baseline@austin.rr.com

File: S:\Projects\Bluffs at Balcones\Draw\Bluffs at Balcones.dwg	SHEET
Job No. _____	
Scale (Hor.): 1"=20'	Scale (Vert.): _____
Date: 10/18/13	Checked By: JSL
Drawn By: RLW	11 of 12



LINE TABLE		
LINE	BEARING	LENGTH
L181	N14°12'06"E	22.00'
L182	S76°04'06"E	12.77'
L183	S13°55'54"W	22.00'
L184	N21°13'10"E	12.85'
L185	S13°55'54"W	41.05'
L186	N14°14'09"E	41.05'
L187	S75°47'54"E	15.50'
L188	N13°37'50"W	25.71'
L189	N16°24'26"W	25.60'
L190	N68°38'48"W	28.75'
L191	N14°12'06"E	11.84'
L192	S76°04'06"E	12.56'
L193	N14°08'25"E	21.97'
L194	S13°55'54"W	21.97'
L195	S76°04'06"E	12.48'
L196	S13°55'54"W	22.00'
L197	N14°12'06"E	22.00'
L198	S76°04'06"E	12.37'
L199	S13°55'54"W	41.07'
L200	N14°14'09"E	41.07'
L201	S76°04'06"E	12.15'
L202	N14°08'25"E	21.97'
L203	S13°55'54"W	21.97'
L204	S13°55'54"W	41.05'
L205	N14°14'09"E	41.05'
L206	S76°04'06"E	12.07'
L207	S13°55'54"W	22.00'
L208	N14°12'06"E	22.00'
L209	S76°04'06"E	11.97'
L210	S76°04'06"E	11.75'
L211	N14°08'25"E	21.97'
L212	S13°55'54"W	21.97'
L213	N02°27'18"W	10.46'
L214	N02°26'00"W	10.48'
L215	S71°42'27"E	43.98'
L216	N67°06'05"E	41.65'
L217	N14°09'16"E	41.08'
L218	S75°24'10"E	11.91'
L219	S14°35'50"W	34.37'
L220	S76°04'06"E	11.67'
L221	S14°35'50"W	21.97'
L222	S13°55'54"W	6.57'
L223	N14°17'30"E	21.97'
L224	S75°24'10"E	12.03'
L225	S86°01'31"E	75.38'
L226	S58°58'15"E	60.75'
L227	N14°14'07"E	41.04'
L228	S76°04'06"E	12.35'
L229	S14°40'40"W	41.19'
L230	N14°08'25"E	21.97'
L231	S76°04'06"E	12.47'
L232	S14°26'45"W	21.97'
L233	N02°27'46"W	10.46'
L234	N02°25'12"W	10.49'
L235	N68°36'31"W	67.69'
L236	N68°36'31"W	58.54'
L237	S02°28'17"E	10.45'
L238	N14°12'06"E	31.49'
L239	S75°47'54"E	13.64'
L240	S14°12'06"W	10.00'

LINE TABLE		
LINE	BEARING	LENGTH
L241	S30°47'54"E	8.96'
L242	S75°47'54"E	29.70'
L243	S14°12'06"W	21.39'
L244	N68°38'48"W	50.06'
L245	S75°47'54"E	22.00'
L246	S14°12'06"W	24.15'
L247	N68°38'48"W	22.17'
L248	S75°47'54"E	16.97'
L249	N14°12'06"E	15.50'
L250	S75°47'54"E	5.00'
L251	S14°12'06"W	27.18'
L252	N75°47'54"W	7.29'
L253	S14°12'06"W	14.31'
L254	N68°38'48"W	14.80'
L255	S20°41'07"E	91.39'
L256	S11°55'17"W	44.94'
L257	S00°37'25"W	43.11'
L258	S79°58'38"W	39.56'
L259	N14°12'06"E	22.00'
L260	S75°24'10"E	12.62'
L261	S14°35'50"W	21.85'
L262	N14°12'06"E	20.53'
L263	S75°24'10"E	12.76'
L264	S14°35'50"W	20.53'

"ATTACHMENT 1"

THE BLUFFS AT BALCONES CONDOMINIUMS  
 BEING 1.926 ACRES OF LAND OUT OF THE  
 T.J. CHAMBERS SURVEY IN TRAVIS COUNTY, TEXAS  
 AND BEING KNOWN AS LOT 2, BLOCK A,  
 NORTHWEST HILLS SECTION ELEVEN, PHASE 2;  
 A SUBDIVISION OF RECORD IN BOOK 42, PAGE 7  
 OF THE PLAT RECORDS OF TRAVIS COUNTY, TEXAS

**BASELINE LAND SURVEYORS, INC.**  
 PROFESSIONAL LAND SURVEYING SERVICES

8333 CROSS PARK DRIVE  
 AUSTIN, TEXAS 78757  
 OFFICE: 512.374.9722 FAX: 512.873.9743  
 ron-baseline@austin.tx.com

File: S:\Projects\Bluffs at Balcones\Draw\Bluffs at Balcones.dwg	Layer State: Condo Regime	SHEET 12 of 12
Job No.	Scale (Hor.): 1"=20'	
Date: 10/18/13	Checked By: JSL	



**FILED AND RECORDED  
OFFICIAL PUBLIC RECORDS**

*Dana Debeauvoir*

DANA DEBEAUVOIR, COUNTY CLERK  
TRAVIS COUNTY, TEXAS

October 23 2013 04:14 PM

FEE: \$ 94.00 2013193466