



LOCAL AREA TRAFFIC MANAGEMENT PROGRAM (LATM)

AUSTIN TRANSPORTATION DEPARTMENT

Mario Porras, E.I.T.
Program Administrator

LATM

INTRODUCTION

Established in 2012 as a citizen request based process to identify individual high speed locations.

Key components for eligibility

- *Requestor*
- *85th percentile speed criteria*
- *Crash data*

Ranking for funding

- *Top ranking requests get funded based on 12 funding criteria*
- *Highest weighed ranking criteria is volume of speeding vehicles egregiously speeding.*



LESSONS LEARNED

- *Qualification and Design based on Street Context
(Residential Streets vs. Collectors or Minor Arterials)*

- *Neighborhood Outreach
(Informational Signs, Neighborhood Association Notice,
Notification of individual Council Members)*

- *Cooperation from Neighborhood Associations*

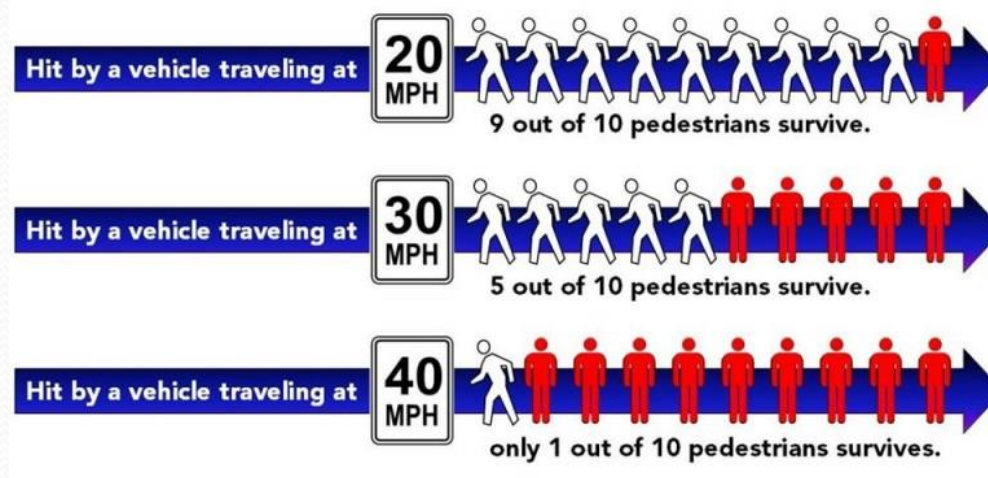


Local Area Traffic Management (LATM)

Program Objective

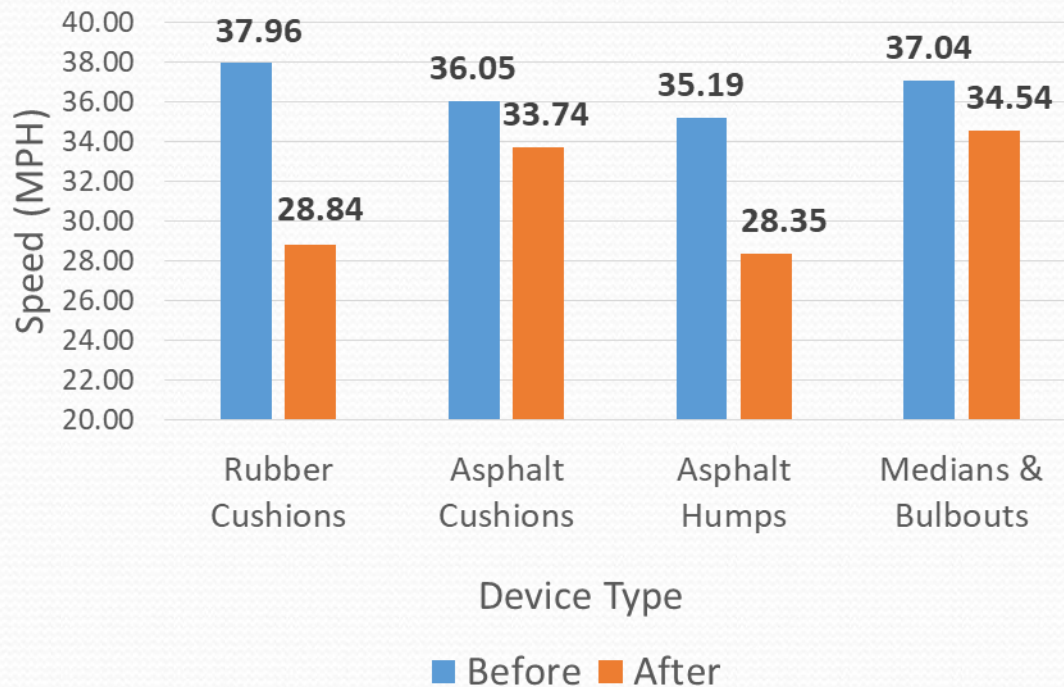
Purpose and Intent

To provide for the consideration of modifying existing roadways to mitigate adverse impacts from existing motor vehicle traffic within a defined area, through the design and implementation of geometric street features or traffic control devices.



CHOOSING ALTERNATIVES

Weighted 85th Percentile Speeds



85ths Before and Reduction

Type	Before	Reduction (mph)
Rubber Cushions	37.96	9.13
Asphalt Cushions	36.05	2.31
Asphalt Humps	35.19	6.84
Medians & Bulbouts	37.04	2.51



SPEED CONTROL OPTIONS

Most effective roadway modifications

- *Vertical Deflection*



SPEED CONTROL OPTIONS

Least invasive roadway modifications

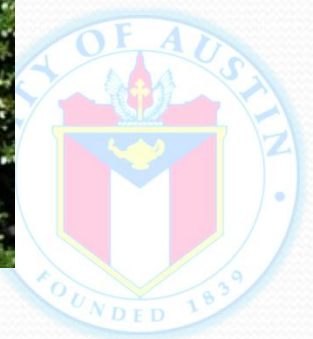
- *Horizontal Deflection*



SPEED CONTROL OPTIONS

Signage

- *Signs, Striping*
- *Dynamic Speed Display Device*



Mesa Drive

6103 Mesa Drive (Northbound)		
Year	2016 (September)	2018 (February)
Volume (vpd)	3091	2449
85th Percentile Speed	37.7	38.7
Vehicles over 35 mph	1253	1134

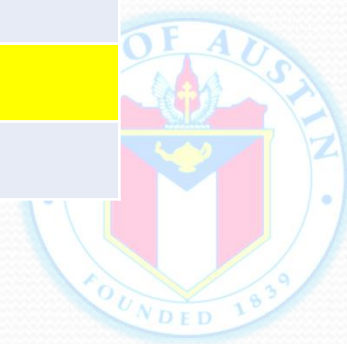
6103 Mesa Drive (Southbound)		
Year	2016 (September)	2018 (February)
Volume (vpd)	2694	2273
85th Percentile Speed	39.2	38.2
Vehicles over 35 mph	1483	949



Hart Lane

7600 Block Hart Lane (Northbound)		
Year	2016 (May)	2018 (February)
Volume (vpd)	2272	2278
85th Percentile Speed	38	38.4
Vehicles over 35 mph	797	906

7600 Block Hart Lane (Southbound)		
Year	2016 (May)	2018 (February)
Volume (vpd)	2234	2398
85th Percentile Speed	37.8	38.1
Vehicles over 35 mph	749	912



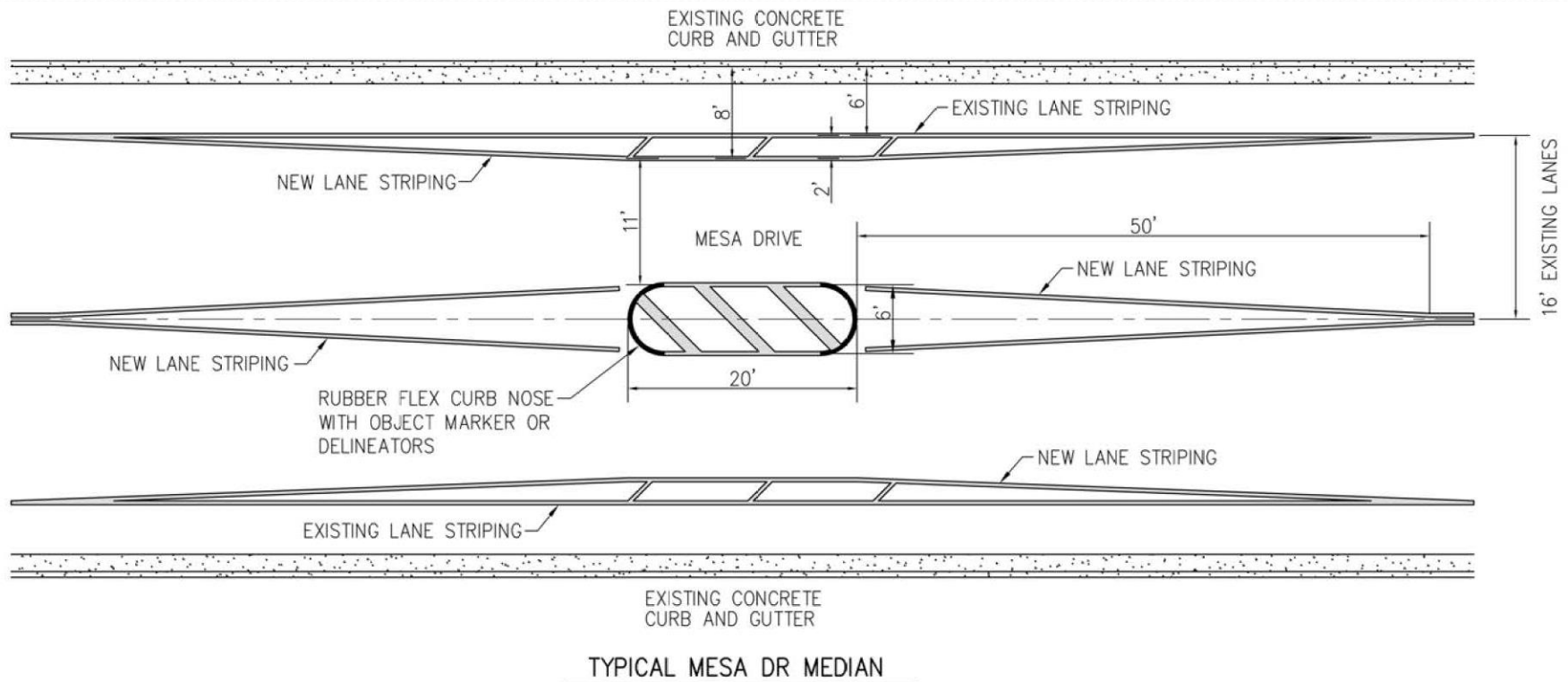
Mountainclimb Drive

6000 Block Mountainclimb (Northbound)		
Year	2016 (May)	2018 (February)
Volume (vpd)	770	814
85th Percentile Speed	35.5	34.2
Vehicles over 35 mph	139	104

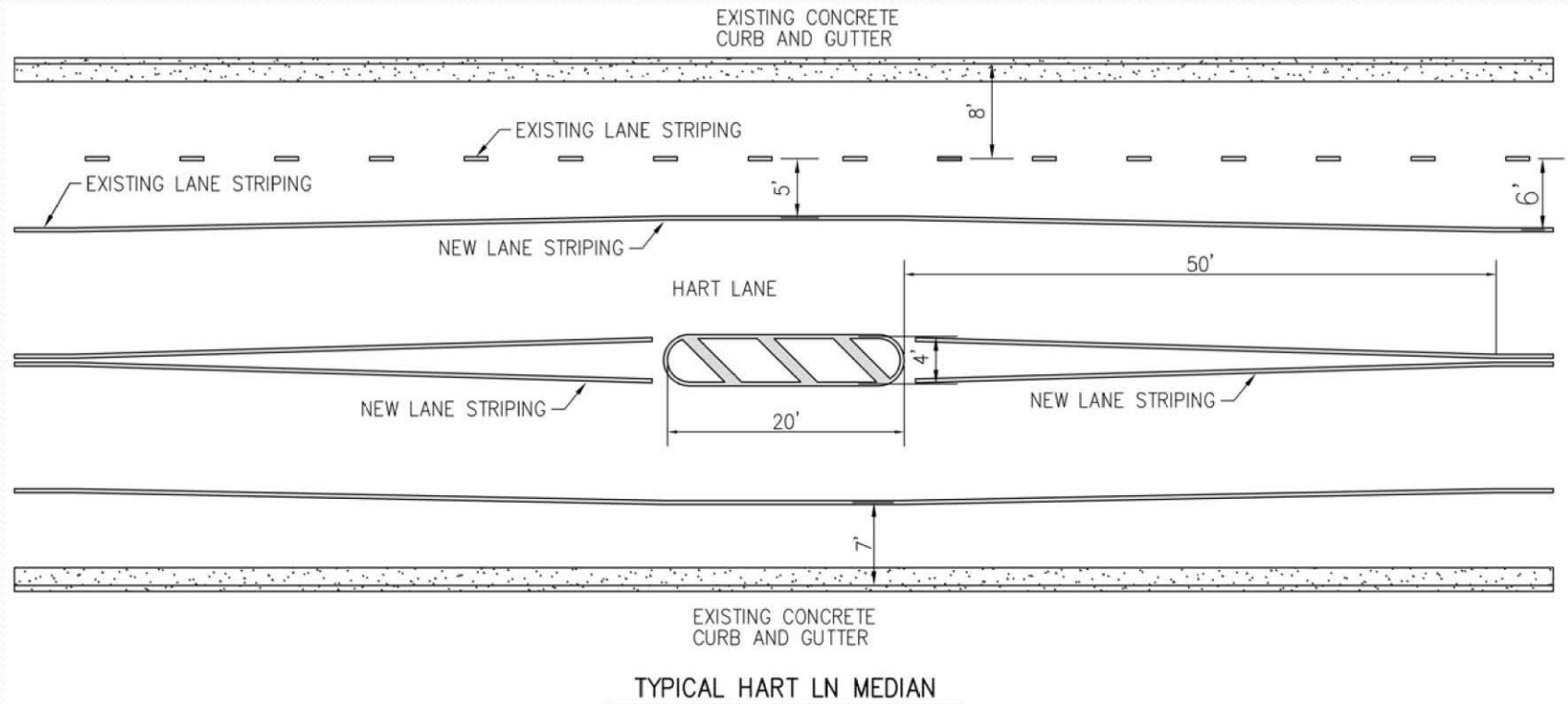
6000 Block Mountainclimb (Southbound)		
Year	2016 (May)	2018 (February)
Volume (vpd)	601	691
85th Percentile Speed	37.7	36.3
Vehicles over 35 mph	202	165



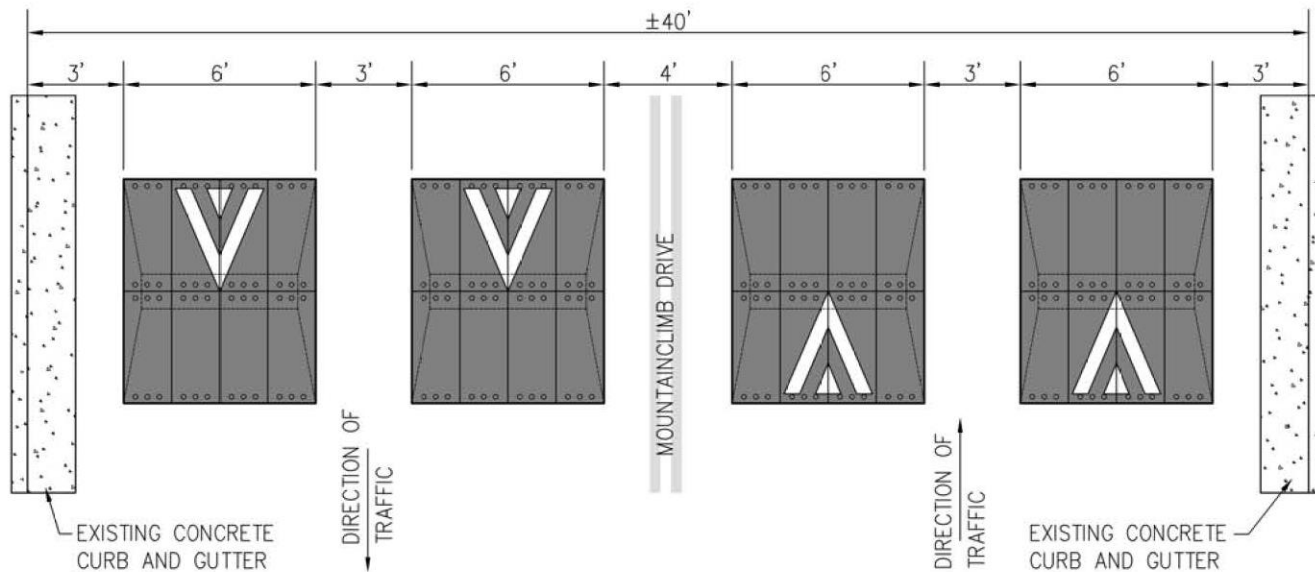
Mitigation Option for Mesa Drive



Mitigation Option for Hart Lane



Mitigation Plan for Mountainclimb Drive



DETAIL— CUSHION SPACING

SCALE: 1"=6'



QUESTIONS?

LATM Website: www.austintexas.gov/latm

Contact:

Mario Porras, E.I.T.

Mario.porras@austintexas.gov

512 974.7656

In person:

3701 Lake Austin Boulevard

Mail:

P.O. Box 1088

Austin, TX 78767

