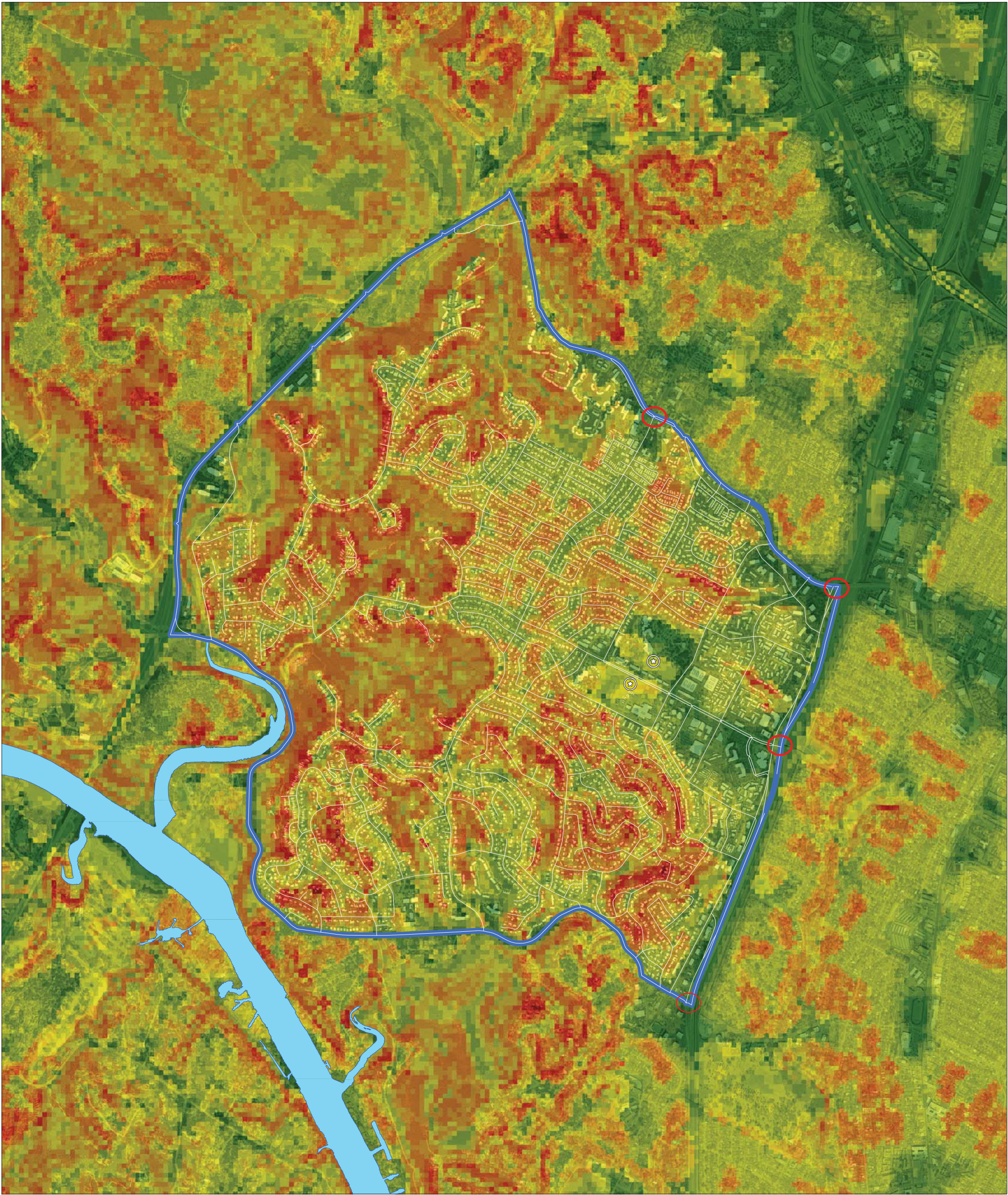
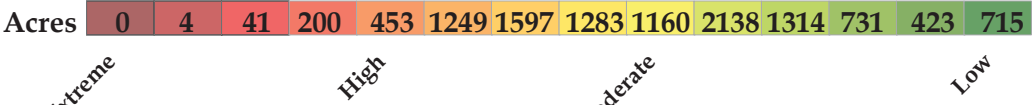


NWACA Wildland Urban Interface Response Index Map



Wildland Urban Interface Response Index for NWACA Plus 1 Mile Buffer



The WUI response index is a synthesis of three critical components of fire behavior in the wildland-urban interface: Vegetation hazard, which was developed from Lidar data and is a derivative of vegetation density, slope, and structure density. The WUI response index is meant to display potential hazard to an area under worst case scenario environmental conditions.

NWACA Boundary Temporary Evacuation Zone Community Exit Points



Map Disclaimer
The property boundaries and easements are for informational purposes and may not have been prepared for or be suitable for legal, engineering, or surveying purposes. Unless otherwise noted on the drawing they do not represent an on-the-ground survey and represent only the approximate relative location. The boundaries have been produced by the Austin Fire Department Wildfire Division for the sole purpose of geographic reference. No warranty is made by the City of Austin regarding specific accuracy or completeness.

AFD Wildfire Division | Nate Casebeer | May 2017