

# Demographic Snapshot

# 2040 Forecast

## DTI\* 2040 Population and Employment Forecast

by ZIP CODE(1)

		2015	2020	2040		2020	2040		
	2010	Population	Population	Population		2010	Employment	Employment	Jurisdictional
ZIP Code	Population	Estimate	Forecast	Forecast	Employment	Forecast	Forecast		Split(2)
78731	25,708	26,415	27,130	32,160	16,819	20,489	28,076		1.000
78756	7,896	9,080	10,183	14,470	17,391	21,287	29,339		1.000
78757	21,730	24,073	25,847	33,925	16,406	22,588	37,842		1.000
78759	36,244	37,595	39,179	48,739	35,866	40,816	54,610		1.000
	91,578	97,163	102,339	129,294	86,482	105,180	149,867		

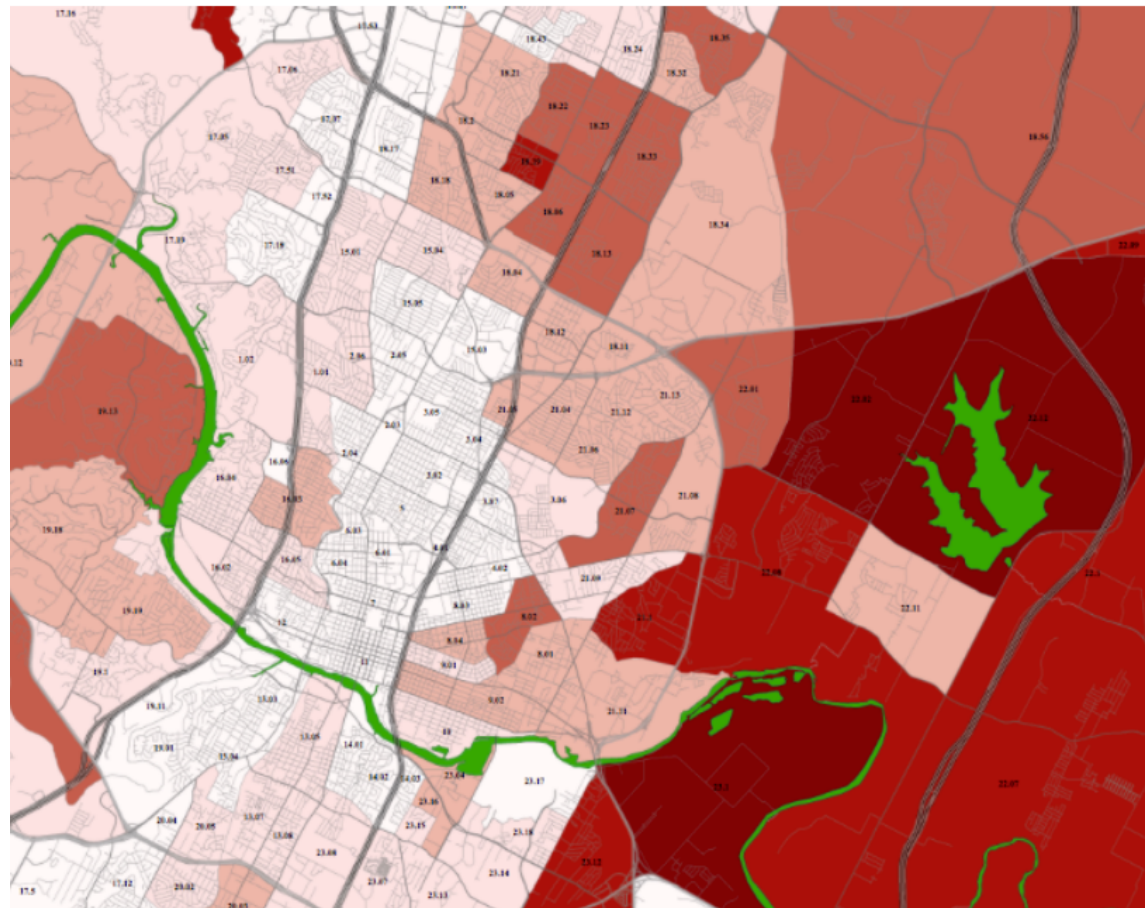
### NOTES

(1) The study area is made up of ZIP Codes but only the portion of a ZIP Code that overlaps with either the City of Austin corporate limits or its Extra-Territorial Jurisdiction. The City's combined jurisdictional area is used as a cookie cutter to select from the the full set of ZIP Codes within central Texas.

(2) Jurisdictional Split indicates how much of the whole ZIP Code's territory falls within the City's combined jurisdiction (City limits plus ETJ).

\* DTI - Delphi, Trends, and Imagine Austin - collaboration of City Planning Office and Austin Water

# 2011 Hhds with Kids



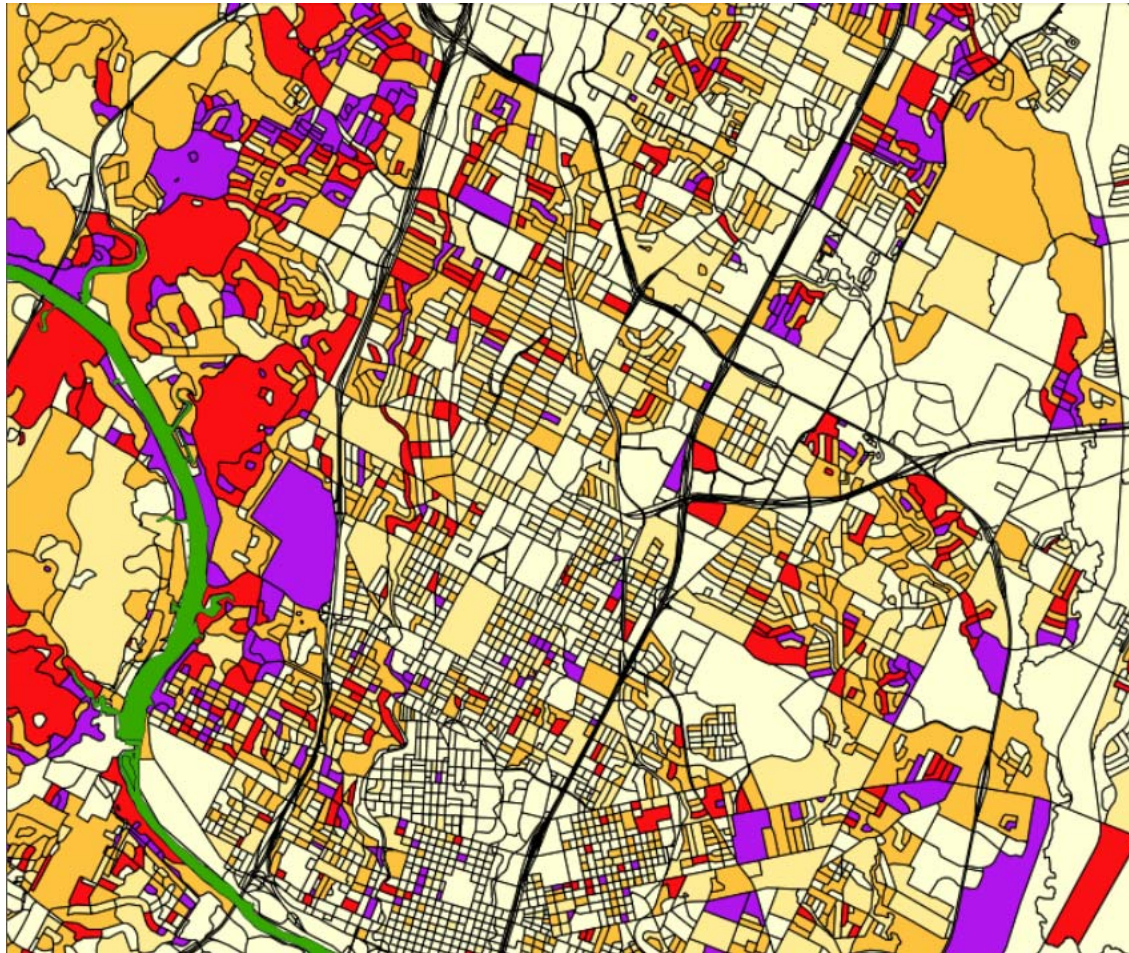
## concentrations

### Urbanized Austin 2011

#### Percentage of Total Households from Households with Children

- Less than 20%
- 20% to 30%
- 30% to 40%
- 40% to 50%
- 50% to 60%
- 60% Plus






# 2010 Seniors



## Age 65--74 Population Concentrations

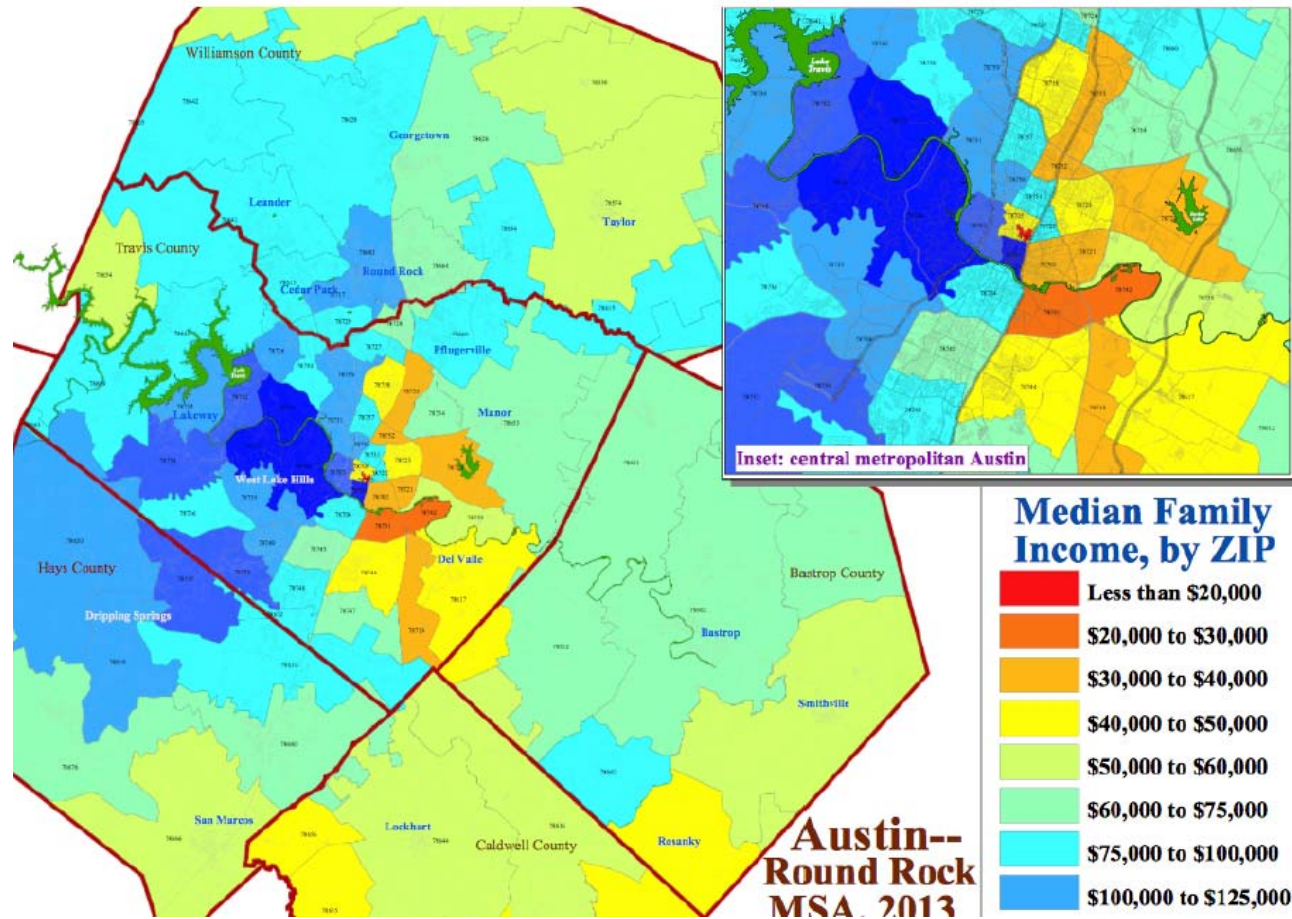
Austin, Texas  
Census 2010 Data

### Percentage of Total Population Age 65 to 74

-  Less than 2.5%
-  2.5% to 5%
-  5% to 10%
-  10% to 15%
-  15% Plus



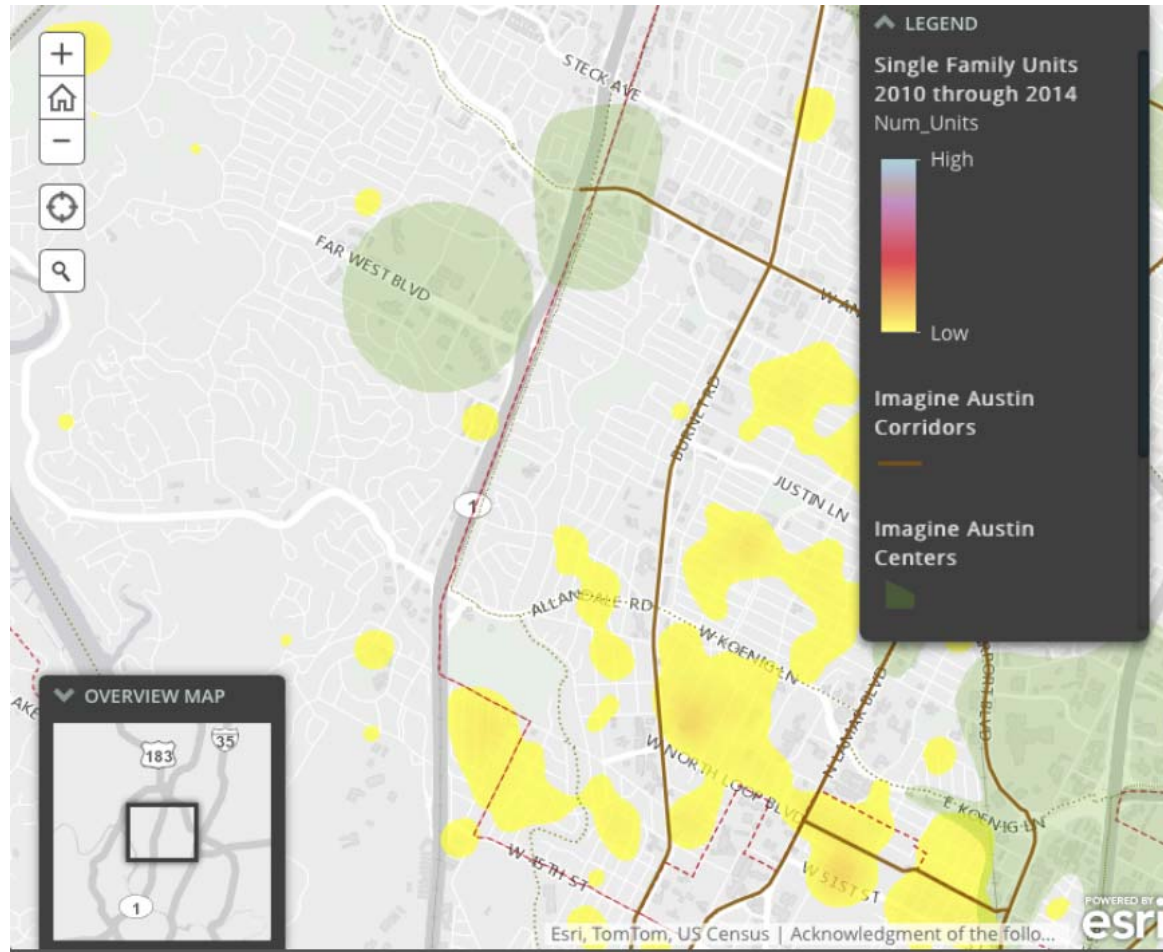
# 2013 Median Family Income



# 2010-14 New Residential Units



# 2010-14 New SF Units



# 2010-14 New MF Units





# 2010-14 Residential Demolitions

