



LEGEND

- Neighborhood Park **2.37 AC**
- Heritage Park **0.45 AC**
- Heritage Trail **0.44 AC**
(Measured 20 ft from R.O.W.)
- 10 ft Wide Paved Heritage Trail
- Clearly Marked Pedestrian Crossing at Street and Vehicular Drives
- Existing Specimen Tree

Mapping Resource: Base information provided by City of Austin GIS and ArcGIS. Contour information provided by Bury.

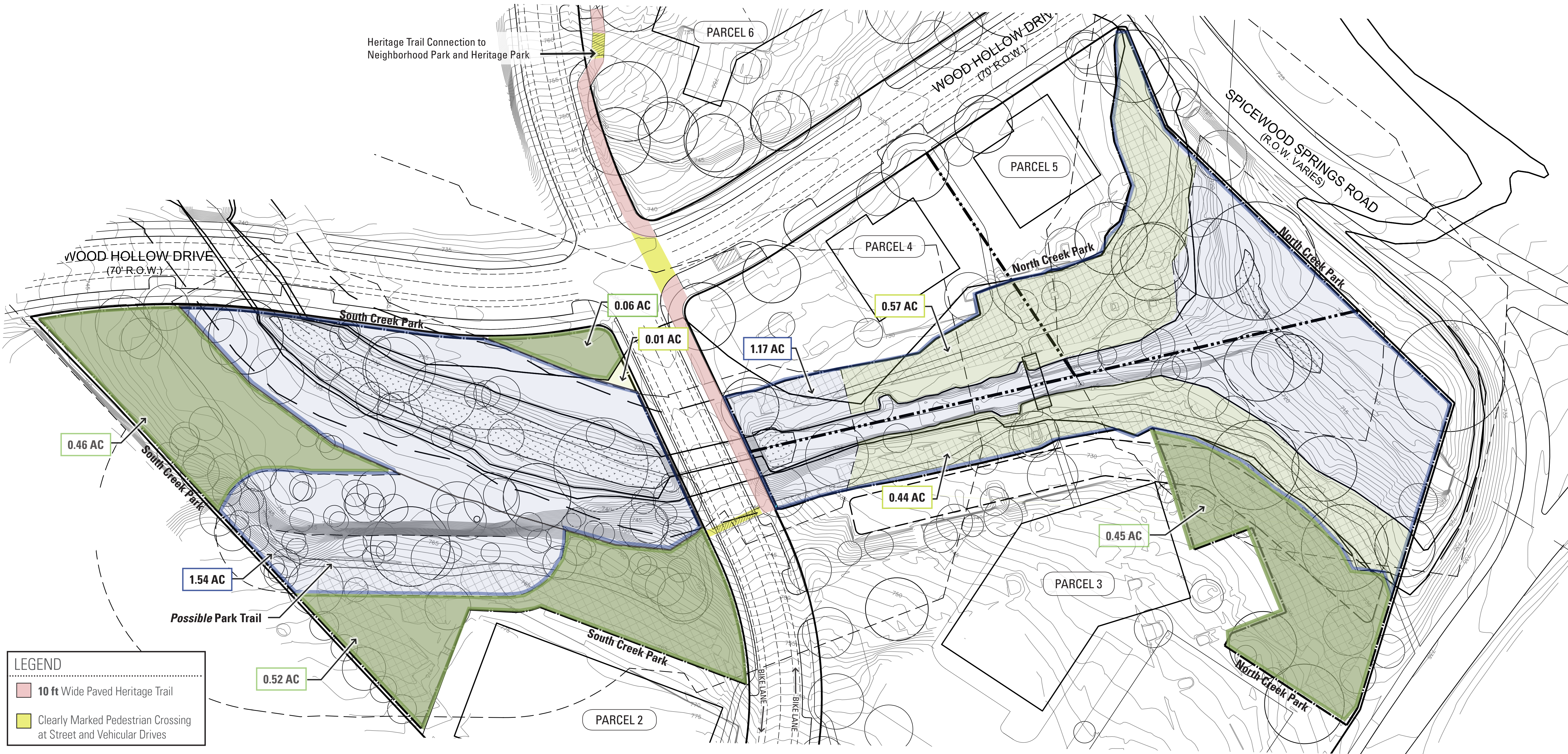


AUSTIN OAKS / PARKLAND DEDICATION - SHEET 1

Austin, Texas 7 July 2016

This work is preliminary and based on limited information, it is a product of TBG Partners executed for demonstration purposes only and may not be copied or transmitted without the approval of TBG.





LEGEND

- 10 ft Wide Paved Heritage Trail
- Clearly Marked Pedestrian Crossing at Street and Vehicular Drives

South Creek Park - South of Executive Center Drive

| | |
|----------------|---|
| 1.54 AC | Open Space Within 25 Yr. Floodplain or 50 ft CEF Setback |
| 0.01 AC | Open Space Outside of 25 Yr. Floodplain and 50 ft CEF Setback but Inside 100 Yr. Floodplain |
| 1.04 AC | Open Space Outside of 100 Yr. Floodplain and 50 ft CEF Setback |
| 2.59 AC | Total Open Space (South of Executive Center Drive) |

North Creek Park - North of Executive Center Drive

| | |
|----------------|---|
| 1.17 AC | Open Space Within 25 Yr. Floodplain or 50 ft CEF Setback |
| 1.01 AC | Open Space Outside of 25 Yr. Floodplain and 50 ft CEF Setback but Inside 100 Yr. Floodplain |
| 0.45 AC | Open Space Outside of 100 Yr. Floodplain and 50 ft CEF Setback |
| 2.63 AC | Total Open Space (North of Executive Center Drive) |

Parkland Dedication Credit for North and South Creek Parks

| | |
|----------------|---|
| 0 AC | Open Space Within 25 Yr. Floodplain or 50 ft CEF Setback (0% Credit) |
| 0.51 AC | Open Space Outside of 25 Yr. Floodplain and 50 ft CEF Setback but Within 100 Yr. Floodplain (50% Credit) |
| 1.49 AC | Open Space Outside of 100 Yr. Floodplain and 50 ft CEF Setback (100% Credit) |
| 2.00 AC | Total Parkland Dedication – Creek Park |



AUSTIN OAKS / PARKLAND DEDICATION - SHEET 2

Austin, Texas 7 July 2016

This work is preliminary and based on limited information, it is a product of TBG Partners executed for demonstration purposes only and may not be copied or transmitted without the approval of TBG.

