

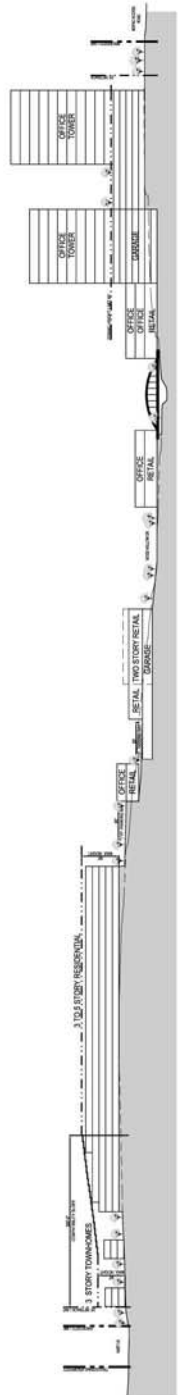


MASTER PLAN

64 HERITAGE TREE CLUSTERS ON SITE
 18 HERITAGE TREE CLUSTERS RELOCATED (DASHED RED)

AUSTIN OAKS MASTER PLAN PROGRAM

Block	Area	Program	Parking Required	Parking Provided	Program Totals
A	4.19 Acres	Multifamily 255 Units	383 Spaces	380 Spaces	Multifamily 575 Units
B	3.88 Acres	Two Story Retailer 34,000 sf Retail 24,500 sf Office 14,000 sf	339 Spaces	340 Spaces	Retail 75,700 sf
C	6.12 Acres	Restaurant 51,200 sf Office Tower 300,000 sf	1,311 Spaces	1,314 Spaces	Restaurant 10,400 sf
D	2.79 Acres	Office Tower 311,300 sf	1,038 Spaces	1,040 Spaces	Two Story Retailer 34,000 sf
E	4.83 Acres	Office Tower 112,800 sf	378 Spaces	380 Spaces	Total Retail 120,100 sf
F	3.73 Acres	Office Tower 140,000 sf Restaurant 2,400 sf	491 Spaces	500 Spaces	Office 878,100 sf
G	6.07 Acres	Multifamily 320 Units	480 Spaces	485 Spaces	
TOTAL	31.39 Acres		4,417 Spaces	4,448 Spaces	



LONGITUDINAL SECTION

SITE PLAN

AUSTIN OAKS | AUSTIN, TEXAS
 DA14003 | 02/27/14

SCALE = 1/200
 2001 Bryan Street • Suite 3100 • Dallas, TX 75201 • Tel: 214.959.5311

